

# North Bay Watershed Association

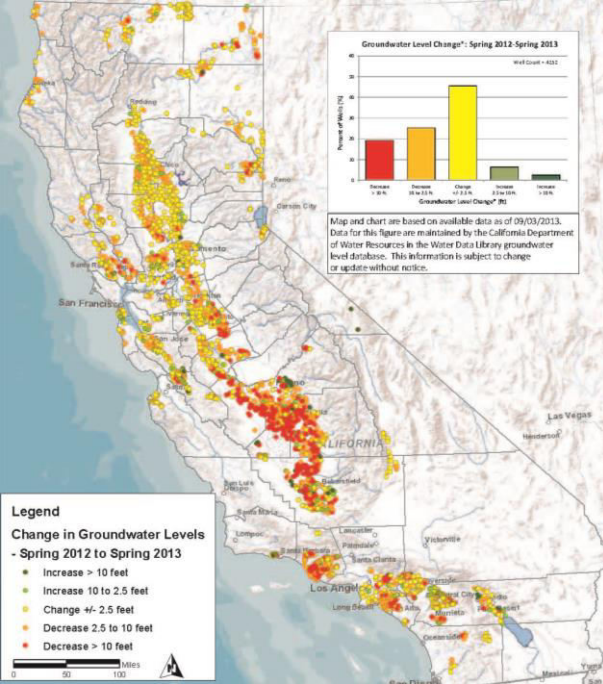
## Sustainable Groundwater Management Program

### DWR Progress Update

April 21, 2016

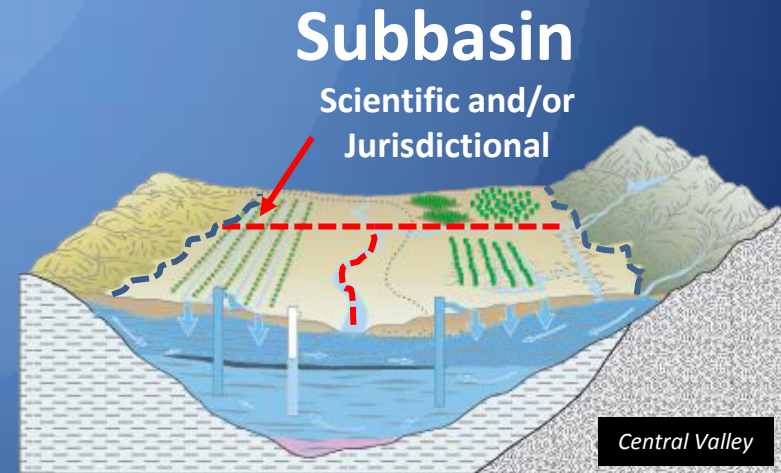
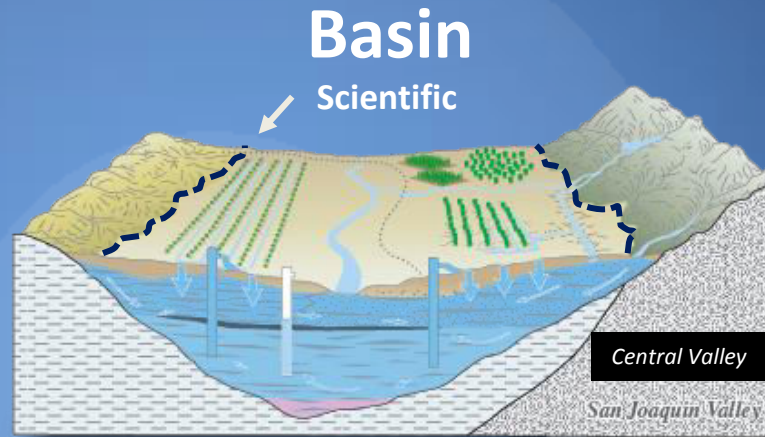
David Gutierrez

CA Department of Water Resources



# Applicability

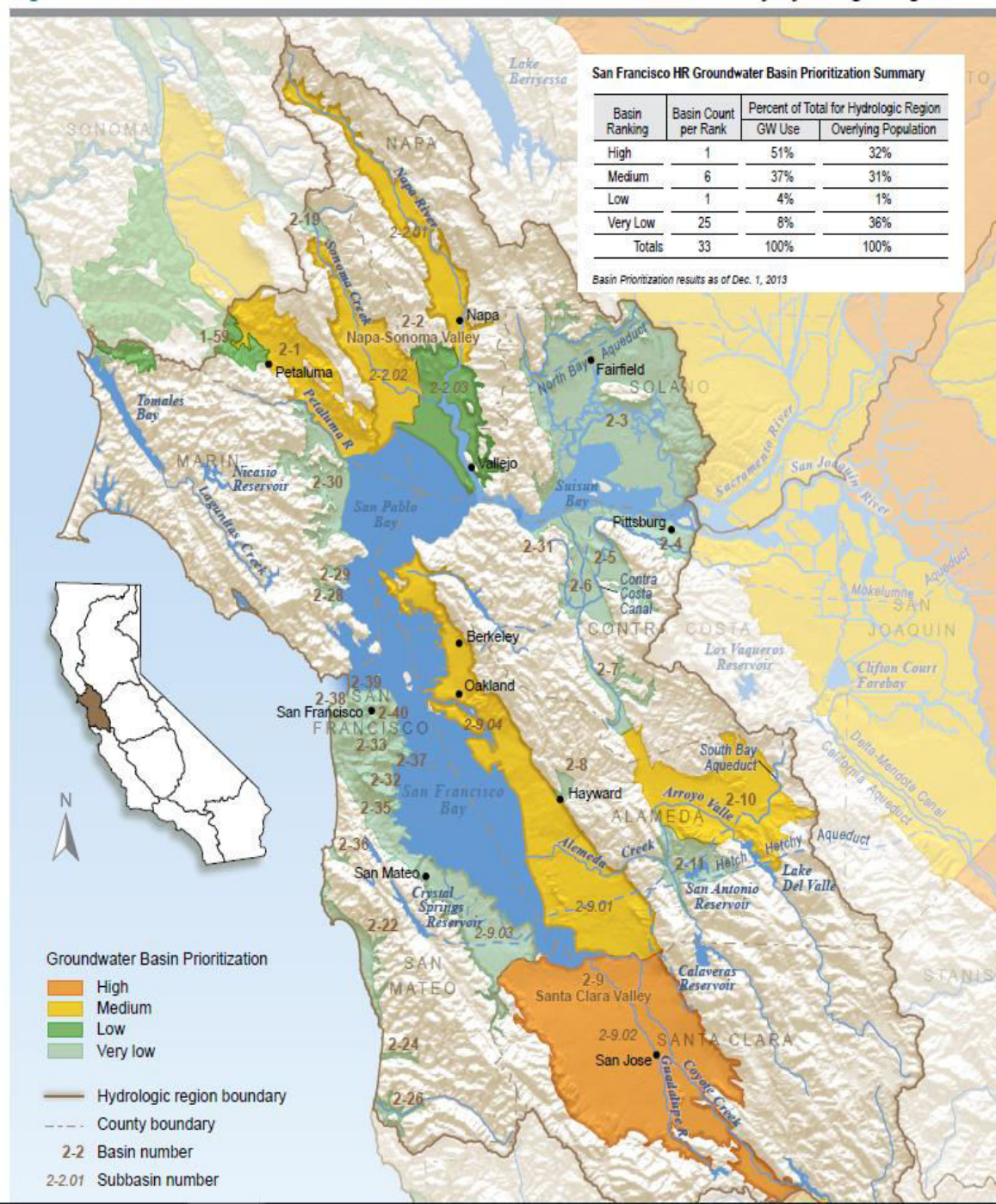
➤ 515 Groundwater Basins and Subbasins



# Basin Prioritization

- Requires GW sustainability plans in high- and medium-priority basins
- Optional for low and very low priority basins
- Does not require adjudicated basins

Figure SFB-8 CASGEM Groundwater Basin Prioritization for the San Francisco Bay Hydrologic Region



# *Groundwater Sustainability*



*Undesirable Results:  
Significant and unreasonable...*

Lowering of  
Groundwater  
Levels

Reduction of  
Groundwater  
Storage

Seawater  
Intrusion

Water Quality  
Degradation

Land  
Subsidence

Depletions of  
Surface Water

# SGMA: What Does it Really Mean?

**Sustainable**



Requires focus on outcomes that support sustainability

**Groundwater**



Requires direct connection between land use and water use

**Management**



Requires new governance and more comprehensive water budgets

**Act**



Requires us to become smarter at working within complex systems

# SGMA Milestones for Success

## Groundwater Sustainability Agencies

- Formation by June 30, 2017
- Only local agencies can be GSAs

## Groundwater Sustainability Plans

- January 31, 2020 for critically overdrafted basins
- January 31, 2022 for all other high and medium priority basins
- Multiple GSPs in a basin must coordinate

## Groundwater Sustainability

- 20-year implementation period
- 50-year planning horizon

## GSA Interactive Map

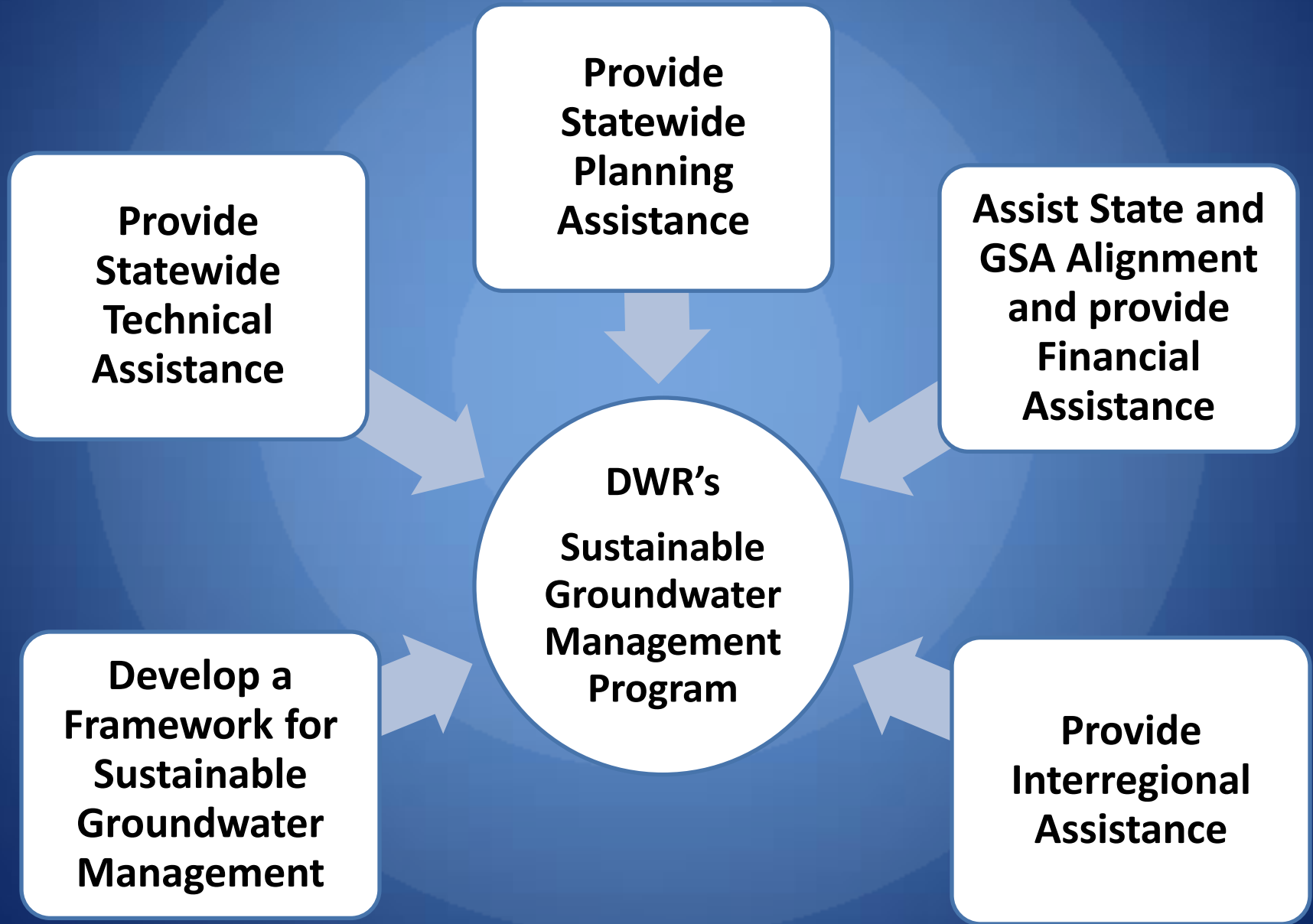
This interactive map shows the location of local agencies that have elected to become Groundwater Sustainability Agencies (GSAs). The boundaries of the GSAs are based on information submitted to DWR by those local agencies. While DWR makes every effort to provide accurate information, DWR has not reviewed the GSA boundary information contained in this map and makes no warranties as to the suitability of this map for any particular purpose. Where multiple local agencies have claimed the same portion of a groundwater basin, the areas of overlap are indicated by a darker color within the GSA boundaries.

In addition to GSA boundaries, the interactive map application shows the following: (1) Bulletin 118-2003 groundwater basins; (2) CASGEM basin prioritization; (3) adjudicated areas listed in Water Code § 10720.8 (full list available soon); and (4) local agencies listed in Water Code § 10723(c) (available soon).

If you have questions related to GSAs or have comments related to the interactive map please contact Mark Nordberg at [Mark.Nordberg@water.ca.gov](mailto:Mark.Nordberg@water.ca.gov). The GSA Interactive Map was last updated on August 10th, 2015.



# DWR's Sustainable Groundwater Management Program



# The “Backstop” State Board Intervention

After	Intervention Trigger
June 30, 2017	Areas without a GSA begin reporting well locations and extraction data to SWRCB; can begin probationary basin designation 180 days later.
Jan. 31, 2020	Can begin probationary basin designation in critically overdrafted basins with no GSP or where DWR finds the GSP is inadequate
Jan. 31, 2022	Can begin probationary basin designation in other high/medium priority basins without a GSP or where DWR finds the GSP is inadequate
Jan. 31, 2025	Probationary basin designations where DWR finds GSP is inadequate and significant depletions of interconnected surface waters

**In all triggering events, intervention is the result of failure by locals to create a GSA or adopt and implement a GSP**

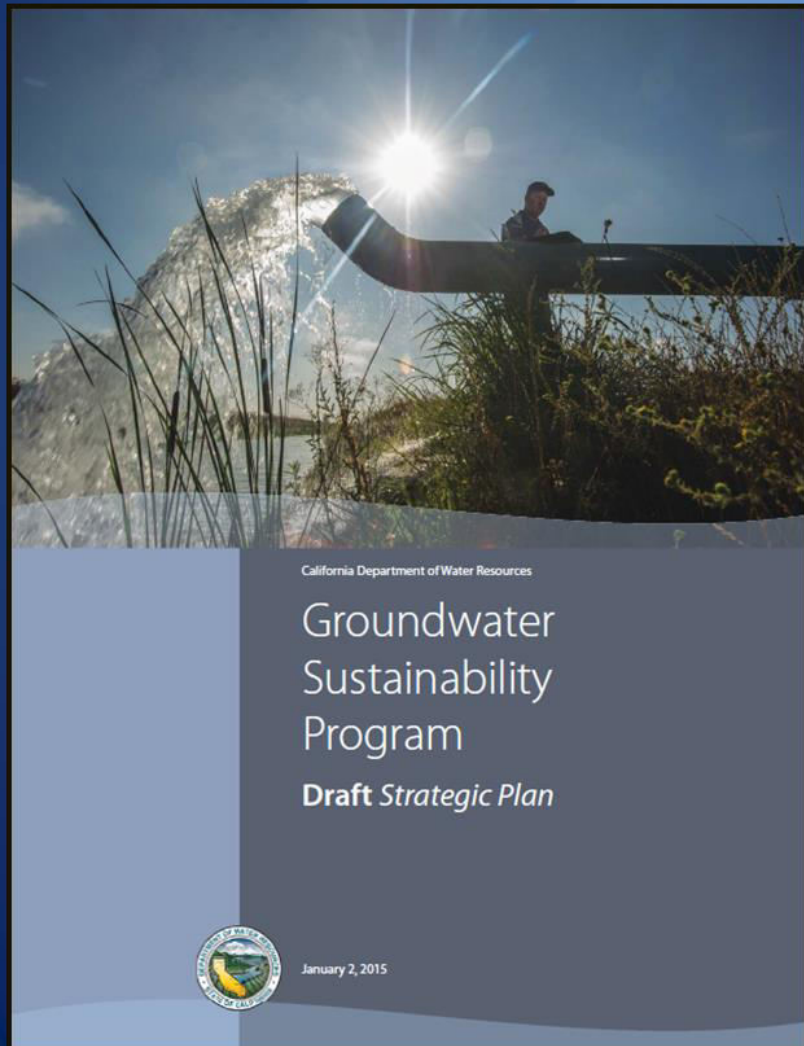


# DWR's Implementation of SGMA

## SUSTAINABLE GROUNDWATER MANAGEMENT (SGM) PROGRAM

- Describes DWR's roles and responsibilities
- Outlines actions from the California Water Action Plan
- Presents DWR's groundwater sustainability goals, objectives, and actions

<http://water.ca.gov/groundwater/sgm/index.cfm>



# Interagency Website DWR Website SWRCB Website

Communication & Outreach Tools



## California Groundwater

HOME ABOUT GROUNDWATER LEGISLATION TIMELINE COMPLIANCE MAP

## Sustainable Groundwater Management



For the first time in California history, the Sustainable Groundwater Management Act (SGMA) requires all groundwater basins to adopt groundwater management plans that are designed to ensure a sufficient and reliable water supply regardless of weather patterns. California's groundwater supply, and sustainable groundwater management, is the focus of the new Sustainable Groundwater website which offers links and news from

SGMA Toolbox

## SGM Sustainable Groundwater Management

### Introduction

The Department of Water Resources (DWR) has developed the Sustainable Groundwater Management (SGM) Program. DWR's SGM Program responsibilities include: (1) developing regulations to manage groundwater basins; (2) identifying basins subject to critical conditions of overdraft; (3) evaluating and implementing Groundwater Sustainable Management Plans (GSMAs); (4) identifying basins subject to critical conditions of overdraft; and (5) publishing best management practices.

#### Announcements

**SGMA Groundwater Sustainability Plan (GSP) Draft**  
DWR has published Discussion Papers on all of the GSPs. The discussion papers can be submitted to [sgmps@dwr.ca.gov](mailto:sgmps@dwr.ca.gov). Information meetings are available [here](#).

**SGMA GSA notification received**  
DWR has received a notification of formation of a Groundwater Sustainability Agency (GSA) for the Sustainable Groundwater Planning Grant Program. DWR has released draft Guidelines and Proposal Solicitation for the Sustainable Groundwater Planning Grant Program. Find more information [here](#).

#### Groundwater Sustainability Program Draft

CA.gov | Help | Accessibility



## CALIFORNIA DEPARTMENT OF WATER RESOURCES

HOME NEWSROOM & EVENTS ISSUES ABOUT US

CA.gov | Help | Accessibility

Search

DWR California

## Groundwater

### Introduction

Groundwater resources play a vital role in maintaining California's economic and environmental sustainability. During an average year, California's 515 alluvial groundwater basins and subbasins contribute approximately 38 percent toward the State's total water supply. During dry years, groundwater contributes up to 46 percent (or more) of the statewide annual supply, and serves as a critical buffer against the impacts of drought and climate change. Many municipal, agricultural, and disadvantaged communities rely on groundwater for up to 100 percent of their water supply needs. Groundwater extraction in excess of natural and managed recharge has caused historically-low groundwater elevations in many regions of California.

DWR has a long-standing history of collecting and analyzing groundwater data, investigating and reporting groundwater conditions, implementing local groundwater assistance grants, encouraging integrated water management, and providing the technical expertise needed to improve statewide groundwater management practices. In addition, DWR is responsible for implementing the Sustainable Groundwater Management Act (SGMA), the California Statewide Groundwater Elevation Monitoring (CASGEM) Program, and characterizing California's groundwater basins through updates to Bulletin 118.

#### The Sustainable Groundwater Management (SGM) Program

To implement the increased responsibilities given to DWR by the 2014 Sustainable Groundwater Management Act (SGMA), DWR has expanded its existing local assistance programs in the Division of Integrated Regional Water Management (DIRWM) and has developed a Strategic Plan for the Sustainable Groundwater Management (SGM) Program. [More info...](#)

#### GROUNDWATER HOME

- SUSTAINABLE GROUNDWATER MANAGEMENT
- GROUNDWATER INFORMATION CENTER
- CASGEM
- BULLETIN 118



# Basins Subject to Critical Overdraft

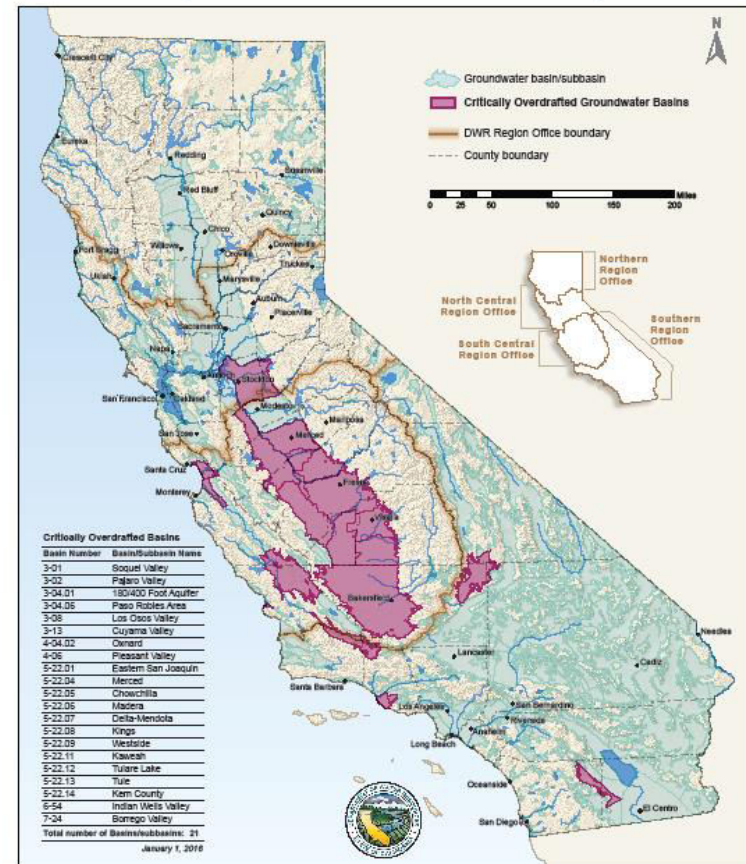
## Identify Basins Subject to Critical Conditions of Overdraft

Draft Completed July 2015

Public Comments September 1015

Completed January 2016

Critically Overdrafted Groundwater Basins – January 2016



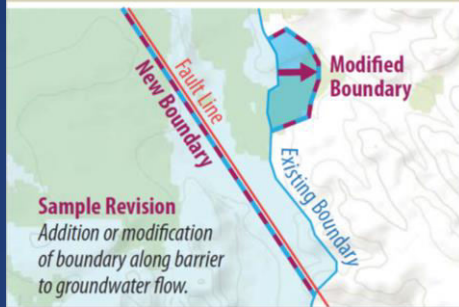
# Basin Boundary Regulations

## Article 3

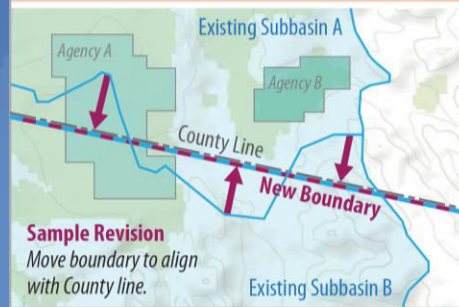
### Scientific

### Jurisdictional

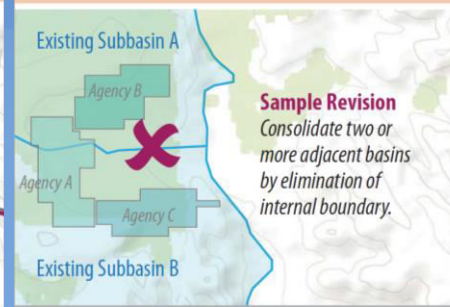
#### Scientific



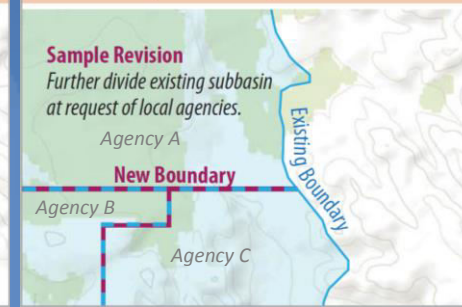
#### Internal (Jurisdictional)



#### Consolidation (Jurisdictional)



#### Subdivision (Jurisdictional)



## Develop Emergency Regulations - Basin Boundary Revisions

Draft Regulations Posted (July 2015)

Public Comments Closed (Sept 2015)

Regulations Completed (November 2015)

# Groundwater Sustainability Plan Regulations

## Groundwater Sustainability



*Undesirable Results:  
Significant and Unreasonable...*



Surface Water  
Depletion



Reduction  
of Storage



Degraded  
Quality



Seawater  
Intrusion



Land  
Subsidence



Lowering  
GW Levels

Governance

Coordination

Land Use

State of the Basin

Sustainability  
Goal

Measurable  
Objectives &  
Undesirable  
Results

Monitoring Plan

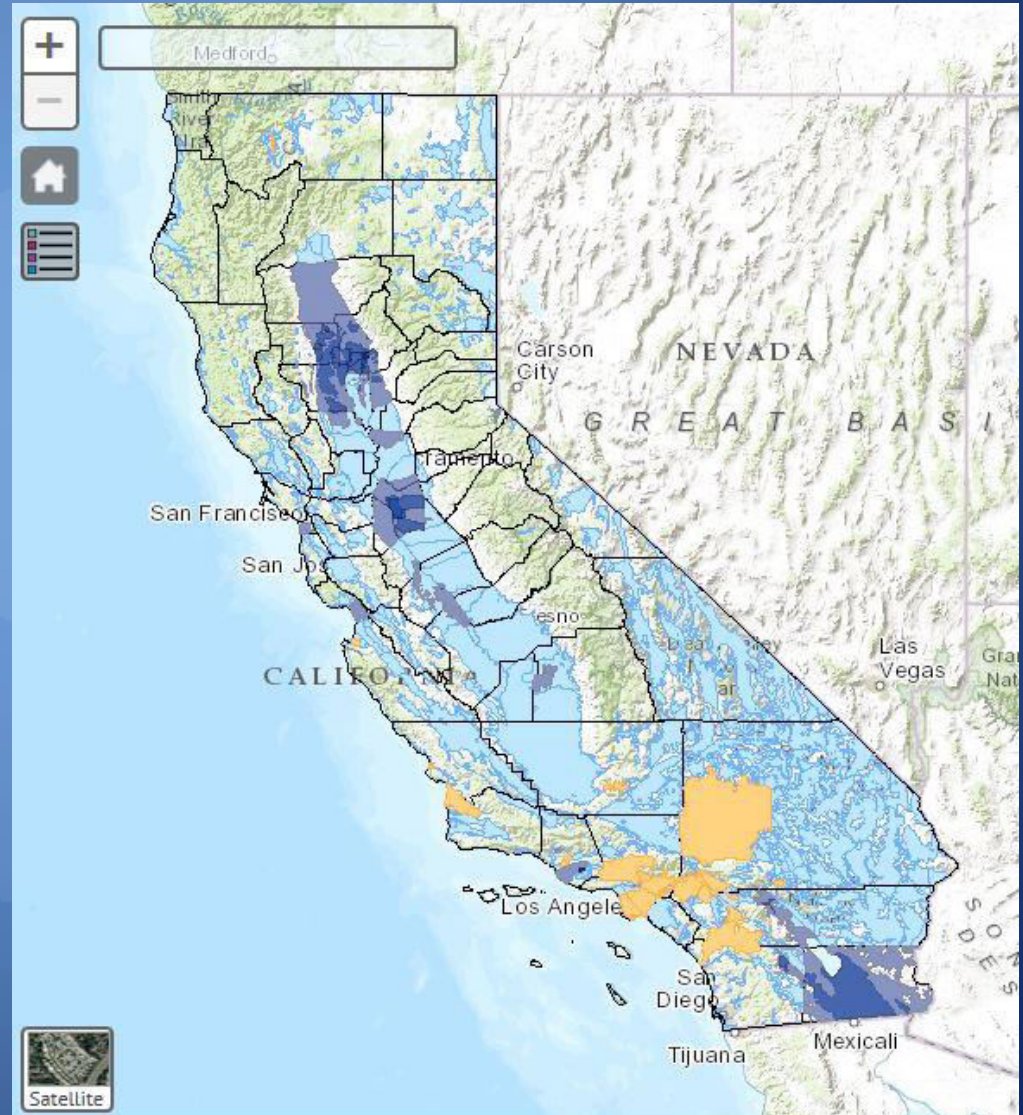
Implementation  
& Reporting

Alternative  
Plans & Frings  
Areas

# ***GSA Formation***

## **New SB 13 Requirements**

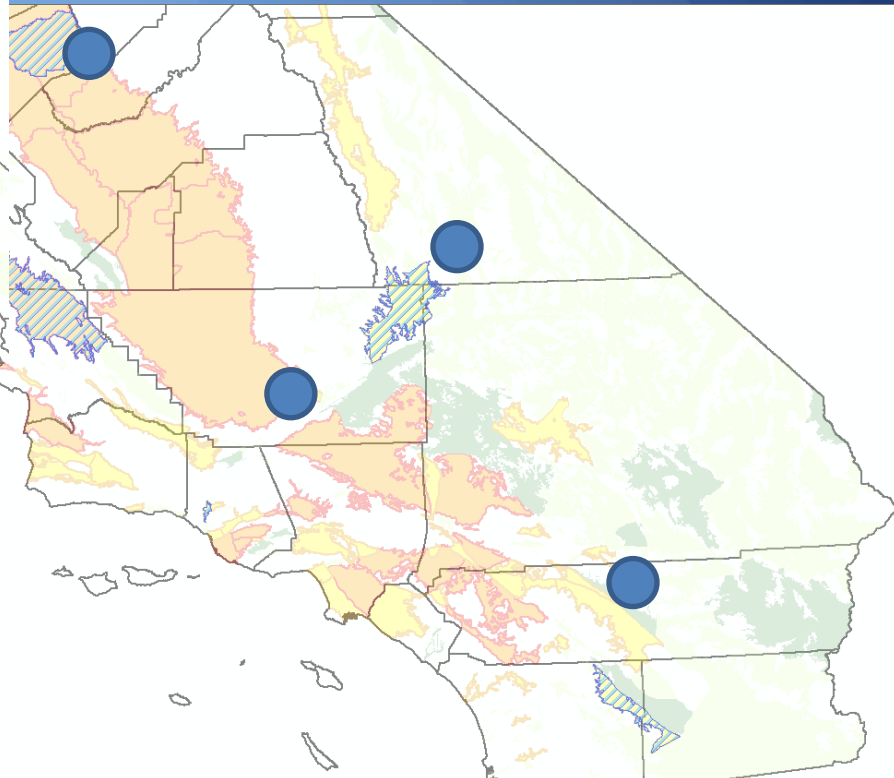
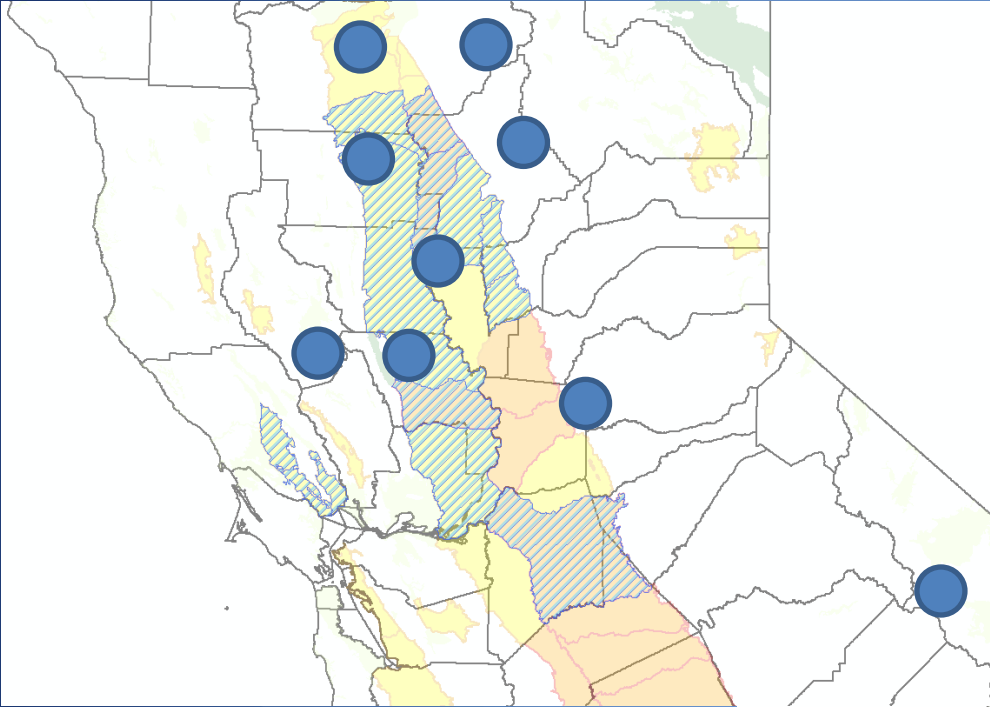
- **Complete Notifications**
- **No Overlapping Jurisdictions**
- **134 GSA Notifications**  
(as of January 29, 2016)



Assistance to Locals

# Facilitation Support Service

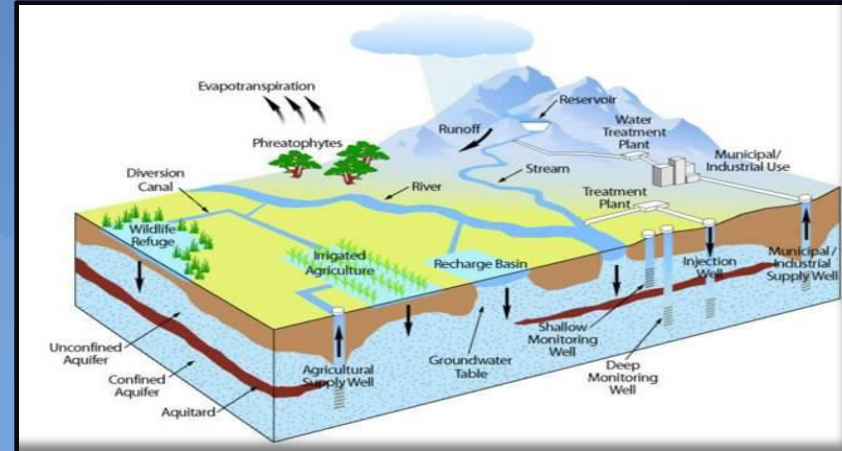
Facilitation Services



21 applications received  
8 contracted  
6 pending further funding

# ***DWR's upcoming Program Implementation:***

- ***Develop BMPs***
- ***Basin Re-prioritization***
- ***Update Bulletin 118***
- ***Provide Funding Proposition 1***
- ***Water Available for Recharge***
- ***Framework for Data Management***
- ***Regional Water Budget Support***
- ***Update Well Standards***





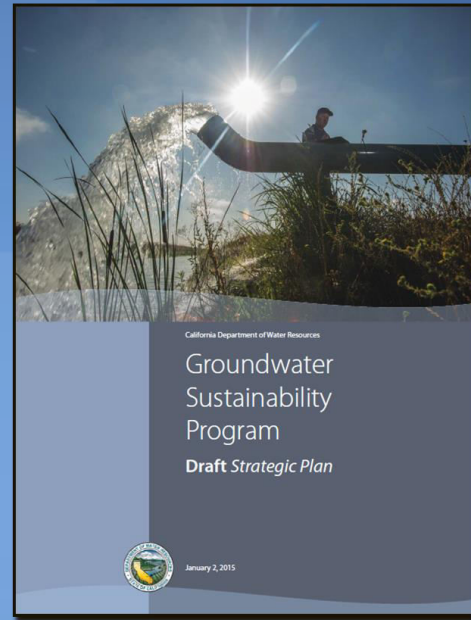
# Success Factors

- **GSA formation**
- **Data gaps, acquisition and management**
- **Fact and Fiction** – Communication and Outreach
- **Support and Assistance**
- **Overall Implementation and Decisions** – Balancing supply and demand

# Questions

*When properly managed, groundwater resources will help protect communities, farms, and the environment against the impacts of prolonged dry periods and climate change.*

California Water Action Plan 2014



State: <http://groundwater.ca.gov>

DWR: <http://www.water.ca.gov/groundwater/>

SWRCB: [http://www.waterboards.ca.gov/water\\_issues/programs/gmp/](http://www.waterboards.ca.gov/water_issues/programs/gmp/)

