

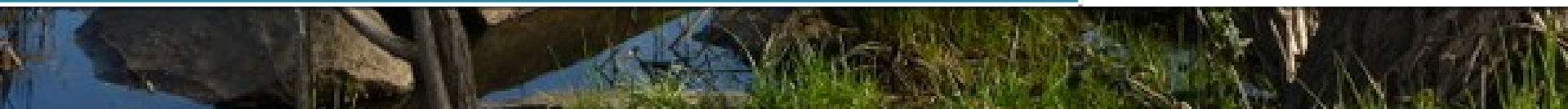


Sustainable Water Management Profile

North Bay Watershed Association [™] April 22, 2016


WATER
FOUNDATION[®]

An initiative of Resources Legacy Fund



How do you measure Sustainability?



Sustainable Water Management

- Water is managed in a way that meets current economic, ecological, and quality of life needs without compromising the ability to meet those needs in the future.



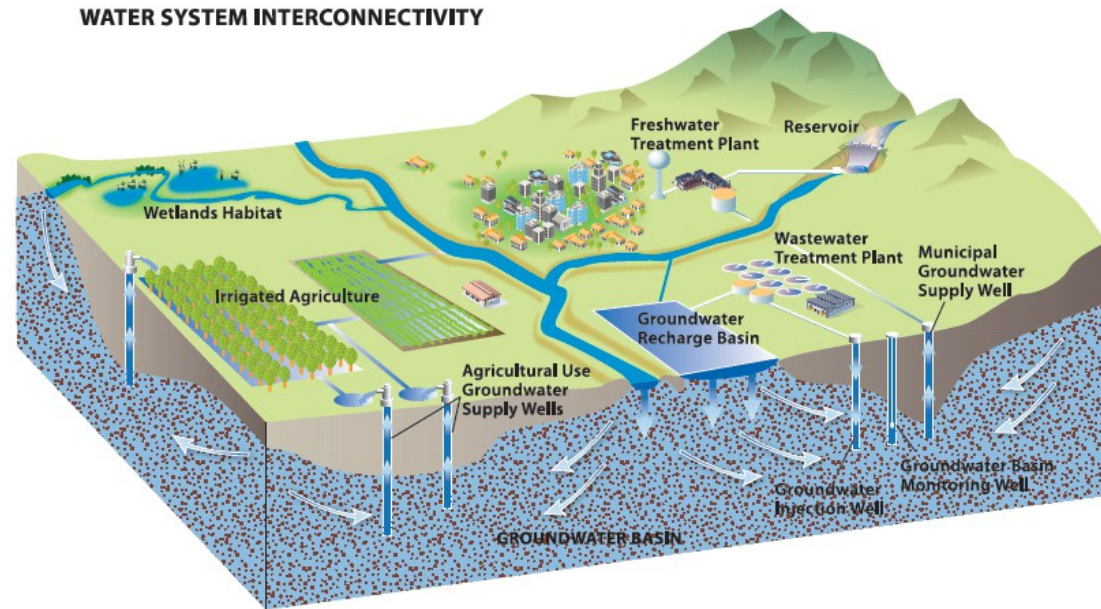
Water System Challenges

- Increasing Population
- Aging infrastructure
- Groundwater overdraft
- Degraded ecosystems
- Increasing conflict
- Management fragmentation
- Uncertainty due to climate change



Solving California's Water Crisis

- No single strategy can meet all needs
- Integrated, diverse strategies contribute to sustainable solutions
- Water management actions and issues are interconnected
- Manage water as a natural resource



Challenge

- As water supplies come under increased pressure, regions lack a uniform tool to assess water management sustainability



Goal

- Find or develop a tool to assess sustainable water management and inspire improvement at a regional scale



SWM Profile

- Water Foundation's tool for advancing long-term water supply resilience and water resource stewardship at a regional scale



SWM Profile Is Not...

- Traditional “ESG” analysis
- Small-scale site-specific analysis
- Designed to be global or international tool
- Stakeholder-driven certification process
- All-encompassing sustainability analysis

SWM Profile Is...

- Focused on sustainable water supply management
- Accessible to different audiences
- Flexible and scalable
- Voluntary
- Easy to implement
- Expert driven

SWM Profile Development



An initiative of Resources Legacy Fund



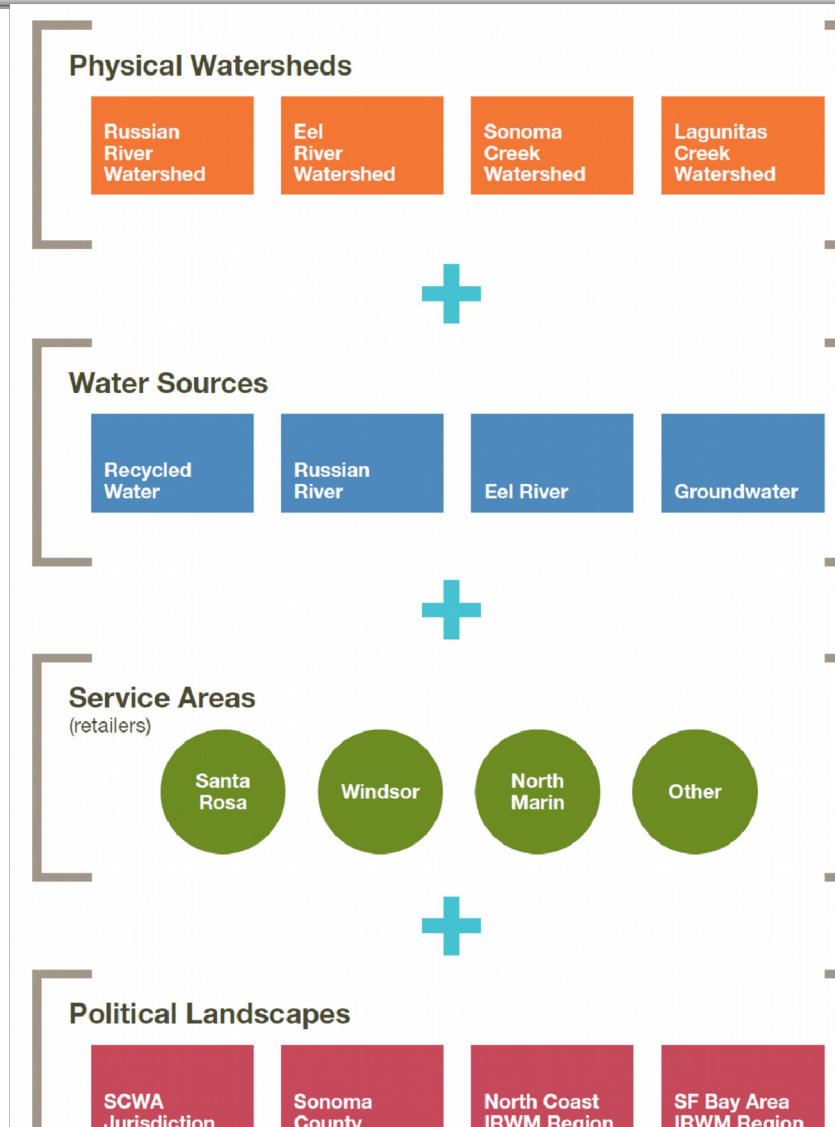
SWM Profile Development

- Partner for Pilots: SCWA (v1.0); IEUA (v2.0)
- Peer Review
 - Advisory Committee
 - Subject matter experts
- Coordination with other water sustainability efforts
 - Ceres (AquaGuage, Green bonds)
 - DWR (Sustainability Indicators Framework)

SWM Profile Potential Users

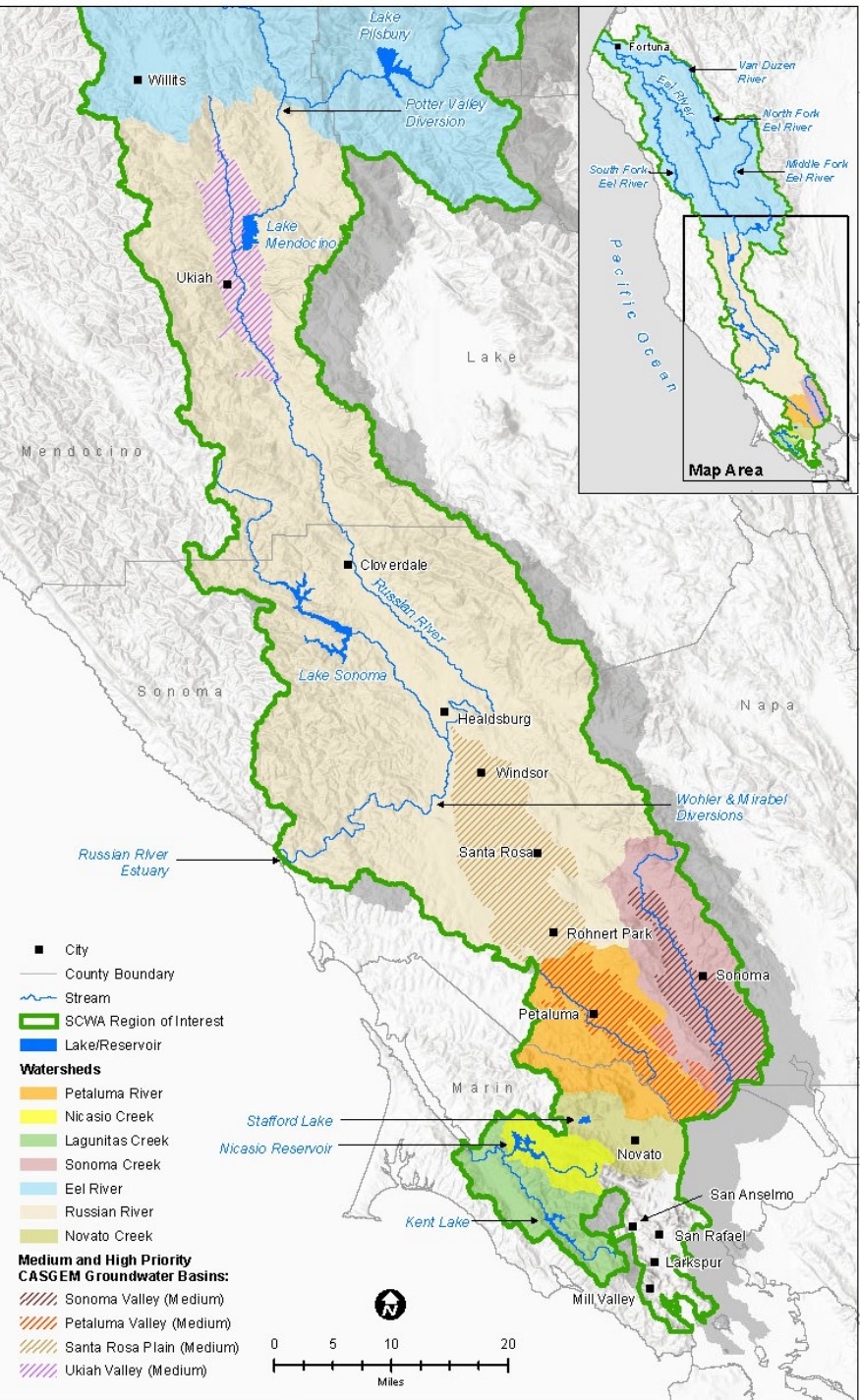
- Profiled water agency (“Profile Subject”)
- Regional entities
- Nonprofit organizations
- Financial/business
- State and federal agencies
- Policy makers
- Public

Defining "Region"



- SWM Profile region: "Region of Interest"
- Assessment boundaries: flexible by stressor

Sonoma County Region of Interest



Inland Empire Region of Interest



SWM Profile Themes



Supply



Demand



Environment



Finance

Stressors: Supply



Supply Reliability



Groundwater Supply



Source Water Quality



Natural Hazards



Climate Change



Stressors: Demand



Urban Demand



Agricultural Demand



Stressors: Environment



Sensitive Species



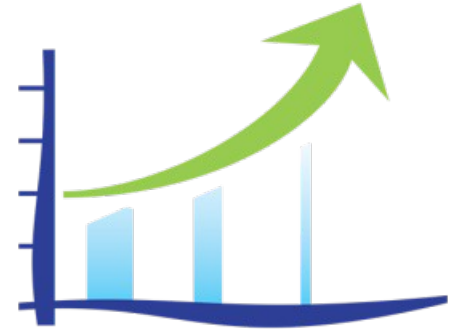
Watershed Health



Stressors: Finance



Finance and Investment



SWM Profile Framework

Themes	Stressors	Stress Level	Management Response			
		High/Moderate/Low	Initial Steps	Moderate Progress	Advanced Progress	Leading Practice
SUPPLY						
	1. Supply Reliability					
	2. Groundwater Supply					
	3. Source Water Quality					
	4. Natural Hazards					
	5. Climate Change					
DEMAND						
	6. Urban Demand					
	7. Agricultural Demand					
ENVIRONMENT						
	8. Sensitive Species					
	9. Watershed Health					
FINANCE						
	10. Finance and Investment					

Sample SWM Profile Rating



56

Silver

Very Good



72

72

Gold

Outstanding



82

82

Platinum

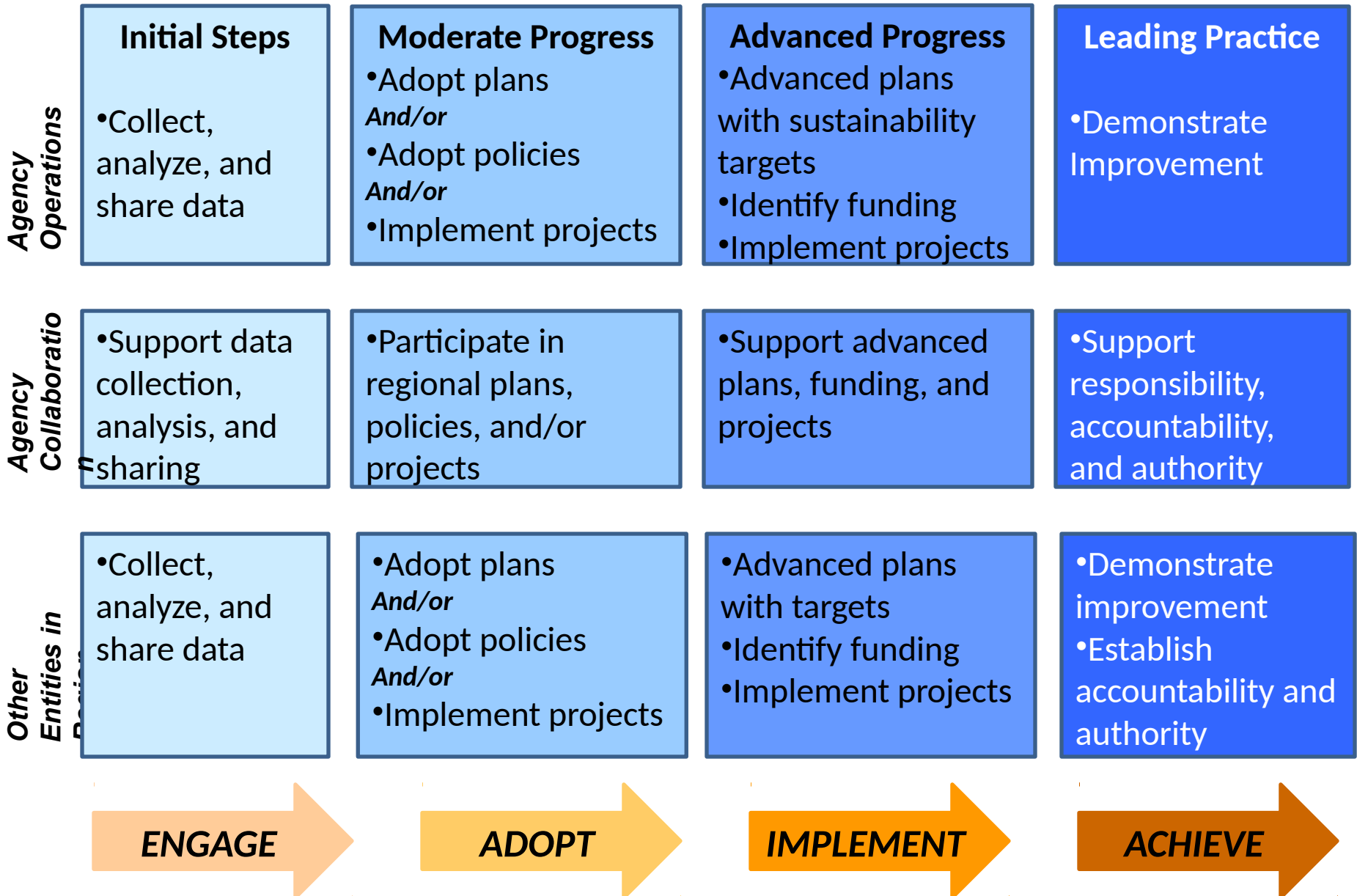
On the path to
Sustainability

Fundamental Challenges

- SWM Profile rates a Profile Subject, in part, on regional actions outside of its control
- The SWM Profile sets a high bar

- Assess management responses to stressors across three levels:
 - Agency operations
 - Agency collaboration
 - Other entities in the region
- Add bronze rating level

Management Response Framework



Version 2.0: Framework

MANAGEMENT RESPONSES

STRESSOR	STRESS LEVEL	Agency Operations				Agency Collaboration				Other Entities in the Region			
		Initial Steps	Moderate Progress	Advanced Progress	Leading Practice	Initial Steps	Moderate Progress	Advanced Progress	Leading Practice	Initial Steps	Moderate Progress	Advanced Progress	Leading Practice
1 Supply Reliability	●			●		●			●				
2 Groundwater Supply	●		●		●					●			
3 Source Water Quality	●				●		●			●			
4 Natural Hazards	●			●				●				●	
5 Climate Change	●	●			●					●			
6 Urban Demand	●		●				●				●		
7 Agricultural Demand	●			●		●					●		
8 Sensitive Species	●		●				●		●				
9 Watershed Health	●				●		●					●	
10 Finance and Investment	●	●			●					●			

STRESS LEVEL

- High Stress
- Moderate Stress
- Low Stress

MANAGEMENT RESPONSES

- Complete
- Partially Complete

SWM Profile: Opportunities

- Communication tool for water utilities/regions
- Roadmap to sustainability
- Use existing data/reports in a meaningful way
- Inspire regional collaboration and integration
- Promote change

Next Steps

- Pilot test refined tool (v2.0) with IEUA
- Business plan

Questions?

- Mike Myatt, Program Manager
- mmyatt@resourceslegacyfund.org
- waterfoundation.net



An initiative of Resources Legacy Fund