

California's Actions on Sea-Level Rise



Credit: Patrick Kelley, USCG

Sam Schuchat, Executive Director , Coastal Conservancy

April 13, 2012

 San Francisco Bay
Conservation and Development Commission

California Department of
Toxic Substances Control

STATE OF CALIFORNIA
**BUSINESS, TRANSPORTATION &
HOUSING AGENCY**

**DEPARTMENT OF
WATER RESOURCES**

 CALIFORNIA
**COASTAL
COMMISSION**


Caltrans

 CALIFORNIA
STATE PARKS
SINCE 1864


Coastal
Conservancy

California State Lands Commission


 CALIFORNIA
**natural
resources**
AGENCY

DEPARTMENT OF
FISH AND GAME 

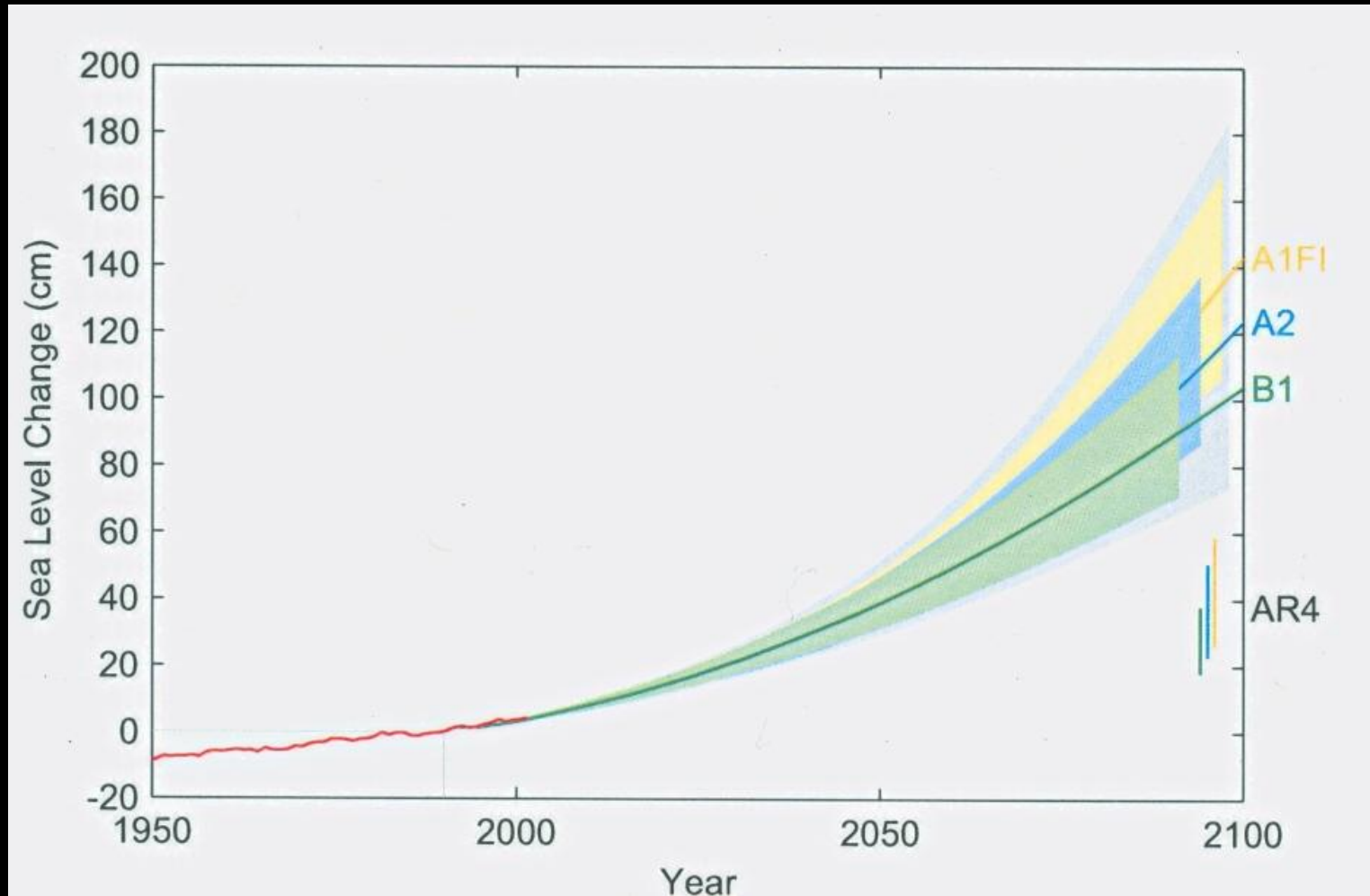
 GOVERNOR'S OFFICE OF PLANNING AND RESEARCH
STATE OF CALIFORNIA

The Governor's Office
of Planning and Research

California Department of
Public Health  CDPH

 CALIFORNIA ENVIRONMENTAL PROTECTION AGENCY
STATE WATER RESOURCES CONTROL BOARD

December 2009 Proceedings of the National Academy of Sciences publication by Vermeer and Rahmstorf



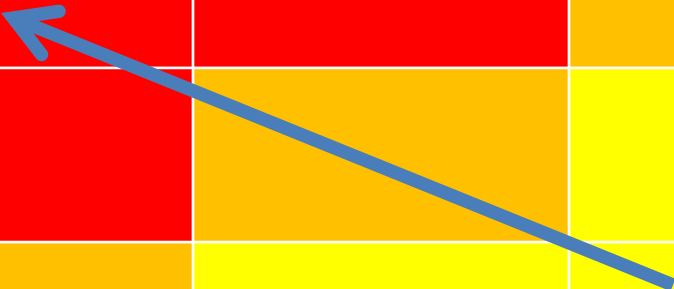
Sea-Level Rise Projections (Yr 2000 Baseline)

Year		Average	Range
2030		7 in	5-8 in
2050		14 in	10-17 in
2070	Low	23 in	17-27 in
	Medium	24 in	18-29 in
	High	27 in	20-32 in
2100	Low	40 in	31-50 in
	Medium	47 in	37-60 in
	High	55 in	43-69 in



Consequence = Impacts x Adaptive Capacity

	Low Adaptive Capacity	Medium Adaptive Capacity	High Adaptive Capacity
High Impact	Red	Red	Orange
Medium Impact	Red	Orange	Yellow
Low Impact	Orange	Yellow	Yellow





2009 CALIFORNIA CLIMATE ADAPTATION STRATEGY

A Report to the Governor of the State of California
in Response to Executive Order S-13-2008

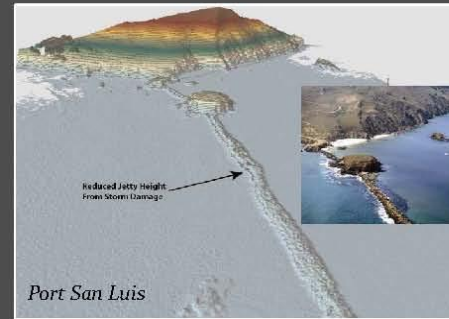


California Coastal LiDAR Project

Toward a modern topography of the coastal zone



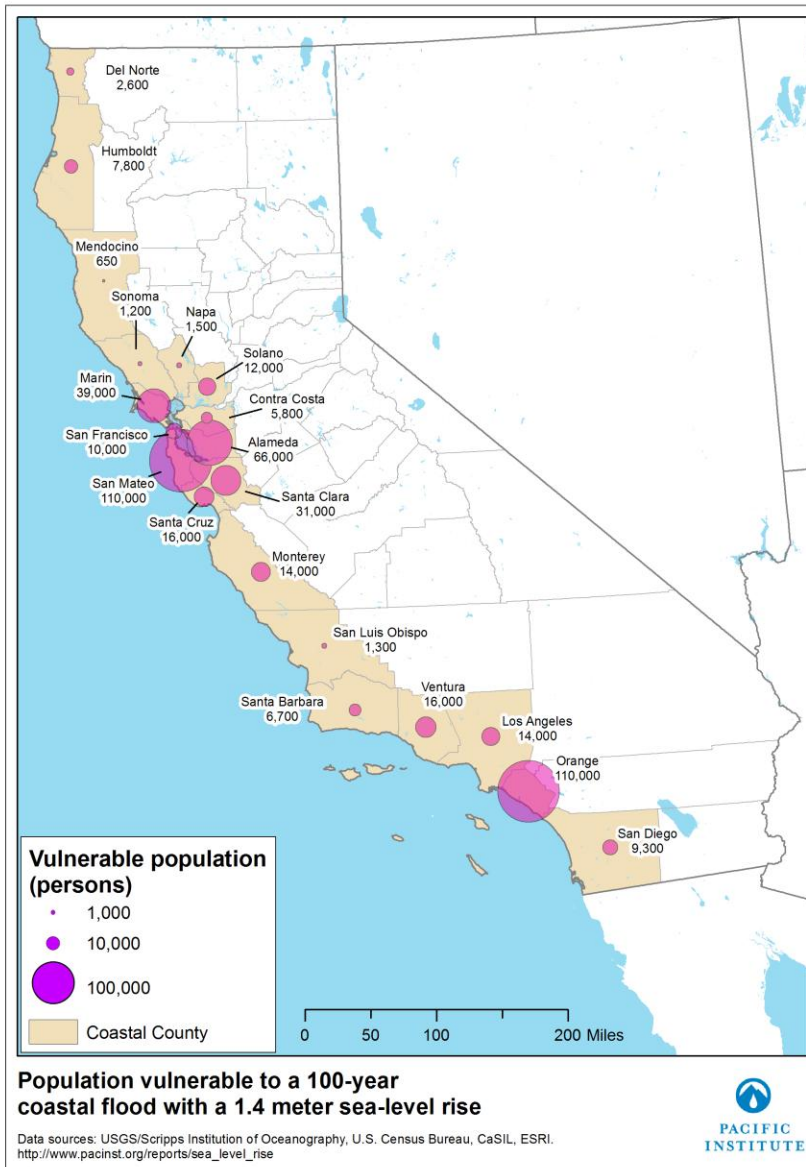
Moss Landing Harbor



Port San Luis

February 2010





55 in sea-level rise + 100 year storm =

\$100 billion in property at risk

480,000 people at risk

Flood Risk and Sea Level Rise – South Bay

Economic Impact, San Francisco Bay Area

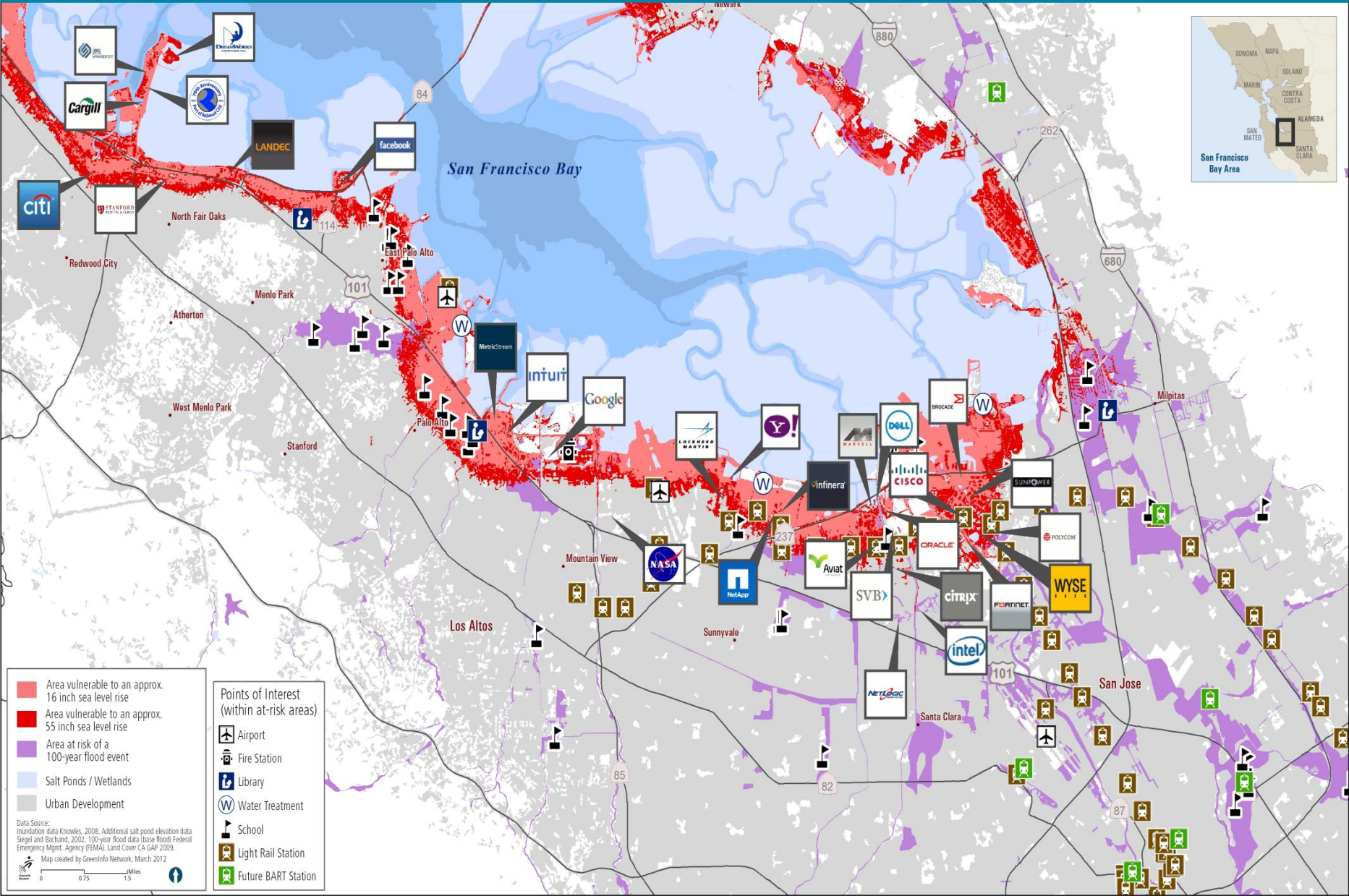




Photo: Mark Taylor

