

# Environmental Efforts by Ranchers & the Marin RCD in Marin County



**TOMALES BAY WATERSHED  
AGRICULTURAL LANDS  
MARIN COUNTY, CA**



- TOMALES BAY WATERSHED
- NATIONAL PARK AGRICULTURAL LAND
- GRAZING LAND



# SITE CHARACTERISTICS: CHILENO VALLEY



# PROJECT GOALS OF THE Marin Resource Conservation District

- Conservation of rangeland, cropland and forests
- Protection and improvement of water quality
- Control of soil erosion
- Riparian habitat restoration
- Active support of our district's agricultural economy and heritage





# RCD PROGRAMS & FUNDERS

## SEDIMENT

State Coastal Conservancy

## WATER QUALITY

State Water Resources Control Board

## FISHERIES

CA Dept Fish and Wildlife

## WILDLIFE HABITAT

US Fish and Wildlife Service

## PINE GULCH PONDS

CA Department of Fish and Wildlife, SCC

## METHANE

State Water Resources Control Board

& USDA NRCS

## WEST MARIN COMPOST

USDA Natural Resources Conservation  
Service, County of Marin

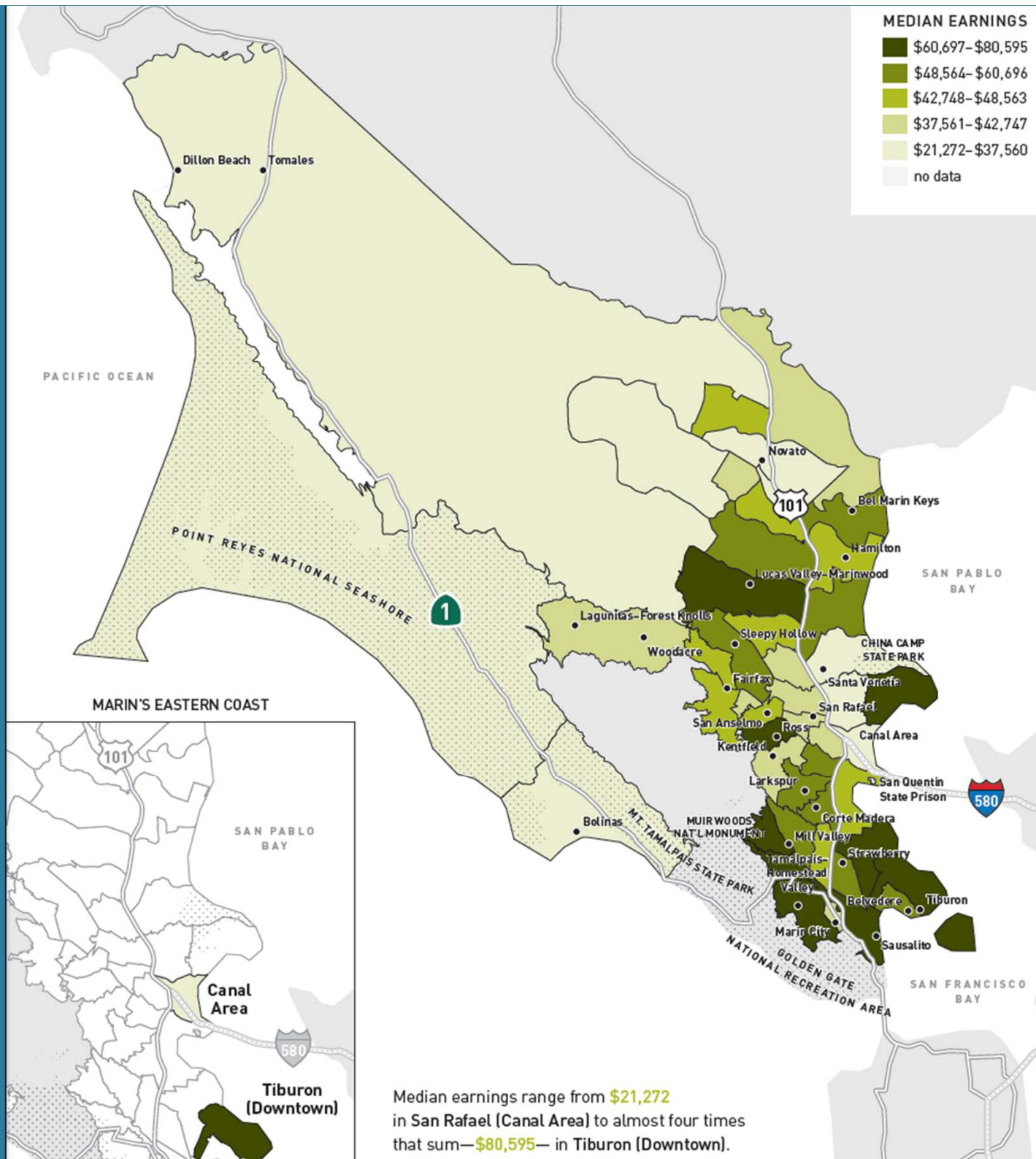
## MARIN CARBON PROJECT

11<sup>th</sup> Hour, MCF, SCC, USDA, County of  
Marin, MALT, Rathman Family Foundation

## MARIN COASTAL PERMIT

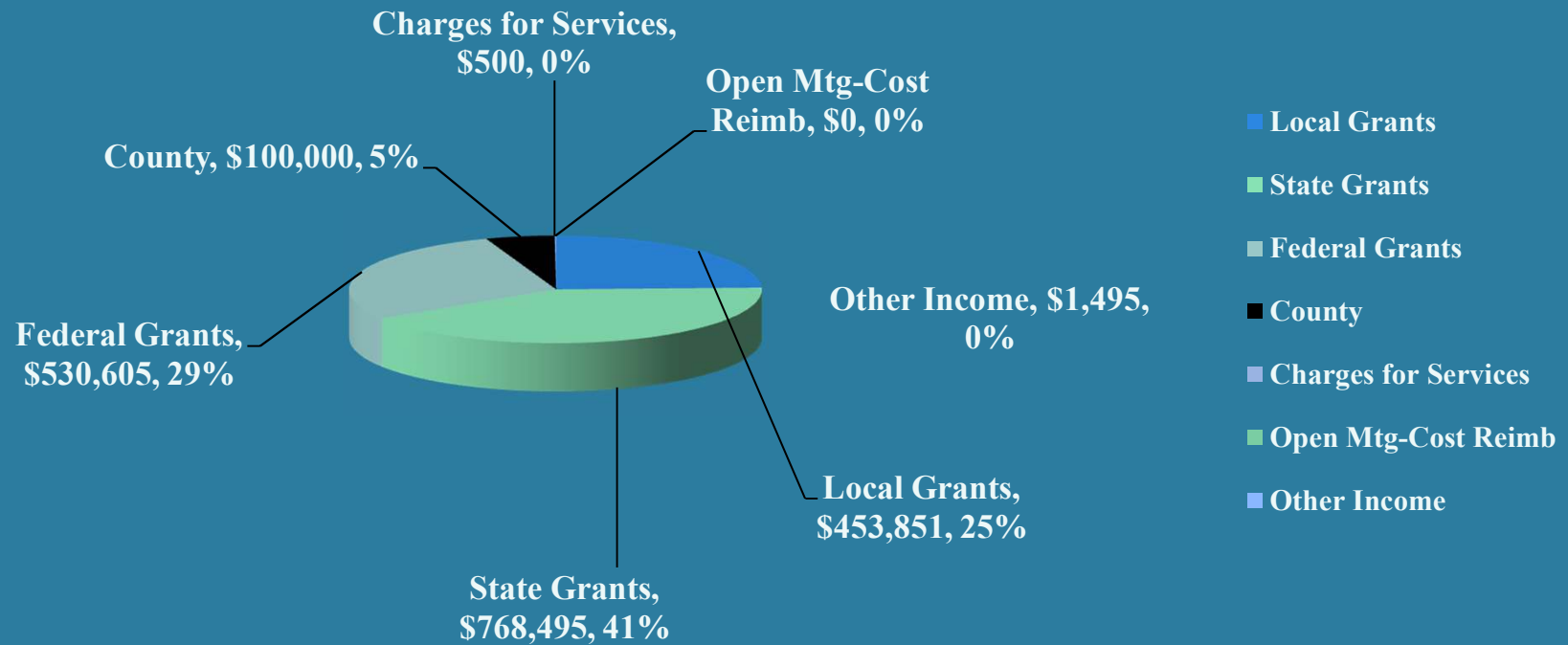
## COORDINATION PROGRAM

Sustainable Conservation, SCC



# RCD FUNDING

## 2011-2012 REVENUES BY SOURCE



\* Ranchers share 10-25% of cost



# INTEGRATED RANCH PLAN



## Legend

### Parcel Boundary

Corda Ranch

### Ranch Infrastructure

Fencing, Existing

Water Developments, Existing

### Completed Practices

Compost Application/ Mulching

### Planned Practices

Silvopasture

Field/Riparian Forest Buffer

Stream Crossing Repair

Stream Restoration and/or Planting

Riparian Buffer Planting

Windbreak

Fencing/Access Control

### Water Development

Pipeline

Troughs





# BEFORE THE PROJECT: STEMPLE CREEK RANCH



# AFTER THE PROJECT: STEMPLE CREEK RANCH





# BEFORE THE PROJECT: CHILENO VALLEY RANCH



# AFTER THE PROJECT: CHILENO VALLEY RANCH





# RCD RESULTS – 30 Years



- \$16M applied to projects
- 300+ conservation practices
- 68 Ranchers and Farmers
- 80 on waiting list for future work
- 20 miles of stream restored
- 30 species of native plants used
- 35,000 native trees and shrubs
- 500+ STRAW volunteers
- Exponential increases in neomigratory bird counts
- Salmon sightings where previously unseen

# PARTNERS



- Ranchers
- Students & Teachers Restoring a Watershed
- Point Blue Conservation Science
- Marin Agricultural Land Trust
- USDA Natural Resources Conservation Service
- UC Cooperative Extension Service
- Point Reyes National Seashore
- Marin Municipal Water District



# PARTNER PERFECTION



- **GOOD, LONG TERM RELATIONSHIPS**
- **COOPERATION, NOT COMPETITION**
- **FREQUENT INTERACTIONS**
- **IDENTIFICATION AS A GROUP**
- **SERVICE PROVISION RATHER THAN EMPIRE BUILDING**



# RANCHER CHARACTERISTICS

- AGE
- RANCH TYPE
- RANCH SIZE
- MULTI-GENERATIONAL
- COMMON CULTURE
- INTER-CONNECTEDNESS
- NEWBIES





# CHALLENGES

- **OVERCOMING RELUCTANCE**
- **MATCHING PRIORITIES**
- **CREATING BUY-IN**
- **BEING FAIR**
- **MAINTAINING THE RELATIONSHIP**



# RANCHER MOTIVATIONS

- **Ranching improvements**
- **Cost share**
- **Love seeing wildlife**
- **Norming**
- **Doing it for ?**





# WHAT WORKS

- MEETING RANCHERS IN THEIR WORLD
- RELATIONSHIPS/ IN FOR THE LONG HAUL
- HONESTY AND SELF DISCLOSURE/SHARING YOUR STORY
- RANCHER TO RANCHER COMMUNICATION
- HAVING A GREAT BOARD/ DEEP ROOTS





# TRUST







**Thank you**