

North Bay Watershed Association



Executive Director Transition Recommendations July 10, 2015

I Background

II Criteria

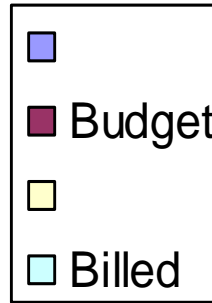
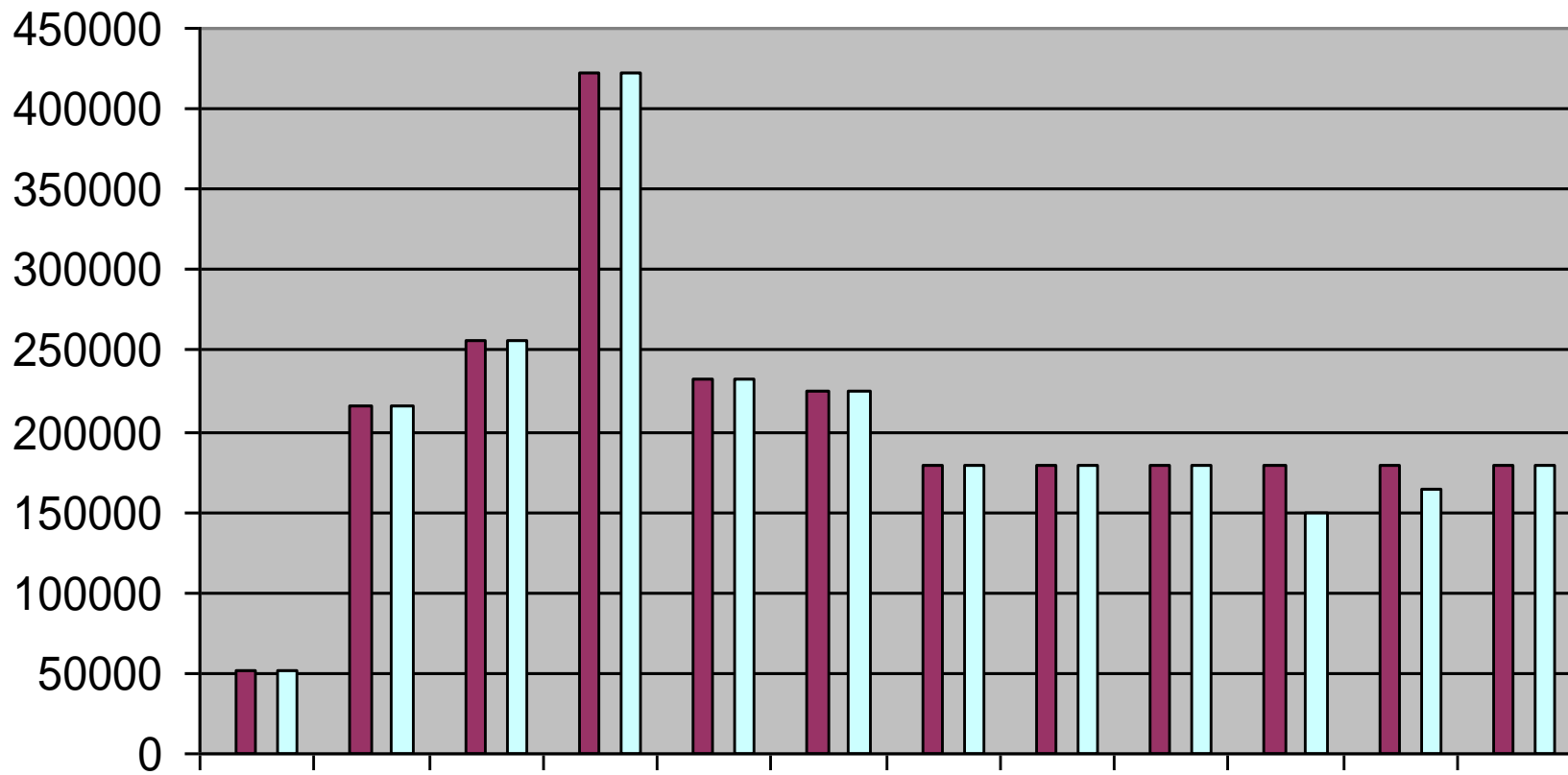
III Candidate

IV Process

V Recommendations

Background

- NBWA initiated in 2000
- First Executive Director- Randy Raines, RMC
- 2004 Transition->



Criteria

- **Knowledge of Federal and State Grant programs**
- **Knowledge of State and Federal Water Programs**
- **Experience in recruiting speakers**
- **Experience working with local elected officials**
- **Experience organizing Conferences**
- **NBWA will be primary focus**

Candidate- Judy Kelly



BIO

- Director, San Francisco Estuary Partnership
 - Managing Bay Area IRWM Grants
 - Managing US EPA Water Quality Improvement Fund Grants
 - Hosts Major Conference biannually
 - Housed in ABAG
- Deputy Director, CALFED Bay Delta Program
- US EPA
- NOAA

Transition

- Retiring end of 2015
- Available to attend key meetings for next 6 months

Criteria

- ✓ Knowledge of Federal and State Grant programs
- ✓ Knowledge of State and Federal Water Programs
- ✓ Experience in recruiting speakers
- ✓ Experience working with local elected officials
- ✓ Experience organizing Conferences
- ✓ NBWA will be primary focus

Process

- Informal recruitment
- Interview with subset of Administrative Steering Committee
 - Jack Gibson
 - Grant Davis
 - Keith Caldwell
- Check in with several key Board members and long time supporters of NBWA

Recommendations

- Forgo formal recruitment process
- Endorse Judy Kelly at same rate of pay as E.D. now
- “Appoint” Judy Kelly as Executive Director effective January 1, 2016