



# PEAIP PROJECT UPDATE

Jamison Crosby, Program Manager

Napa Countywide Stormwater Pollution Prevention Program

March 10, 2015

# Project Partners – Thank You!



- Board of Directors
- Joint Technical Committee



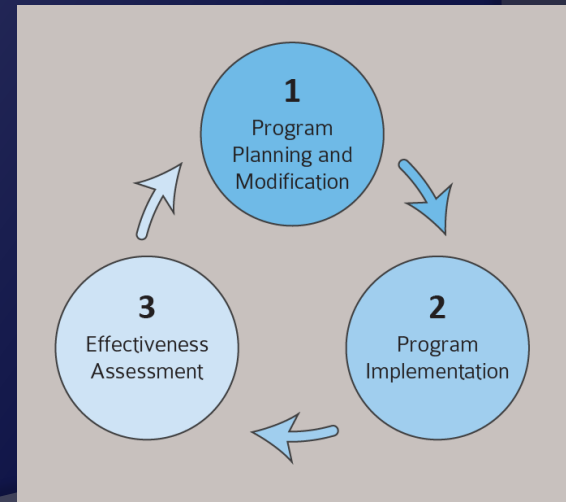
Marin County Stormwater Pollution Prevention Program  
Napa Countywide Stormwater Pollution Program  
Benicia  
Petaluma  
City and County of Sonoma  
County of Solano  
SCWA



# PEAIP in a nutshell

Program Effectiveness Assessment and Improvement Plan:

- Strategy for *tracking short and long term stormwater program effectiveness*
- *Specific assessment measures*
- *How to use assessment information to improve programs*



# Timeline and Goal

- July 2013 – effective date of “New” Phase II Permit
  - Program Effectiveness Assessment Improvement Plan
- February 2014 – Project proposal approved by NBWA Joint Tech Cmte
- NBWA Executive Director and MMWD executed contract with LWA
- July 2014 – Kickoff meeting in Sonoma  
21 municipal participants
- April 2015 - Final PEAIP delivered along with Tracking Tool
  - **Goal** – provide an *integrated, consistent* way for all North Bay permittees to comply with this requirement

# Focus on TMDL Pollutants

Stormwater Program	Municipality	Pollutants of Concern (POCs) <sup>1</sup>		
		Pathogens (Indicator Bacteria)	Diazinon and Pesticide-Related Toxicity	Sediment
Marin County Stormwater Pollution Prevention Program (MCSTOPPP)	County of Marin	✓	✓	✓
	City of Belvedere	✓	✓	✓
	Town of Corte Madera		✓	✓
	Town of Fairfax		✓	✓
	City of Larkspur		✓	✓
	City of Mill Valley	✓	✓	✓
	City of Novato		✓	✓
	Town of Ross		✓	✓
	Town of San Anselmo		✓	✓
	City of San Rafael		✓	✓
	City of Sausalito	✓	✓	✓
	Town of Tiburon	✓	✓	✓
Napa Countywide Stormwater Pollution Prevention Program (NCSPPP)	County of Napa	✓		✓
	City of American Canyon	✓		✓
	City of Calistoga	✓		✓
	City of Napa	✓		✓
	City of St. Helena	✓		✓
	Town of Yountville	✓		✓
Municipal Stormwater Agencies in Sonoma and Solano Counties	County of Sonoma	✓	✓	✓
	County of Solano <sup>2</sup>		✓	
	Sonoma County Water Agency <sup>2,3</sup>		✓	
	City of Benicia <sup>2</sup>		✓	
	City of Petaluma		✓	
	City of Sonoma <sup>4</sup>	✓	✓	✓

# Pesticides

## Education and Outreach [OL2-3]

<ul style="list-style-type: none"> <li>• Is the target audience aware of the less toxic methods of pest control that are available?             <ul style="list-style-type: none"> <li>○ What is the source of their information?</li> </ul> </li> </ul>	<p><b>Descriptive Statistics</b></p> <ul style="list-style-type: none"> <li>• # and % of those aware of less toxic methods of pest control</li> <li>• # and types of specific information sources identified (PSAs, brochures, community events, "Our Water Our World" campaign [OWOW], etc.)</li> <li>• # of outreach materials distributed</li> </ul> <p><b>Comparison to Established Reference Points; Temporal Change</b></p> <ul style="list-style-type: none"> <li>• Review results of future surveys to see if change in awareness has occurred</li> <li>•</li> </ul>	<p><b>Internal Tracking by Stormwater Program; Surveying</b></p> <ul style="list-style-type: none"> <li>• Survey target audience regarding awareness of less toxic methods of pest control. Identify the source(s) of information (PSAs, brochures, community events, "Our Water Our World" campaign [OWOW], etc.)</li> <li>• Track number of outreach materials provided and taken at public outreach events, Public Works counters, etc.</li> </ul>
<ul style="list-style-type: none"> <li>• Is the target audience aware of the actions that they can take to reduce the presence of pesticides in surface waters (e.g., using less toxic products, properly disposing of pesticide-containing waste, including unused quantities of pesticides)?             <ul style="list-style-type: none"> <li>○ What is the source of their information?</li> <li>○ Are they taking those actions?</li> </ul> </li> </ul>	<p><b>Descriptive Statistics</b></p> <ul style="list-style-type: none"> <li>• # and % of those aware of specific actions they can take</li> <li>• # and types of specific information sources identified (PSAs, brochures, community events, "Our Water Our World" campaign [OWOW], etc.)</li> <li>• # of outreach materials distributed</li> <li>• # and % of those taking each of the specified actions</li> </ul> <p><b>Comparison to Established Reference Points; Temporal Change</b></p> <ul style="list-style-type: none"> <li>• Review results of future surveys to see if change in behavior has occurred</li> </ul>	<p><b>Internal Tracking by Stormwater Program; Surveying</b></p> <ul style="list-style-type: none"> <li>• Survey target audience regarding awareness of actions that can be taken to reduce the presence of pesticides in surface waters and whether they are taking those actions. Identify the source(s) of information (PSAs, brochures, community events, "Our Water Our World" campaign [OWOW], etc.)</li> <li>• Track number of outreach materials provided and taken at public outreach events, Public Works counters, etc.</li> </ul>

# Pathogens

Management Questions	Data Assessment Methods	Data Collection Methods
Education and Outreach [OL2-3]		
<p><b>Public Participation and Outreach</b></p> <ul style="list-style-type: none"> <li>• Is the target audience aware of the sources of fecal coliform and the actions that they can take to reduce the presence of fecal coliform in surface waters?               <ul style="list-style-type: none"> <li>○ What is the source(s) of their information?</li> <li>○ Are they taking those actions?</li> </ul> </li> </ul>	<p><b>Descriptive Statistics</b></p> <ul style="list-style-type: none"> <li>• # and % of those aware of sources of fecal coliform</li> <li>• # and % of those aware of specific actions that they can take</li> <li>• # and types of specific information sources identified (pet waste signs, PSAs, brochures, community events, dog tag licensing, etc.)</li> <li>• # of outreach materials distributed</li> <li>• # and % of those taking each of the specified actions</li> </ul> <p><b>Comparison to Established Reference Points; Temporal Change</b></p> <ul style="list-style-type: none"> <li>• Review results of future surveys to see if behavior change has been reported</li> </ul>	<p><b>Internal Tracking by Stormwater Program; Surveying</b></p> <ul style="list-style-type: none"> <li>• Survey general public regarding sources of coliform and health risks, awareness of actions they can take, and whether they are taking those actions.</li> <li>• Identify the source(s) of information (pet waste signs, PSAs, brochures, community events, dog tag licensing, etc.).</li> <li>• Track number of outreach materials provided and taken at public outreach events, Public Works counters, etc.</li> </ul>

# Sediment

Management Questions	Data Assessment Methods	Data Collection Methods
<b>Construction Site Stormwater Runoff Control [OL2-3]</b>		
<ul style="list-style-type: none"> <li>• Are the construction sites being managed so that they are in compliance with the corresponding permits, local codes, and ordinances and preventing sediment from leaving the site?               <ul style="list-style-type: none"> <li>○ Are Erosion Control, Sediment Control, and Good Housekeeping and Material and Waste Management BMPs being implemented and maintained?</li> <li>○ What are the common issues with BMP implementation that are identified during inspections?</li> </ul> </li> </ul>	<p>Descriptive Statistics</p> <ul style="list-style-type: none"> <li>• # inspections conducted</li> <li>• # and % of sites requiring follow-up inspection due to inadequate erosion and sediment control BMPs.</li> </ul> <p>Qualitative Assessment</p> <ul style="list-style-type: none"> <li>• Narrative assessment of common issues with BMP implementation that were identified</li> </ul>	<p>Internal Tracking by Stormwater Program; Site Investigations/Inspections</p> <ul style="list-style-type: none"> <li>• Track inspection results for all sites inspected, including number of initial inspections and follow-up inspections, BMP implementation issues identified</li> </ul>



Sediment	Sum or Average (All Years)	Fiscal Year				
		2015-16	2016-17	2017-18	2018-19	2019-20

**Construction Site Stormwater Runoff Control [Internal Tracking by Stormwater Program]**

Total number of construction sites	0					
Number of inspections conducted	0					
Number of sites with BMPs implemented/maintained	0					
Number of sites requiring corrective action	0					
Percent of sites requiring corrective action						

Note: Common BMP implementation issues identified should be reviewed and summarized with narrative assessment.

**Pollution Prevention and Good Housekeeping [Internal Tracking by Stormwater Program]**

**Training**

Number of training sessions held or attended	0					
Total # of participants	0					

**Pollution Prevention and Good Housekeeping [Surveying]**

Total number of <b>pre-training</b> survey responses	0					
Total % Correct, <b>pre-training</b> survey (all questions)						
Total number of <b>post-training</b> survey responses	0					
Total % Correct, <b>post-training</b> survey (all questions)						
<i>Change, pre- and post-training</i>						

**Awareness of erosion and sediment control BMPs**

% Correct, <b>pre-training</b> survey (all applicable questions)						
% Correct, <b>post-training</b> survey (all applicable questions)						
<i>Change, pre- and post-training</i>						

**Understanding of erosion and sediment control BMP implementation**

% Correct, <b>pre-training</b> survey (all applicable questions)						
% Correct, <b>post-training</b> survey (all applicable questions)						
<i>Change, pre- and post-training</i>						

**Pollution Prevention and Good Housekeeping [Internal Tracking by Stormwater Program]**

**Plan for repair and/or replacement of crossings/culverts**

Prioritized implementation plan completed?	Yes/No					
Total number of surveyed stream crossings/culverts	0					
Number prioritized	0					
Percent prioritized	NA	NA	NA	NA	NA	NA
# requiring repair and/or replacement	0					
# repaired and/or replaced	0					
Percent repaired and/or replaced	NA	NA	NA	NA	NA	NA

Note: Results of routine visual inspections should also be reviewed.

# Tracking Tool

Questions?

# Planning for Trash

- ◉ April 2015: State Water Board adopted stringent trash control requirements
- ◉ Ultimate Deadline: ~June 2029 municipalities prohibited from discharging trash  $\geq 5\text{mm}$  from Municipally Owned Storm Drain System (MS4)
- ◉ Compliance Tracks
  - Track 1 – install full capture systems in priority land use areas
  - Track 2 – install full capture systems and other trash and litter reduction efforts to achieve same result as Track 1
    - Develop and follow an Implementation Plan
    - Monitor to show equivalency with Track 1

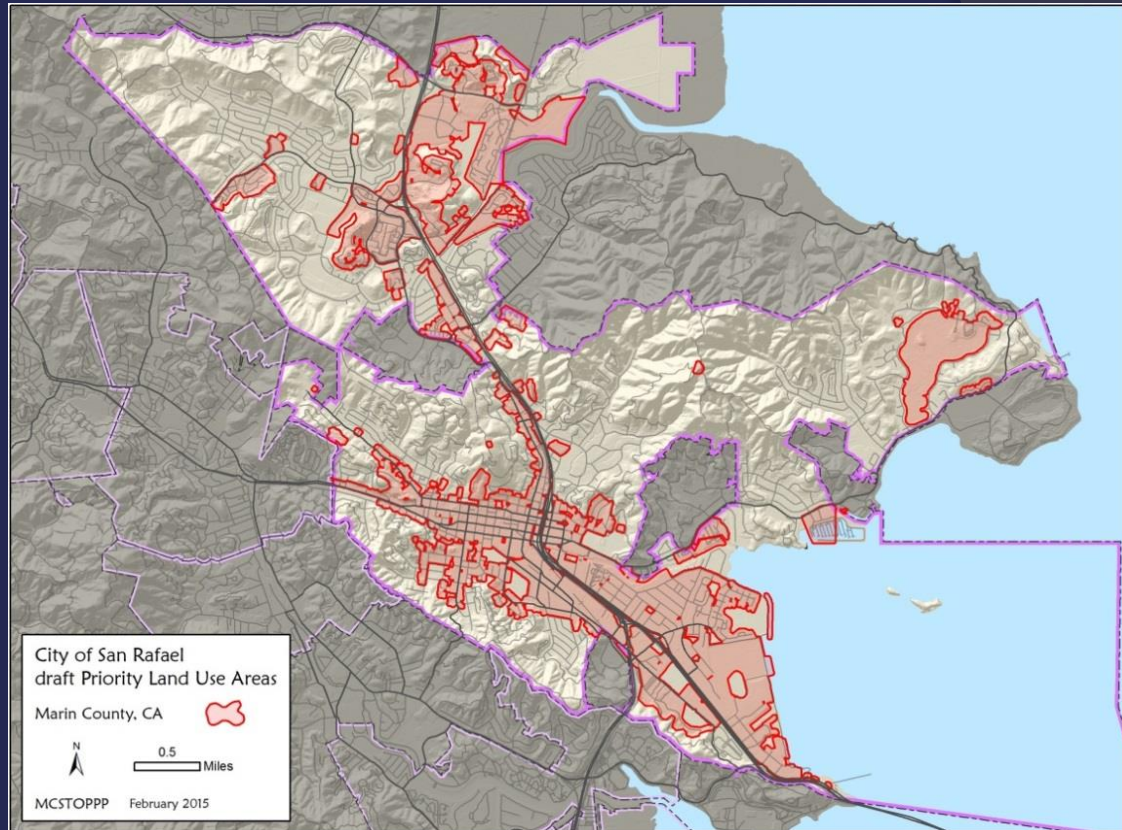
# Full Capture System Examples

- Connector Pipe Screens, Gross Solids Removal Device, Hydrodynamic Separators, Nets



# Priority Land Uses

- ⦿ High Density Residential (10 units/acre)
- ⦿ Industrial
- ⦿ Commercial
- ⦿ Mixed Urban (combo)
- ⦿ Public Transportation Stations



Draft map shows Priority Land Use Areas in City of San Rafael. The map does not include public transportation stations.

# Future NBWA Project

- BASMAA Phase II Committee will ask the NBWA Joint Tech Cmte to recommend providing seed money for a trash requirements planning project
- The project will be funded by north municipalities who elect to participate (and with NBWA assistance if approved)
- Provide concrete tools municipalities need to complete required Implementation Plans by ~FY 18-19

# Future NBWA Project

<b>Task</b>	<b>Potential Funding -includes in-kind</b>
<b>1. Priority Land Use Maps</b>	Permittees
<b>2. Follow protocol to develop Trash Generation Rates (TGR) in Priority Land Use Areas</b>	NBWA (potential) AND Permittees
<b>3. Trash Generation Rate Maps</b>	NBWA (potential) AND Permittees
<b>4. Implementation Plan Template</b>	NBWA (potential)
<b>5. Trash Management Area Maps</b>	Permittees
<b>6. Preliminary Full Capture System Maps</b>	Permittees
<b>7. Monitoring Technical Memo</b>	Permittees
<b>8. Monitoring Method &amp; Tools</b>	Permittees

# Project Process

- August 2015: Ask BASMAA Board to release project RFP
- October 2015: Receive proposals – better understand project cost and scope.
- ~October 2015: Clarify proposed NBWA portion of project and bring to JTC
- ~November 2015: NBWA Board Request
- Jan-March 2016: BASMAA execute contract (if approved by all)
- ~June 2016: Complete project