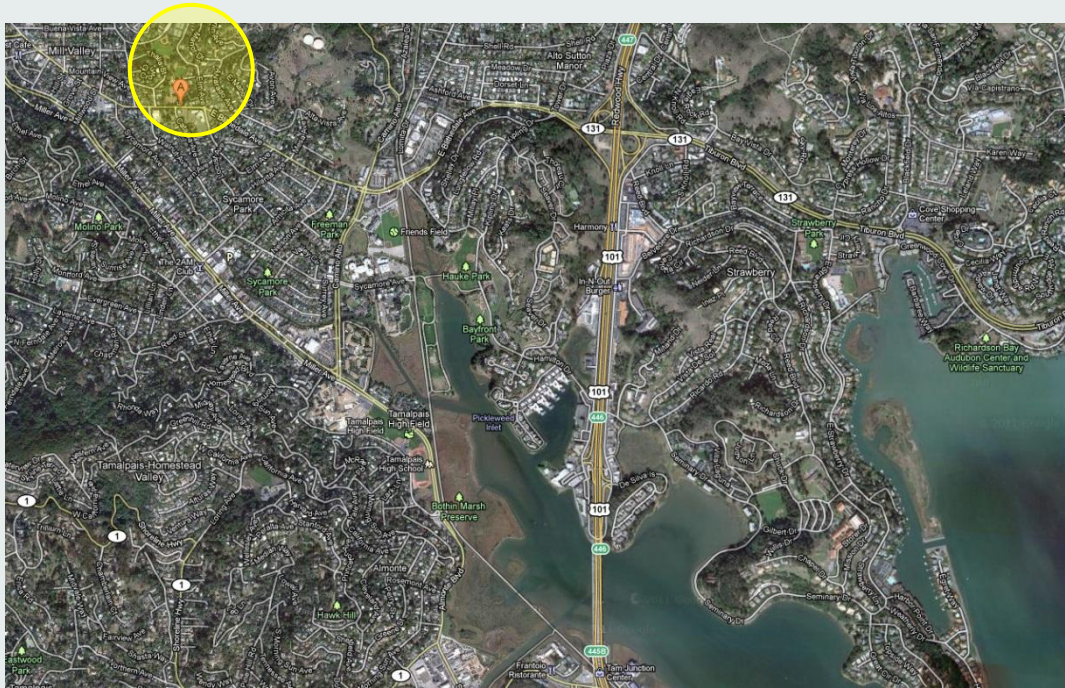


BOYLE PARK CREEK RESTORATION



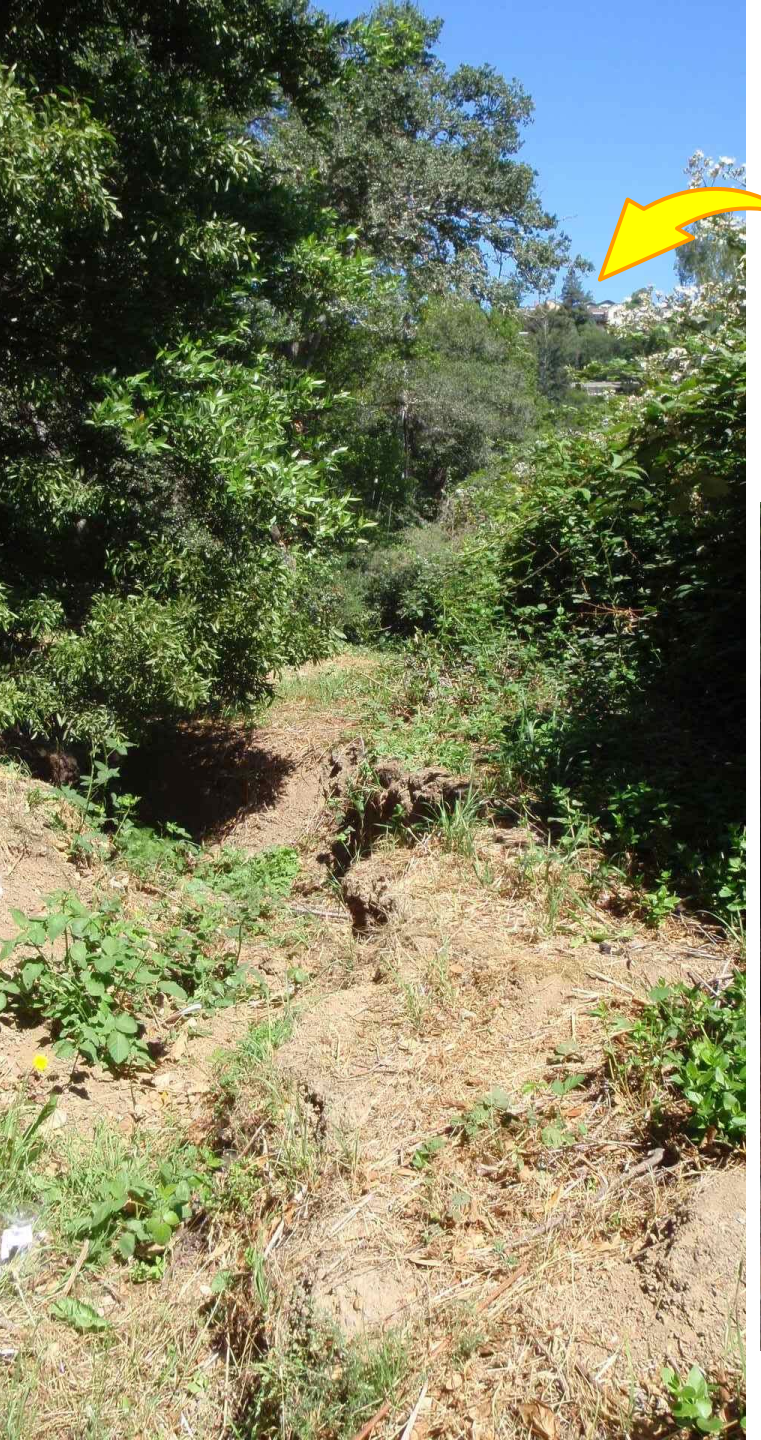
**North Bay Watershed Association Watershed Council Update
September 18, 2014**

PROJECT GOALS

- Reduce pathogen delivery through increased infiltration through a healthy riparian area
- Improve water quality in a tributary to Warner Creek
- Restore the riparian corridor
- Re-contour the incised channel to provide an active channel and floodplain
- Increase community awareness of water quality and habitat issues in the watershed



DOWNSTREAM PARK ENTRANCE



MIDDLE REACH LOOKING DOWNSTREAM



MIDDLE REACH



ELM AVE. UPSTREAM



TMDL OUTREACH

**Mill Valley Parks
Commission
Boyle Park
Celebration**

**Marinas and boat
owners**

Story maps

Watershed Guide

**Rainfall and
plant monitoring**

**5 STRAW classes
planted the site**

**Stormdrain
mapping and
marking**



Thank you to our partners and funders!

- **EPA's San Francisco Bay Water Quality Improvement Fund**
- **San Francisco Estuary Partnership**
- **North Bay Watershed Association**
- **Marin Municipal Water District**
- **North Bay project partners**

- **The City of Mill Valley**
- **Coastside Concrete**
- **Point Blue Conservation Science's STRAW Program**
- **Marin County Flood Control Zone #3**
- **Marin County Stormwater Pollution Prevention Program**
- **Restoration Design Group**
- **Students, teachers, and parents from Park School, Old Mill, Marin Horizon, and Hidden Valley**

- **Southern Marin Flood Protection and Watershed Program**

