



# EPA TMDL Grant and Marin Watershed Program Update

Boyle Park, Mill Valley

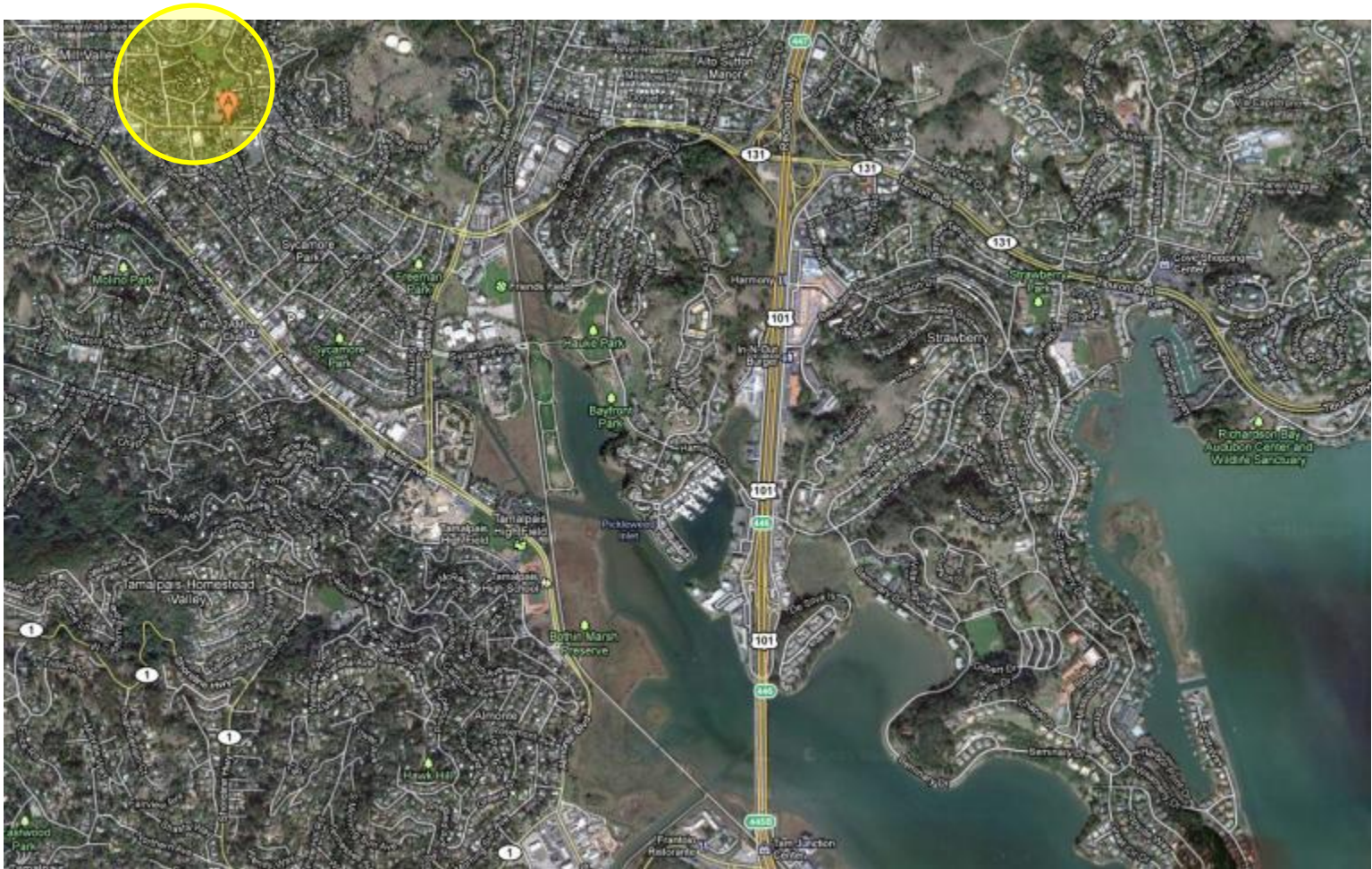
Presentation to the NBWA Watershed Council

May 7, 2013

# Overview

- Boyle Park restoration site and design
- Community and TMDL outreach
- Monitoring
- Schedule

# Boyle Park



# Project site





**Upstream end of project reach, some willows and bays,  
understory dominated by ivy.**



**Blackberry to be removed and channel banks revegetated with natives. New split rail fencing to be installed along edge of Elm Ave.**



**Looking downstream at concrete, ivy, and Himalayan blackberry**

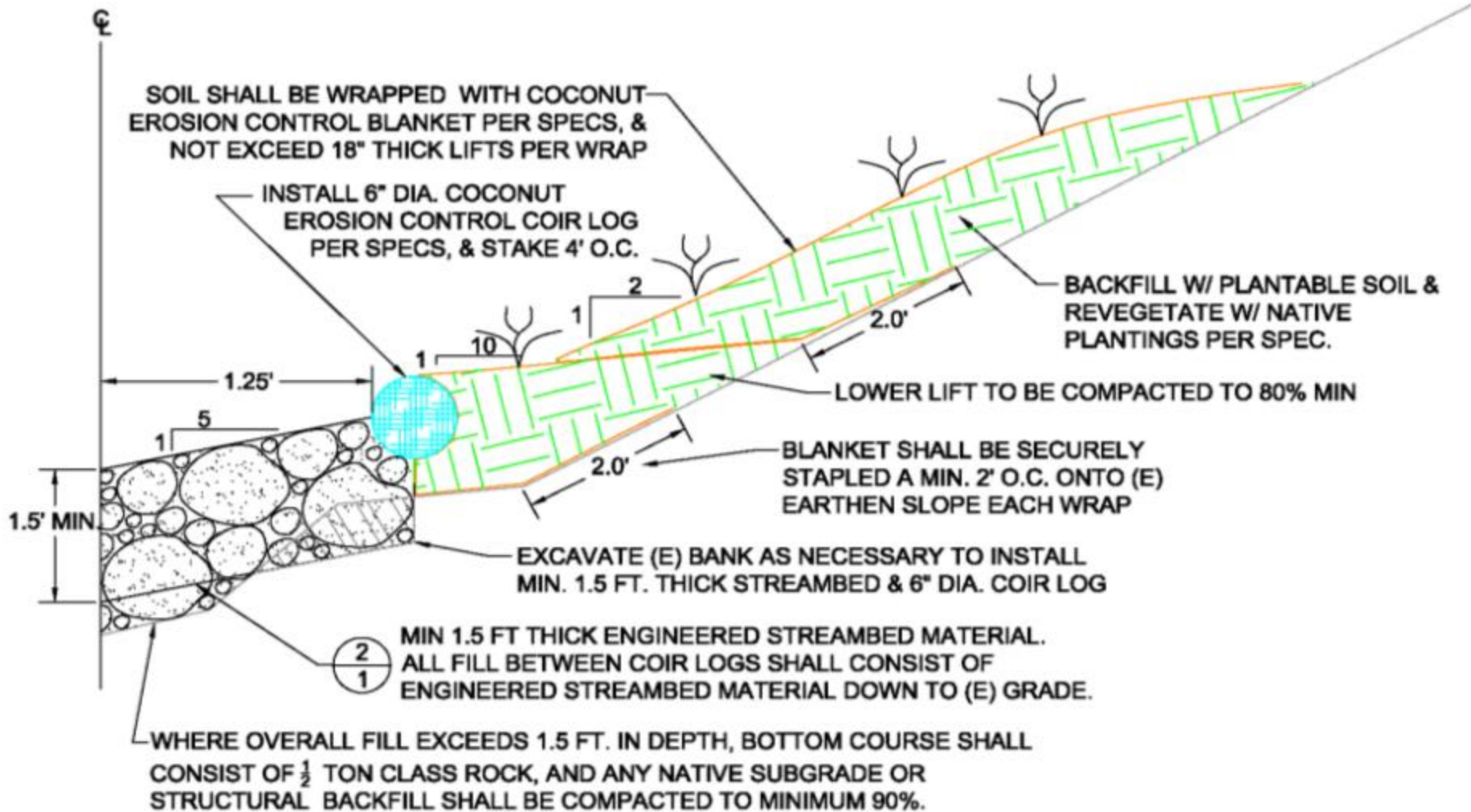


**Incised channel at downstream reach**

# Project goals

- Reduce pathogen delivery through increased infiltration through a healthy riparian area
- Improve water quality in a tributary to Warner Creek
- Restore the riparian corridor
  - Removal of invasive non-native vegetation
  - Revegetate with native species
- Re-contour the incised channel to provide an active channel and floodplain
- Provide fencing to protect riparian plantings
- Increase community awareness of water quality and habitat issues in the watershed

# Project Features



## BANKLINE DETAIL

**NOT TO SCALE**

# Planting List

- Big leaf maple 4
- Box elder 3
- CA buckeye 4
- Coast redwood 6
- Coyote brush 23
- Creek dogwood 6
- Toyon 6
- Coffeeberry 27
- Pink flowering currant 7
- CA rose 14
- Elderberry 8
- Sedges, fescue, rushes 270
- Native grasses and flower seed

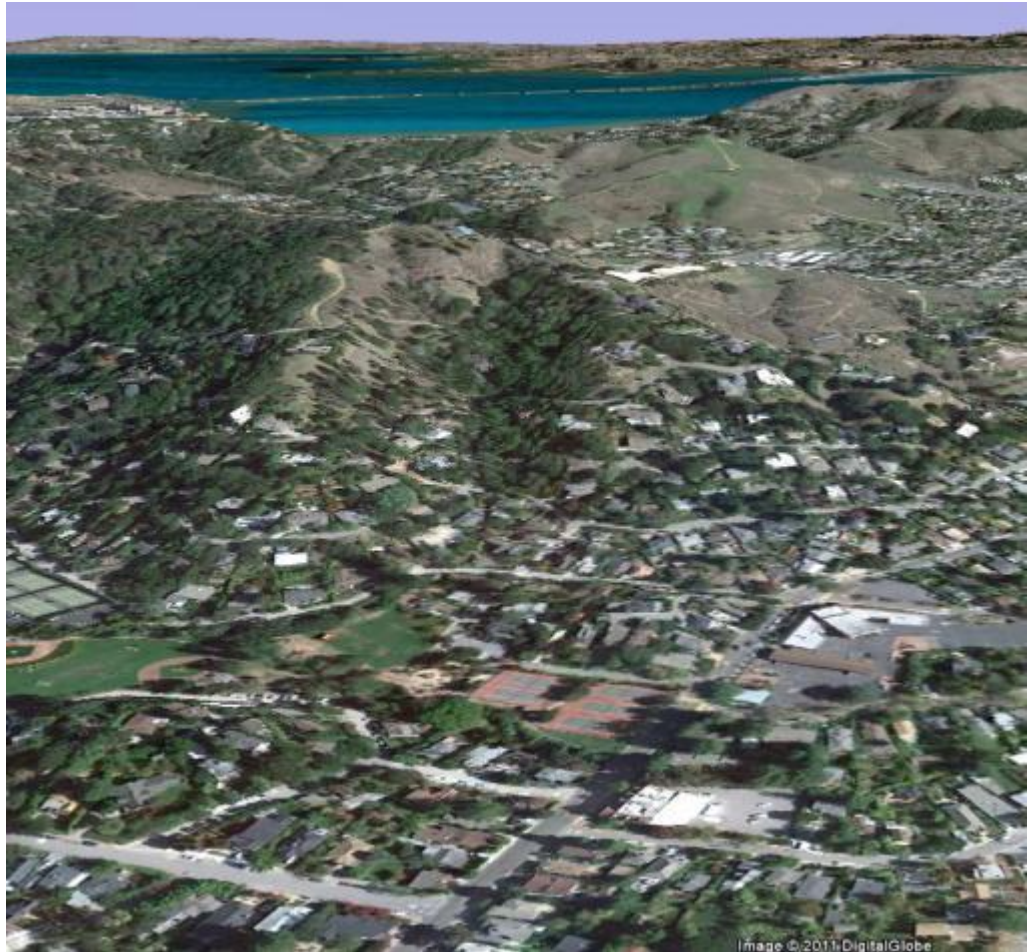






# Outreach

- Two STRAW restoration days
- Community day
- Stormdrain stenciling
- Signage
- Waste bag dispenser
- [www.marinwatersheds.org](http://www.marinwatersheds.org)



# TMDL Outreach

- Stormwater-focused outreach
  - Messaging to pet owners at dog parks, open space, municipal parks and at pet-related businesses
  - Boat and marina outreach through free tide calendars
  - Outreach to nurseries and also through the Bay-friendly landscaping program to reduce over-irrigation and runoff
  - Best Management Practice (BMP) materials for restaurants to address proper disposal of cleaning water

# Monitoring



- STRAW restoration monitoring: 3 years
- Rain gauge data
- Marina and houseboat monitoring

# Schedule (optimistic)

- Permits submitted
- Public bidding for grading early this summer
- Construction this fall
- Revegetation will occur the first winter after construction



# Questions?

Chris Choo, Watershed Planner

[cchoo@marincounty.org](mailto:cchoo@marincounty.org)

415.473.7586