



MEETING THE MOMENT

As we stand at the precipice of accelerating climate change and species decline, we must increase the pace and scale of restoration projects. We need a workforce trained to accomplish it.

CURRENTLY NO STANDARDIZED TRAINING EXISTS FOR ECOLOGICAL TRADE WORKERS.

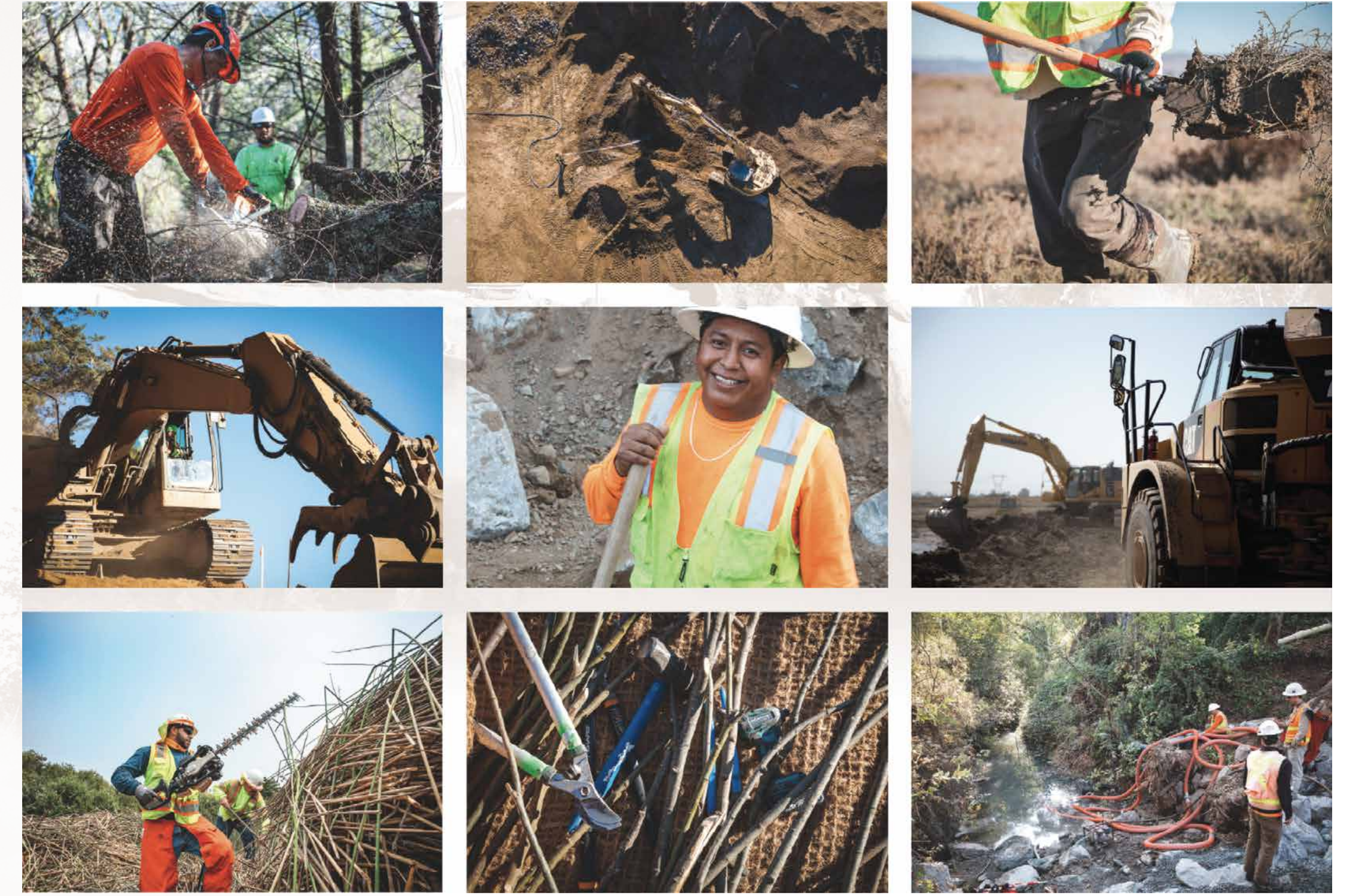
Funding for restoration projects is increasing exponentially, and the need for restoration trade workers is increasing along with it.

It is on the ground where impacts to species and habitats occur, yet currently there is no specialized training to give workers the environmental understanding they need to work appropriately in sensitive habitats. Untrained crews can result in habitat degradation, species mortality, and destruction of cultural artifacts.

While many workforce training programs give basic tool skills and work experience, there are none that provide the specific skills and knowledge needed for restoration trade work.

ESTABLISHING A TRAINED ECOLOGICAL WORKFORCE.

The Ecological Workforce Initiative is creating standardized environmental compliance training for the laborers, equipment operators and other crew members who implement environmental restoration projects. Our aim is to assure that on-the-ground workers are properly equipped with the information they need so that species and habitats are protected, permit restrictions are adhered to, and environmental project goals are achieved.

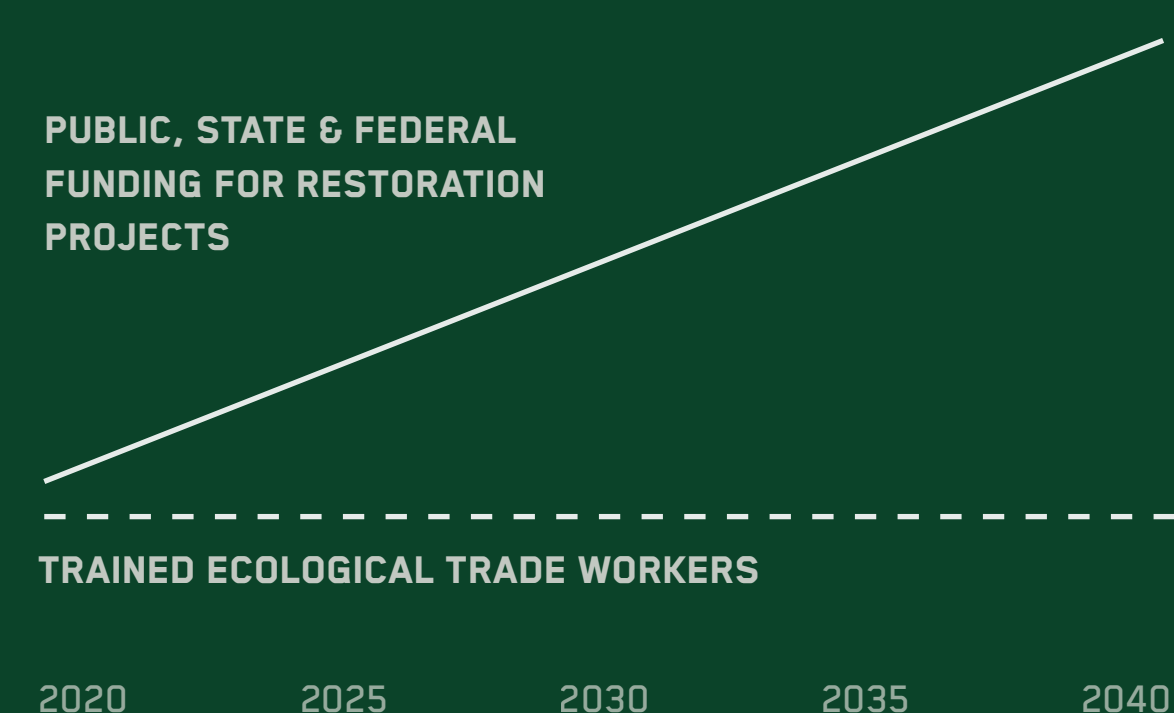


IMPACT OF A TRAINED WORKFORCE.

- 1) Improve permit compliance, project outcomes, and pace and scale.
- 2) Establish trust between agencies and workforce enabling Cutting the Green Tape.
- 3) Create inclusive pathways to living wage jobs for all members of our community.

RESTORATION FUNDING/ WORKFORCE CHASM

There is currently no standardized training for on-the-ground restoration workers.



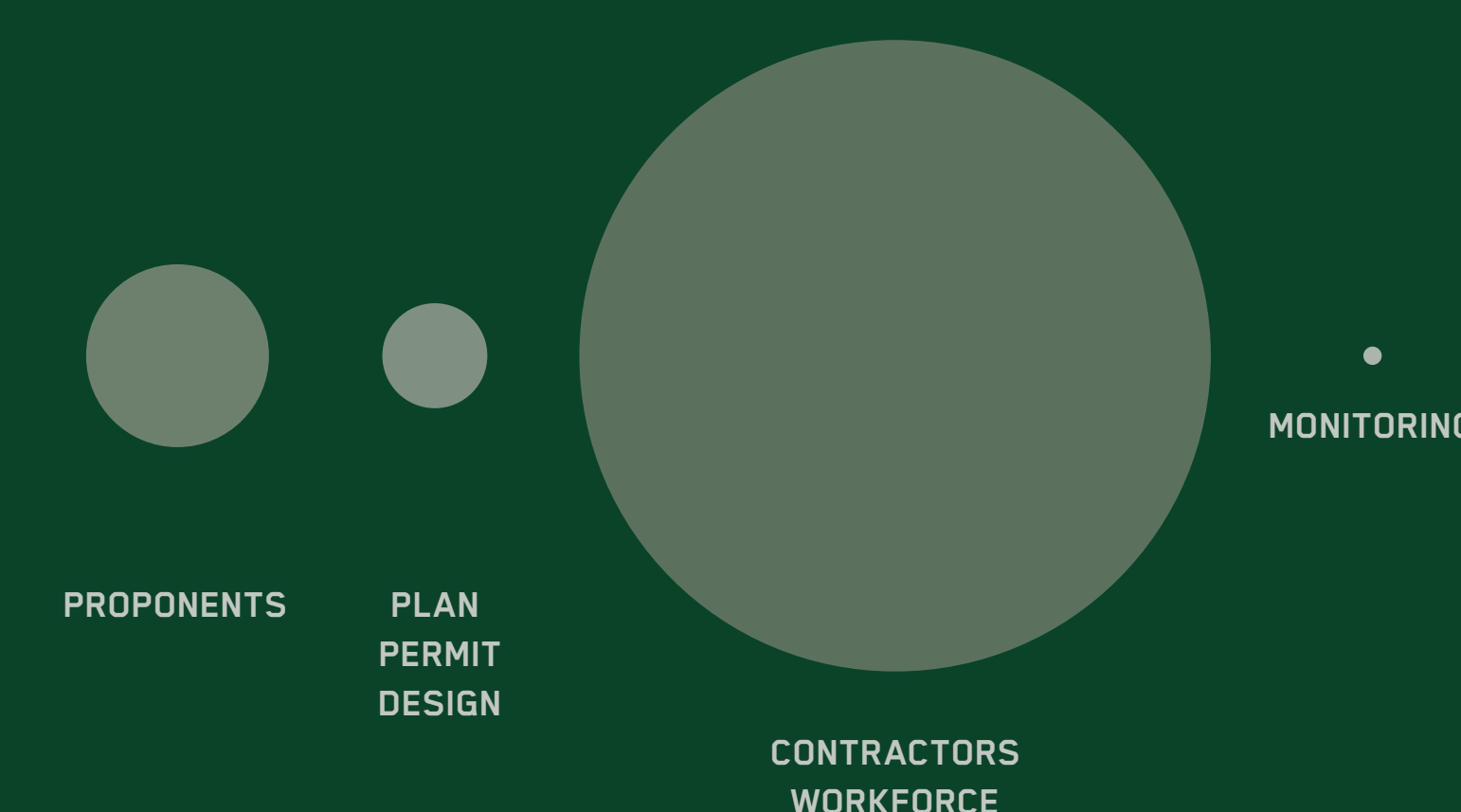
RESTORATION ECONOMY

Over 40% of restoration project funding goes into the pockets of the workers on the ground.



RESTORATION UNIVERSE

Relative funding and jobs in each phase of a project.



WORKFORCE IS AT THE CENTER

A trained workforce improves both positive ecological outcomes and builds healthy economies for our communities.

