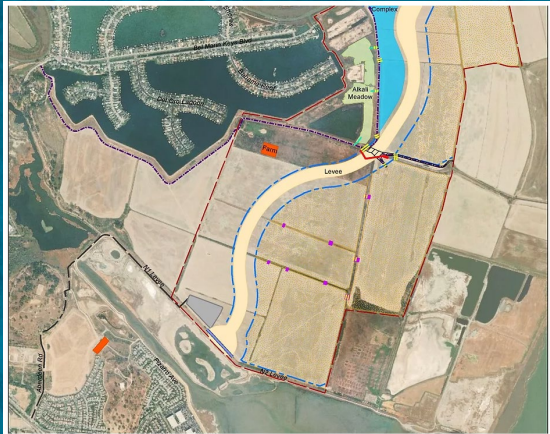


Bel Marin Keys Wetland Restoration Project

North Bay Watershed Association Board Meeting
October 7, 2022

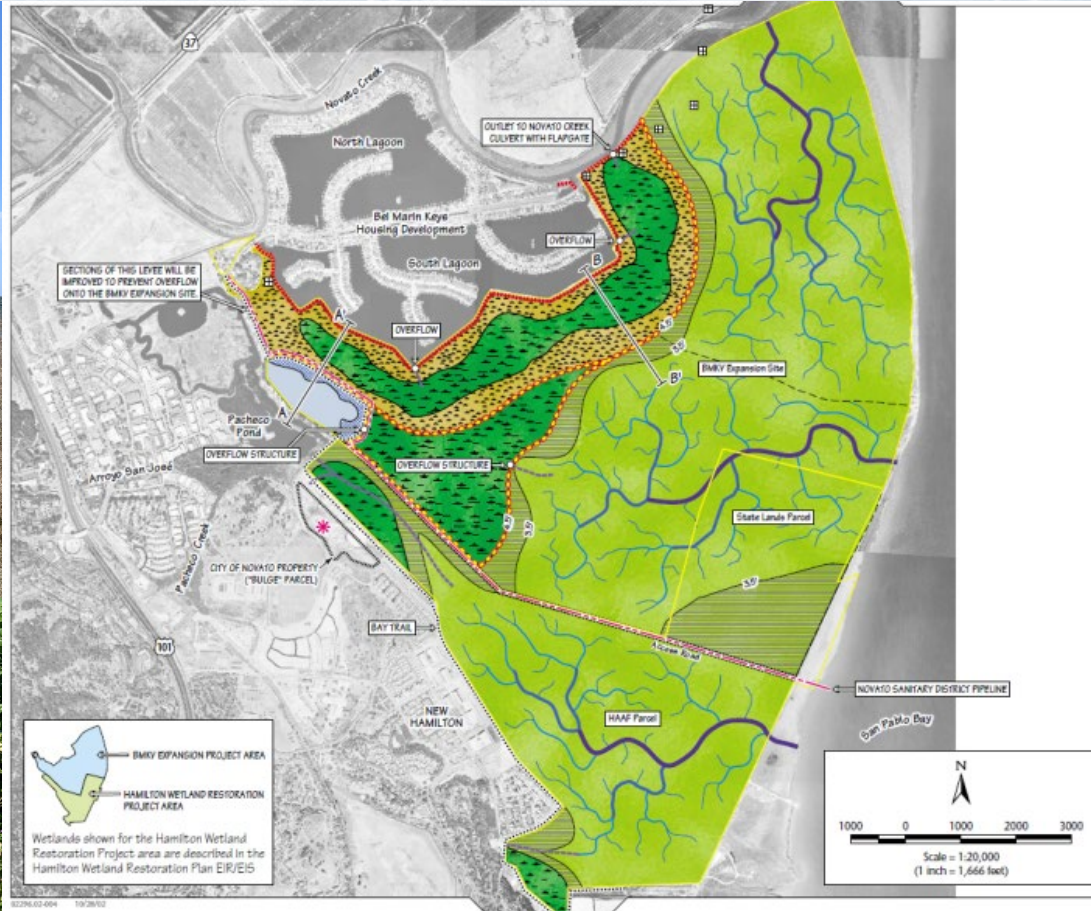


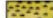




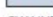












Jessica Davenport, Deputy Program Manager





Figure 3-5
Bel Marin Keys Restoration
Revised Alternative 2 at Maturity



- Legend**
- HABITAT TYPES**
-  Upland Transition
 -  Freshwater Emergent Wetland
 -  Seasonal Wetland
 -  High Transitional Marsh
 -  Tidal Salt Marsh
 -  Open Water
- CHANNEL ORDER**
-  Primary channels
 -  Secondary channels
 -  Tertiary channels
 -  Small branches
 -  Sub-basin Boundary
- INFRASTRUCTURE**
-  Parcel Boundary (see inset)
 -  Overflow Channel and Structure
 -  New Levee
 -  Improved Levee
 -  Existing Levee
 -  Bay Trail
 -  Power Tower
 -  Novato Sanitary District Pipeline
 -  Interpretive Center (not part of federal project; access area adjacent, not shown)
- Notes:**
- Vertical elevations are relevant to NGVD 1929.
Sections of the levee north of Pacheco Pond will be improved to prevent overflow onto the BMKY expansion site.
See Figure 3-6 for cross sections A-A' and B-B'.



02/29/03 004 10/20/02



View of Hamilton Wetlands and Bel Marin Keys Unit V from Reservoir Hill



Bel Marin Keys Unit V



Drone footage of Bel Marin Keys Unit V new setback levee - Haley & Aldrich, July 2022



Bel Marin Keys Unit V



Tour group along the Bay Trail by Hamilton Wetlands

Thank you



Coastal
Conservancy

STATE of CALIFORNIA