

CREATING A RECOGNIZED AND RESPECTED ECOLOGICAL WORKFORCE

SALLY BOLGER, DIRECTOR
ECOLOGICAL WORKFORCE INITIATIVE





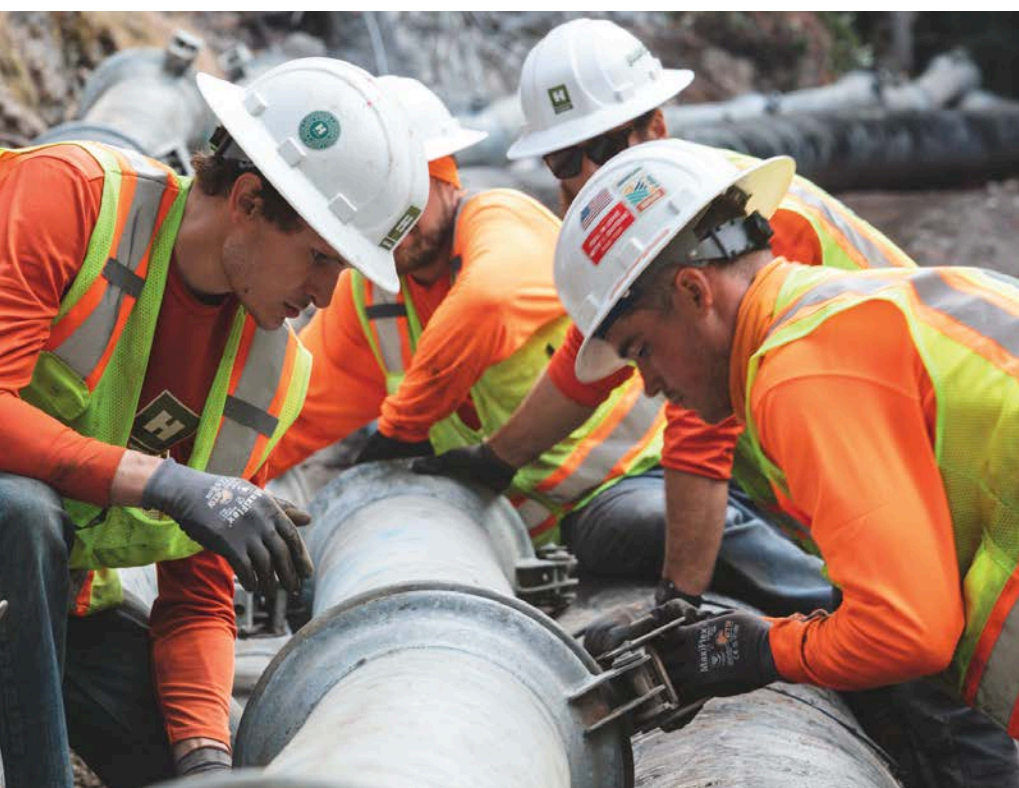
ECOLOGICAL WORKFORCE INITIATIVE

Increasing the pace, scale, and quality of environmental restoration by building a highly trained ecological workforce.

Improve Project Outcomes, Permit Compliance & Pace of Restoration Projects

Establish Trust Between Agencies & Workforce, Enabling Cutting Green Tape

Create Inclusive Pathways to Living Wage Jobs



WHO IS THE ECOLOGICAL WORKFORCE

Laborers and Equipment Operators – the folks on the ground – who implement restoration and mitigation projects for the health of our environment

Work in proximity to Sensitive Habitats and Cultural Resources

Educated in the purposes of restoration

Knowledgeable about permits that may be encountered

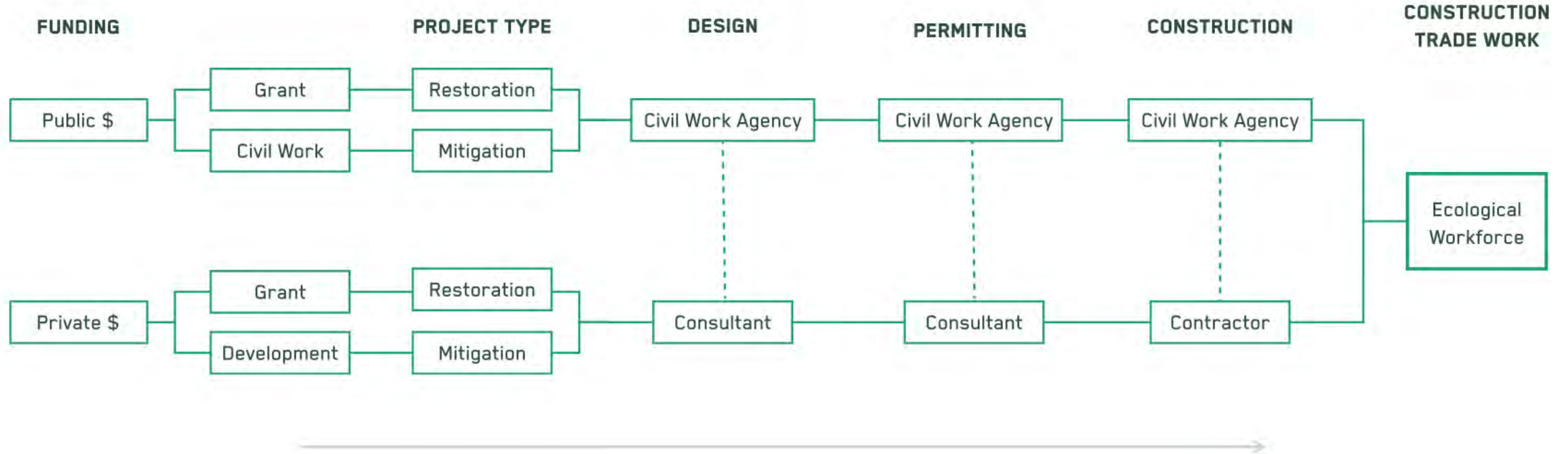
Capable of basic endangered species identification

Understand reasons why regulations must be adhered to



WORKFORCE IS THE COMMON DENOMINATOR

Industry Structure



CURRENTLY THERE IS NO STANDARDIZED TRAINING FOR ECOLOGICAL RESTORATION WORKERS

We must increase the pace and scale of restoration projects locally, nationally, and globally.

Billions of dollars in federal, State, and local resources are being invested in environmental protection projects.

The Restoration Industry is growing exponentially and the number of restoration jobs is growing along with it.

Level of Training varies dramatically between employers.



THE ECOLOGICAL WORKFORCE TRAINING PROGRAM IS

A certification program giving laborers and equipment operators the skills and knowledge they need to work appropriately in sensitive habitats within permitting constraints.

Ecological Workers are not interchangeable with traditional civil construction laborers. Working in sensitive habitats requires specialized skills and knowledge.

Is an enhancement to existing training programs, delivering specialized restoration knowledge in a short amount of time.

The training creates pathways to lifetime, living wage careers without the need for higher education or high level english language proficiency.

The training will assure there are enough trained workers to accomplish the scale of restoration projects.



HOW WE ARE DIFFERENT

This initiative is led by members of the Ecological Restoration and Mitigation Industry.

We focus on the trade workers - laborers/equipment operators who until now have been seen as interchangeable with traditional construction.

Able to directly connect graduates to job sources.

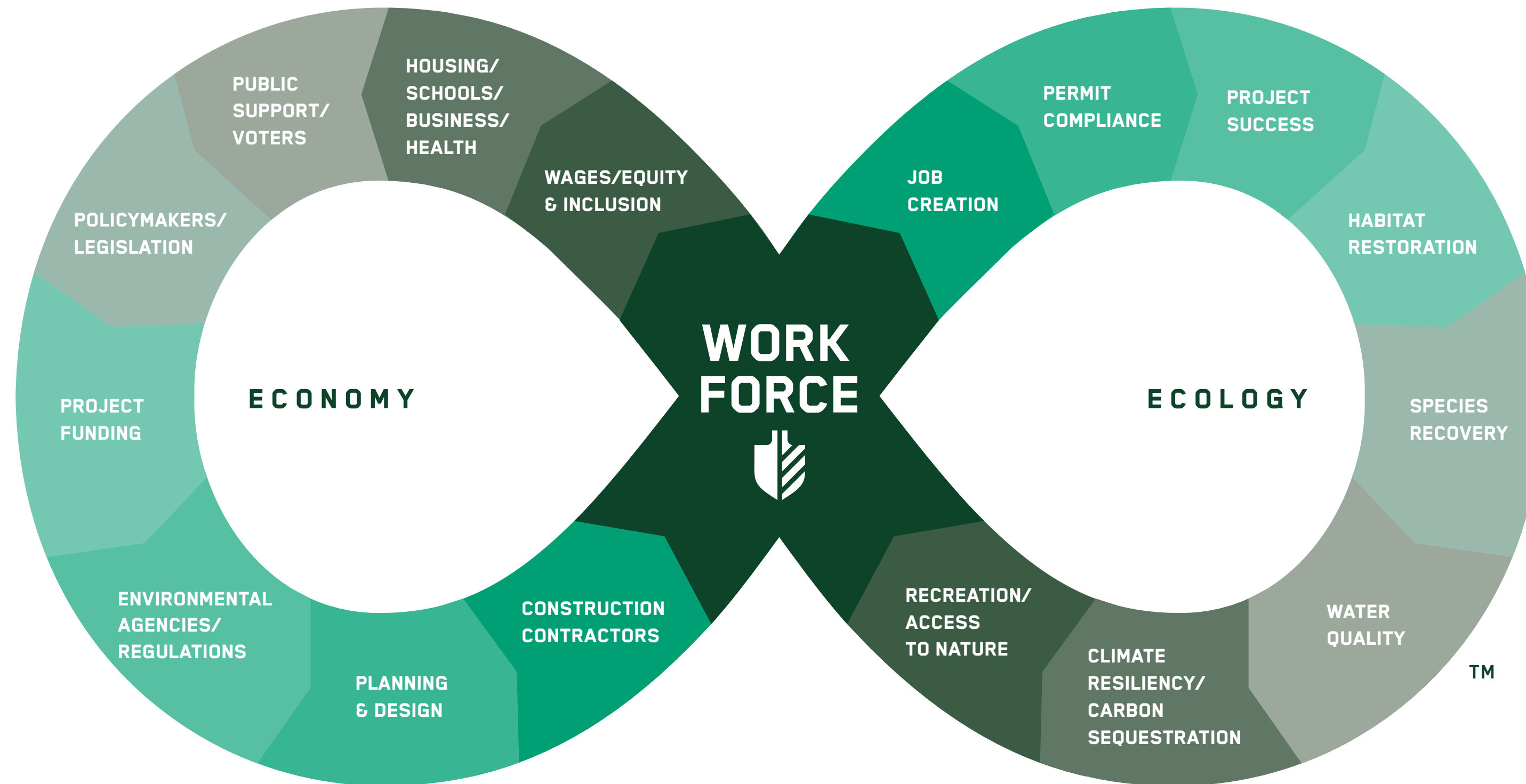
The program highlights the economic impact of restoration and mitigation projects, so that public funding for these projects is recognized as both an ecological benefit + direct economic benefit to workers and their families.



IMPACTS OF IMPLEMENTATION



ECOLOGICAL WORKFORCE IS AT THE CENTER OF ECONOMIC AND ECOLOGICAL UPLIFT



INVESTING IN RESTORATION IS INVESTING IN OUR COMMUNITIES



IMPACTS OF IMPLEMENTATION

LABORERS

Focus is on trade workers – laborers and equipment operators

Lifetime, Living-wage careers without the need for higher-education or high-level English language proficiency

A robust job market with expanding employment needs

Fulfilling, prideful work in the outdoors

Opportunities for advancement within the trades.





IMPACTS OF IMPLEMENTATION

RESTORATION INDUSTRY

Meet growing restoration employment needs and solving the current major obstacle to project implementation and success.





IMPACTS OF IMPLEMENTATION

RESTORATION OUTCOMES

Better project outcomes because the workforce on the ground understands how to work appropriately in the sensitive habitats of the project.



IMPACTS OF IMPLEMENTATION

FUNDERS/ GRANTMAKERS

Creates a metric that can be used to qualify bidders, e.g. that every worker on a job site has to have the Ecological Workforce Training Certification.



IMPACTS OF IMPLEMENTATION

REGULATORS

Trust and respect between regulators and workforce allowing rationalization of permitting requirements.





IMPACTS OF IMPLEMENTATION

POLITICS

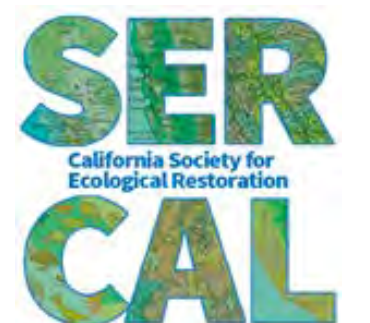
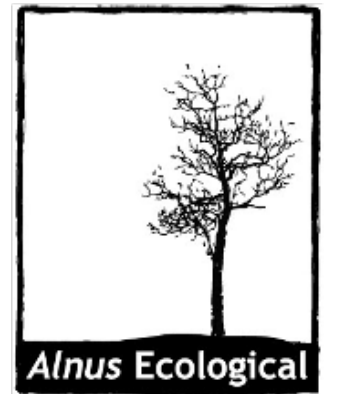
Creates a constituency that understands restoration and mitigation projects are a source of good jobs.

Decouples “conservative” from “liberal.” It meets both agendas – creating jobs where folks make a living and can raise a family at the same time as protecting the environment.

ACCOMPLISHMENTS

The ecological workforce initiative has trained over 250 restoration laborers, equipment operators, and workers at all levels of the restoration industry, in partnership with the workforce development boards, local conservation corps and private companies. The training, available in both Spanish and English, consists of 10 hours of classroom instruction supplemented by work site-specific tailgate trainings and mentoring.

Classroom education includes curriculum on basic ecological knowledge and restoration project types, federal and California resource agencies, the environmental concerns on which they focus, and how to work appropriately within permitting constraints.





[ECOLOGICALWORKFORCE.ORG](http://ecologicalworkforce.org)