



# MARIN WILDFIRE PREVENTION AUTHORITY

**Earth, Wind, Fire, and Water:** A paradigm shift that calls for a new proactive collaboration to protect our communities from wildfire by strategically restoring and managing our watershed lands and resources in the face of climate change



# MARIN WILDFIRE PREVENTION AUTHORITY

- Mark Brown – Introduction
- Executive Officer – Marin Wildfire Prevention Authority
- Retired Deputy Fire Chief – Marin County Fire Department (30 years of service)
- Operations Section Chief – CAL FIRE Incident Management Teams 3 and 4 (15 years)



# MARIN WILDFIRE PREVENTION AUTHORITY

Today's Presentation Outline:

- MWPA History/Background
- Status of North Bay Wildfire Prevention Work
- Challenges Ahead
- Collaboration Opportunities



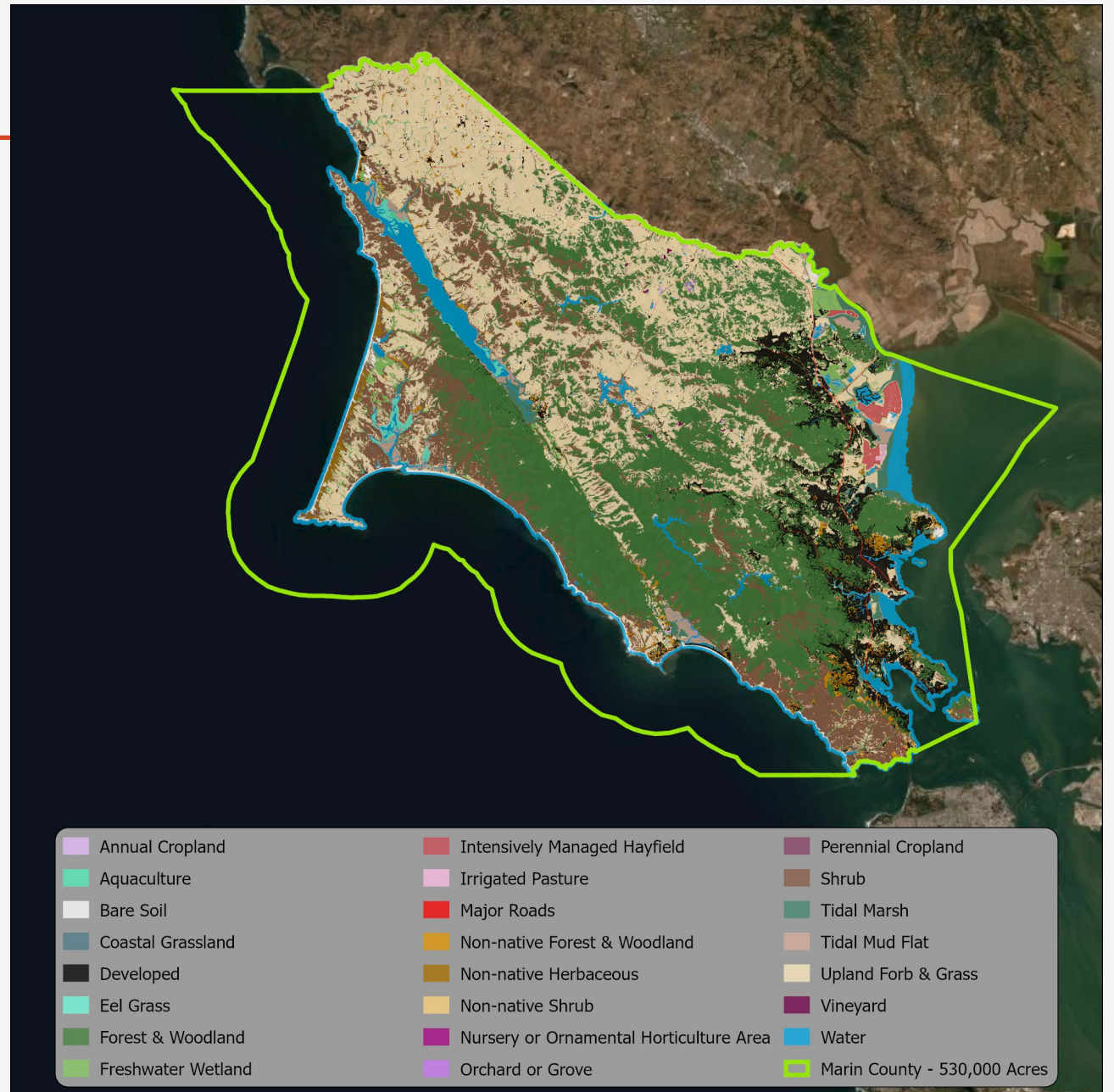
**MARIN WILDFIRE  
PREVENTION AUTHORITY**

## MWPA History/Background

# Marin Vegetation Profile

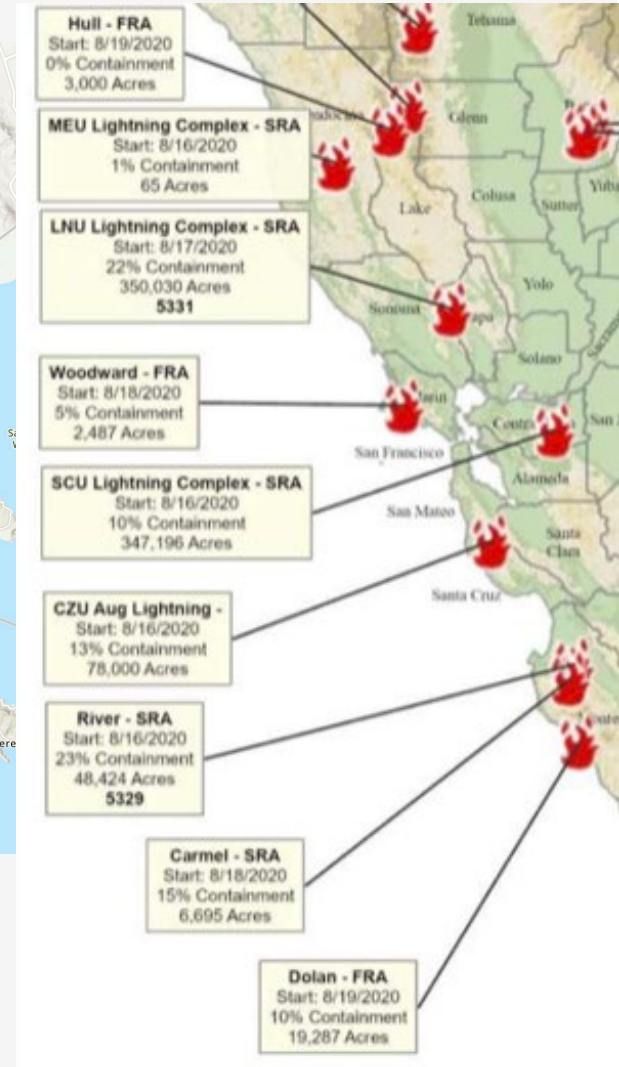
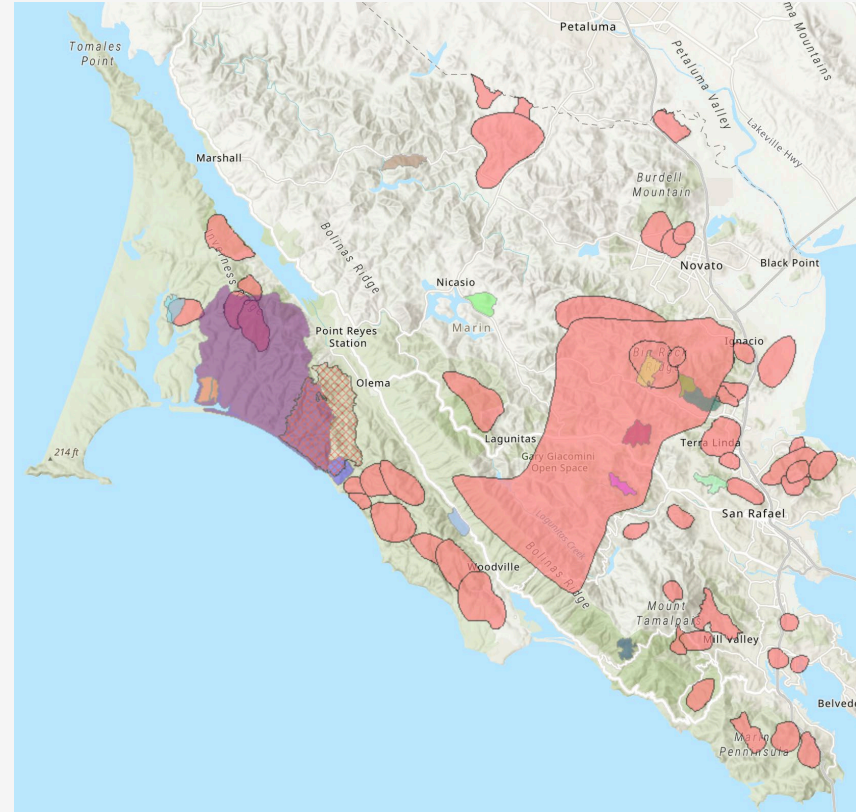
---

- Mosaic of forest, shrub and grassland vegetation types
- All flammable
- Fire Hazards Exacerbated by SOD, Drought
- **Nearly all communities are within the wildland urban interface**



# Fire History of Marin County

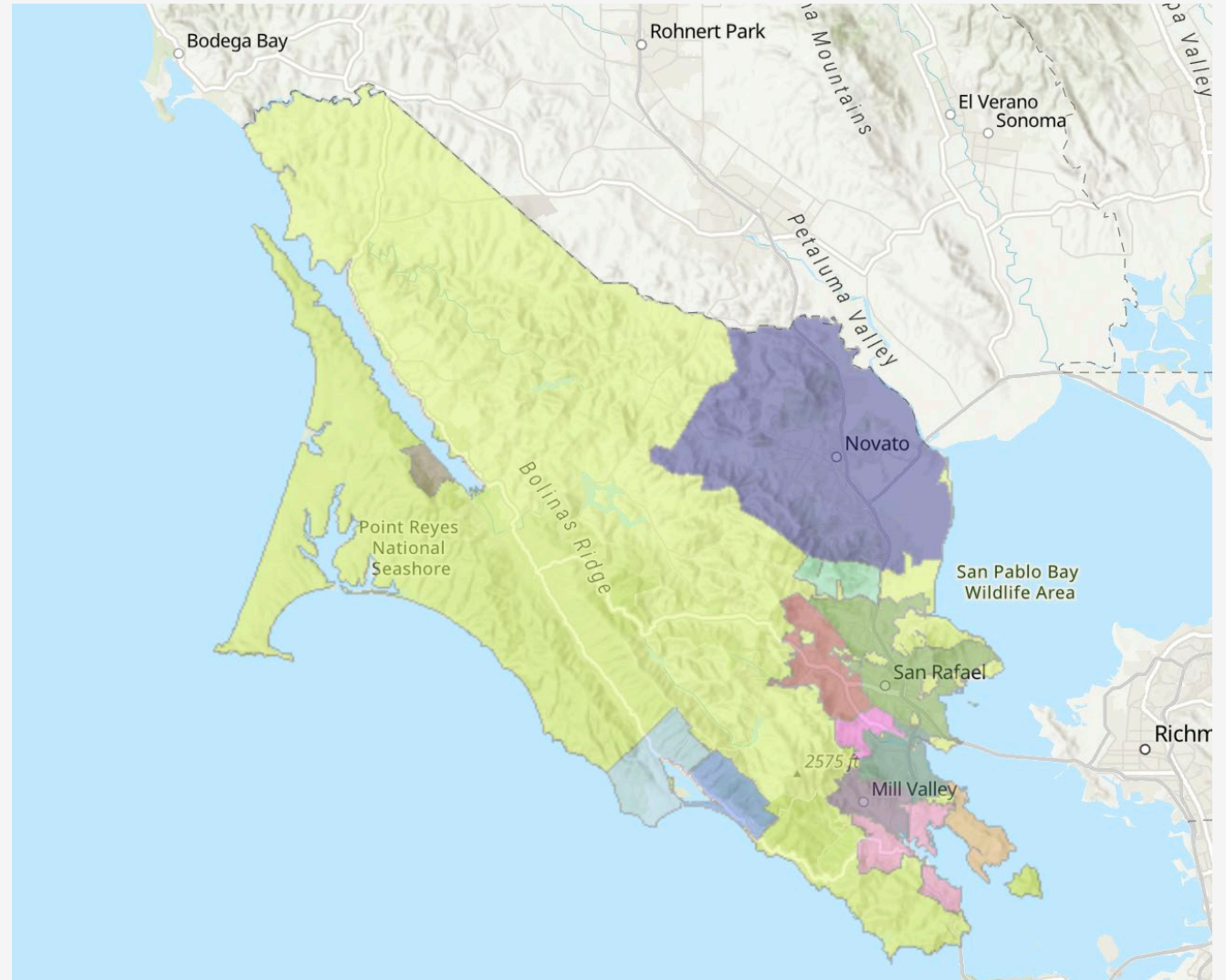
- Marin has a significant history of wildfires
- Neighboring communities and counties have been severely damaged by catastrophic fires over the last decade
- Any of our communities could be next. We are all vulnerable



# Marin Fire Agencies

---

- 19 Independent Fire Agencies responsible for Fire Prevention and Suppression
- Fire knows no jurisdictional boundaries
- Compelling need for fire agencies to work together to address common threats, mutual interests



# 2017/18 County and Civic Leaders Commission a Fact-Finding Report

---

- Marin County Board of Supervisors commissioned a multidisciplinary team to **identify and report what lessons could be learned from the 2017 North Bay Fire Siege**
- **Collaborative effort by key stakeholders** including the Fire Chiefs, City Managers, County Administrators, County Supervisors and Law Enforcement
- **Key recommendation: Fire Agencies and municipalities need to coalesce under a County wide JPA with ongoing funding to reduce risk of catastrophic event**



## Lessons Learned 2017 North Bay Fire Siege September 2018

Prepared By:  
Marin County Fire Department  
P.O. Box 518, Woodacre, CA 94973  
[www.marincountyfire.org](http://www.marincountyfire.org)





# 2018/19 Civil Grand Jury Recommends Formation of Wildfire Prevention JPA

---

- Civil Grand Jury Report\* Affirmed Findings & Recommendations of Lessons Learned Report
- Recommended the formation of a County Wildfire Prevention Agency, suggested sources of funding, and that the question be put before Marin County Voters
- Civic leaders and Fire Chiefs campaigned Cities/Town Councils/Fire Districts for formation of a JPA to be funded by 1% parcel tax-17 of 19 towns agreed
- **Measure C – Marin Wildfire Prevention Authority received 70.8% voters' support**

2018–2019 MARIN COUNTY CIVIL GRAND JURY

## Wildfire Preparedness A New Approach

Report Date: April 18, 2019

Public Release Date: April 25, 2019





**MARIN WILDFIRE  
PREVENTION AUTHORITY**

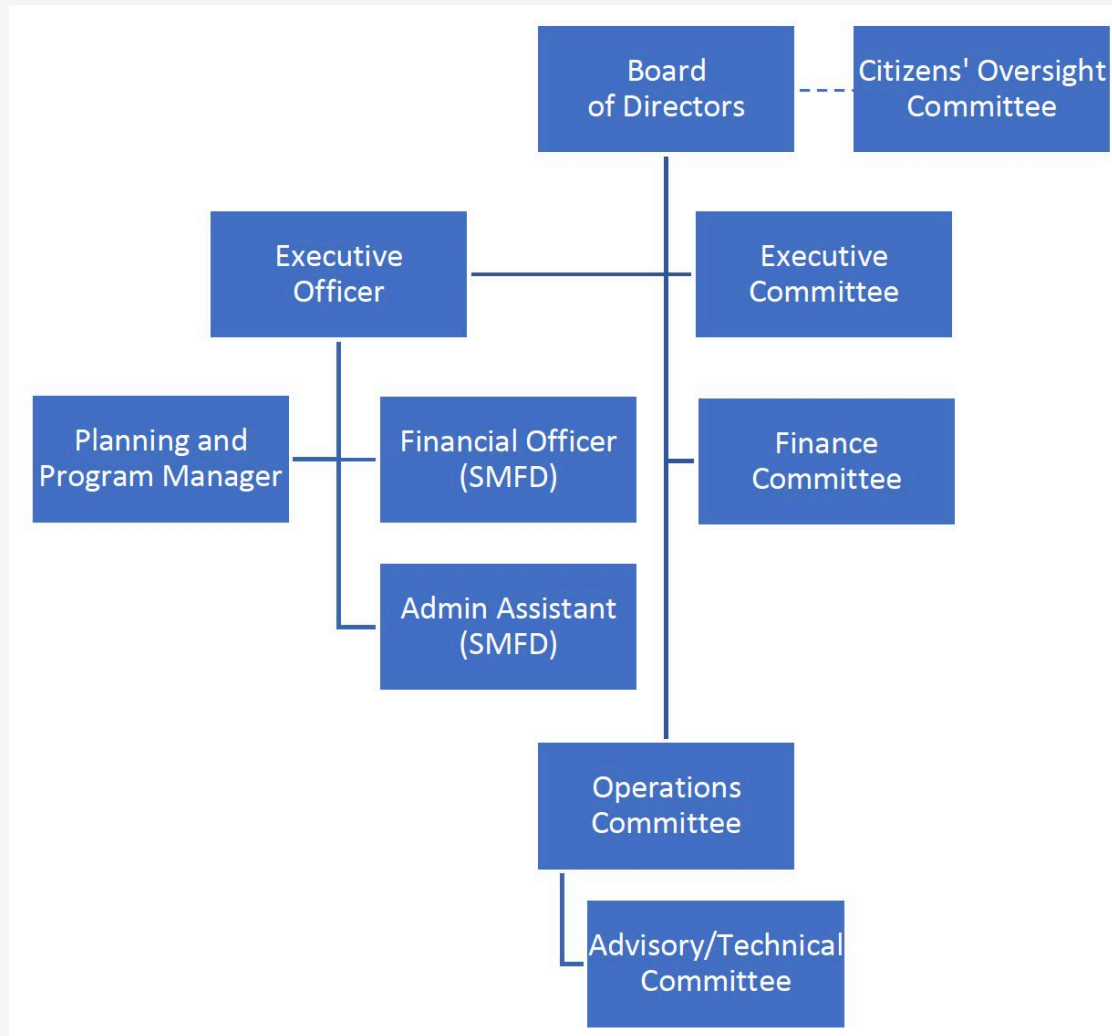
## Status of North Bay Wildfire Prevention Work

# 2020-Marin Wildfire Prevention Authority Programs/Investments

- MWPA is a 17 Member JPA
- 10 year term - \$20 MM per year
- Wildfire Detection/Evacuation planning and improvements
- Vegetation Management
- Public Education – FIRESafe Marin
- Defensible Space, Home Hardening
- Evacuations Route Improvements

Program Area			% of Funds
JPA Core	Wildfire Detection & Evacuation Program Improvements		60%
	Vegetation Management / Fire hazard reduction		
	Grants Management		
	Public Education – FIRESafe Marin		
<b>Defensible Space Evaluations – Home Hardening</b> With the ability for an agency to administer vs JPA			20%
<b>Community Level Wildfire Prevention Mitigation</b> Local jurisdiction fire prevention issues with no funding Enhanced fire patrols for problem areas, additional fire hazard reduction work, evac route parking issues			20%

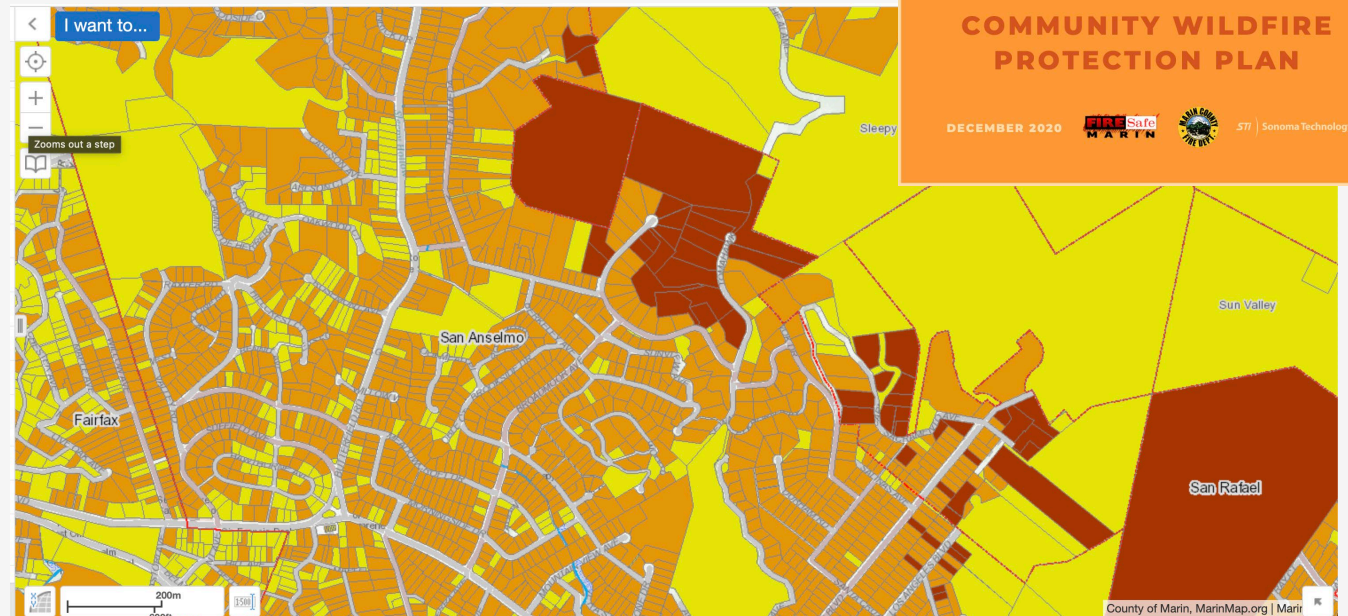
# MWPA ORGANIZATION and FUNDAMENTALS



- A **Joint Powers Agreement** clearly defines the JPAs authorities to operate, act and invest in wildfire prevention activities
- Operated "**From the Ground Up**"
- All sub committees' actions are defined by written **Bylaws**
- All Actions and Investments are **monitored by a Citizens' Oversight Committee**
- We are now one year old

# Marin County Community Wildfire Prevention Plan

- **Marin County CWPP** updated 2021 **provides the framework for MWPA's annual work plans and investments**
- Used up to date LiDAR data funded by a 2019 federal grant
- Conducted a **Fire Risk Assessment for every parcel and home** in Marin
- Identifies **critical hazards & investments needed to reduce risks**



# Summary

---

Sequence of Events brought **Marin** Citizens to a "**Tipping Point**"

- **Catastrophic fires in neighboring communities**
- **Lessons Learned Report from 2017 Fires**
- **Civil Grand Jury Report 2018/19 - Coalesce & work together under JPA**
- **Citizens support Marin Measure C 2020**
- **Marin Wildfire Prevention JPA 2020-2030.**



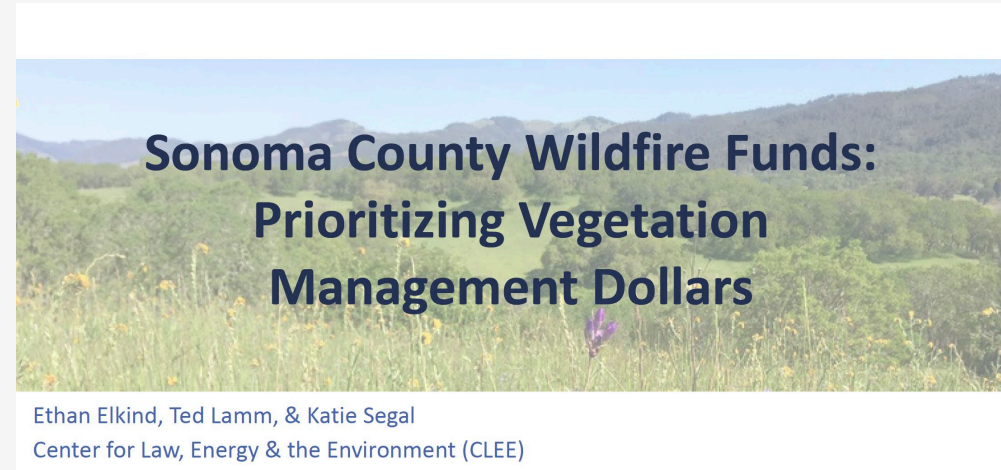
## SUMMARY- 2020/22 Priorities

---

- **Strategic Planning** with **Goals, Objectives, Metrics and Monitoring**
- Aggressive **Public Education Program**- FIRESafe Marin
- **Home hardening**
- **D Space Clearing** supported by **chipper days**
- County Wide **Evacuation Route Hazard Assessment and Clearing**
- **Fuel reduction** projects in open spaces **near homes**
- **Shaded fuel breaks** along the WUI boundary




# Sonoma County PG&E Wildfire Funds – CLEE Report

- Centralizing Governance and Stakeholder Coordination
- Community Outreach and Education
- Immediate Vegetation Management Activities
- Data, Planning and Mapping
- Long-term Financial Stability
- Labor and Workforce Development



Ethan Elkind, Ted Lamm, & Katie Segal  
Center for Law, Energy & the Environment (CLEE)  
UC Berkeley School of Law  
Ma

## 1. Centralizing Governance & Stakeholder Coordination

<p><u>Goals</u></p> <ul style="list-style-type: none"><li>• Coordinate immediate projects</li><li>• Administer funds</li><li>• Spearhead outreach</li><li>• Streamline permitting</li><li>• Compile research efforts</li><li>• Lead and/or support grant efforts</li></ul>	<p><u>3 potential pathways</u></p> <ul style="list-style-type: none"><li> County-based group</li><li> New governing entity</li><li> Joint-powers authority or public-private community development corporation</li></ul>
--	--

Berkeley Law | Center for Law, Energy, & the Environment



# Napa County – Five Year Plan

---

- **Napa County working in conjunction with Napa Community Firewise Foundation approved the Community Wildfire Prevention Plan**
- **Earmarks \$42 million over 5 years for Wildfire Preparedness fuels management, community education, wildfire response support, and critical infrastructure protection**
- **Supported by the wine industry producers and farmers, including the trade association Napa Valley Vintners**

# With Initial Progress, Now We Generate Momentum and Engagement

---

- **Identify what the public really wants and will support**
- **Elected and Appointed Officials at the Federal, State and Local Levels**
- **Community change leaders in social, environmental, economic fields**
- **Fire Chiefs, FIRESafe Marin, Fire Safe Sonoma, City Councils, Board of Supervisors, Water/Sanitation/Flood Control Agencies**
- **Establish Partnerships/Collaborations that achieve efficiencies and multiple benefits for wildfire preparedness, drought response, and watershed protection**
- **Environmental activists, UC Cooperative Extension**



**MARIN WILDFIRE  
PREVENTION AUTHORITY**

## Challenges Ahead

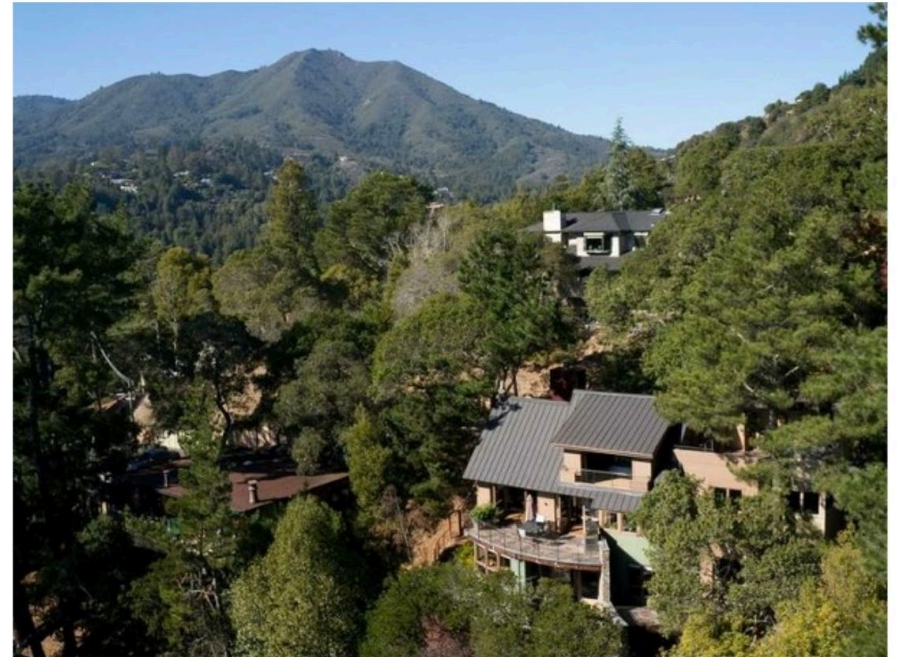
# What We Need Going Forward

---

- **Support of the Environmental Community** and key partners to implement critical projects (e.g. ESP partnership in Marin County)
- Establish key partnerships/collaborations to address the link between wildfire preparedness/drought response/watershed protection
- Work across jurisdictions to ensure efficiency in our planning and spending of monies devoted to addressing the impacts of climate change.



## **ECOLOGICALLY SOUND PRACTICES FOR VEGETATION MANAGEMENT**

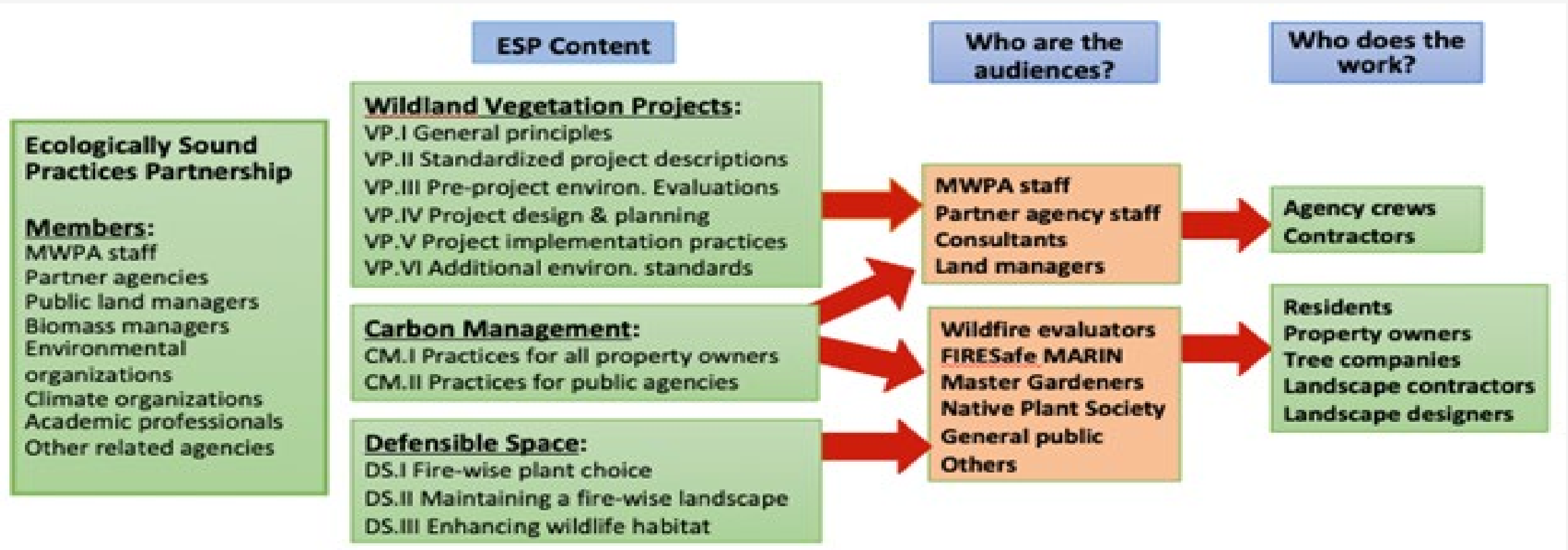


Marin Wildfire Prevention Authority  
ESP Partnership

# Environmentally Sound Practices Partnership

## ECOLOGICALLY SOUND PRACTICES OVERVIEW

Marin Wildfire Prevention Authority / ESP Partnership



# What We Need for Wildfire Prevention?

---

- **Residents to take personal responsibility to be informed, prepared and to reduce hazards around their homes**
- **Good luck and the time necessary to substantially reduce hazards**

What we need to do to address climate change and link our efforts?

---

- **A recognition that we are facing the new normal....droughts, floods, fires and their impacts are unpredictable in their extent, but predictable in that they will happen.**
- **A paradigm shift where we link our wildfire prevention activities with drought response and watershed protection to have a focused approach to address the dynamic and emerging impacts of climate change.**



**MARIN WILDFIRE  
PREVENTION AUTHORITY**

Collaboration Opportunities



How can we work and collaborate together? Our Past.....

---

- **Collaborate on areas of mutual interest and concern...regulatory/provision of services.**
- **Tended to focus in our own service area silos through regional/local partnerships (e.g. Bay Area IRWMP; MTC, ABAG, etc)**
- **Focus on singular impacts of climate change through our own agency lense (drought, fire, floods, ghg emissions, etc.)**
- **Lack of integration at all government levels**

# How can we work and collaborate together? Our Future.....

---

## **We must acknowledge and recognize that:**

- **First and foremost, there is a new paradigm before us.**
- **our focus must shift to making the link between the impacts of climate change and how those linkages require new collaborations.**
- **Federal and State government are looking for the answers that we at the local level can provide that are scalable across the state/nation**
- **Our regional focus must expand and make linkages between what exists today at the regional/local level and what's needed in the future to address our new paradigm (e.g. Bay Area IRWMP; NBWA, MTC, ABAG, BAWAC, North Bay Water Reuse Authority, BayCAN, etc)**
- **A shift in focus is needed from working on singular impacts of climate change to one of integrating our work to tackle the range of impacts (drought, fire, floods, heat, ghg emissions, etc.)**

# Ideas for Collaboration

---

- **Large Watershed/Landscape Scale Forest Health Projects that protect our regional water supply, prepare us for wildfire, and promote biological diversity**
- **Collaborative outreach/education on the benefits of Fire-Smart/Drought-Smart landscaping and that they are essentially the same**
- **Managing our lands for wildfire/drought are essential for water and power system reliability during a major wildfire event**
- **Advocate for Bond Funding/Federal Infrastructure Funding for projects/programs that make the link between wildfire preparedness/drought/watershed protection (Climate Change Response)**

## Idea for Collaboration – State Bond Funding/Federal Funding

---

- **SB 45/AB 1500 – Up to \$2.2 billion for wildfire prevention, drought, or other natural disaster prevention and community resilience from climate change impacts**
- **Federal Infrastructure Bill – \$1.2 Trillion for Transportation/Water/Power/Broadband/R&D including climate change**

# State Bond Funding

---

- **SB 45/AB 1500 identify funding for the following:**
- **Pre-Hazard Mitigation including projects/programs to address wildfire/flooding/drought**
- **Forest Health/Forest Restoration including land conservation**
- **Regional and local collaboration and approaches,**
- **State Parks Preparedness**
- **Workforce Development to achieve state goals**



**MARIN WILDFIRE  
PREVENTION AUTHORITY**

Thank You!

Mark Brown

Executive Officer

Marin Wildfire Prevention Authority

[mbrown@marinwildfire.org](mailto:mbrown@marinwildfire.org)

415-246-0280