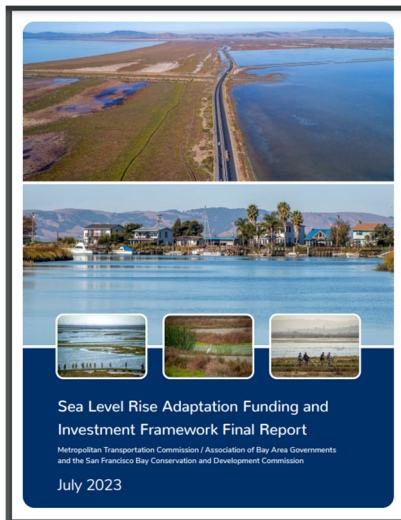


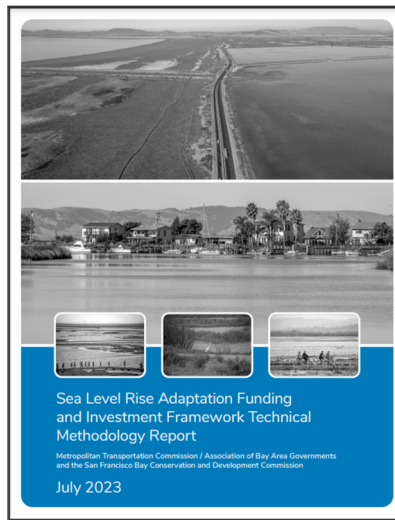
The Bay Area's \$110 Billion Dollar Climate Adaptation Cost through 2050

Reference Material - from the 12-1-23 SFEI presentation to the N. Bay Watershed Association

BCDC & MTC/ABAG collaboratively developed the [Sea Level Rise Adaptation Funding and Investment Framework](#) to inventory likely SLR adaptation actions in major local and regional planning efforts. The Framework estimates the **likely \$110 Billion dollar cost** of SLR adaptation projects to protect shoreline communities through 2050. It also estimates the potential local and regional revenue sources to address the funding gap between adaptation costs and likely state & federal funding. Here are links to the **three key documents** that should be on the desk of every North Bay agency, elected and community leader that cares about local climate adaptation.



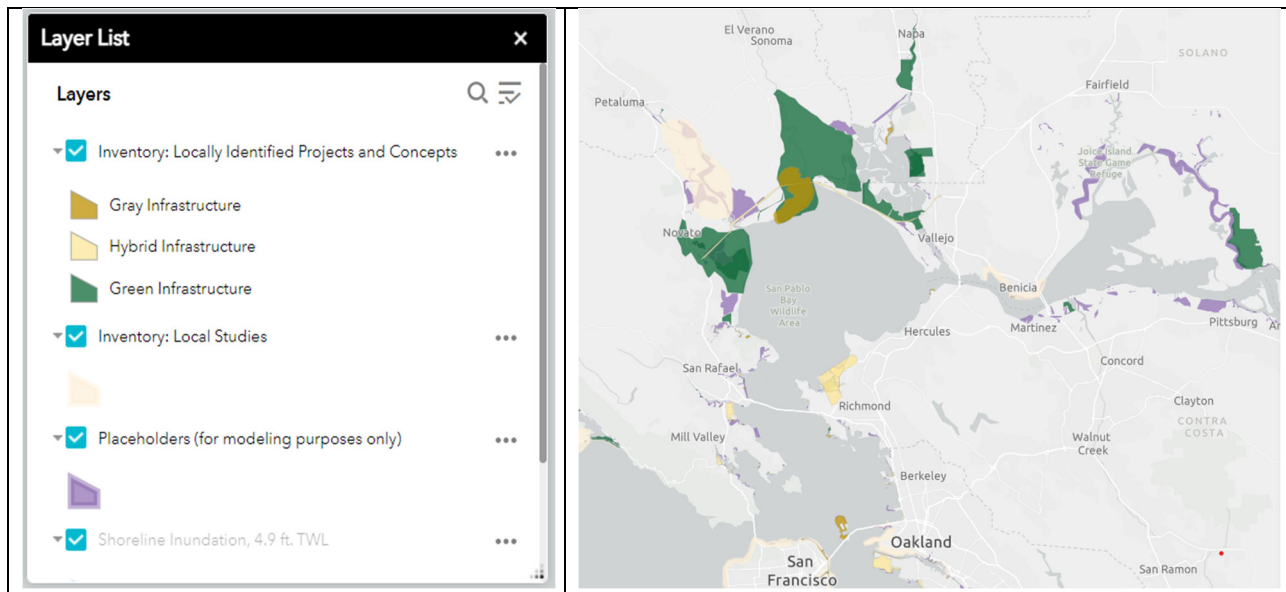
Report:
SLR Adaptation Funding & Investment



Technical Report:
Assumptions and Methods

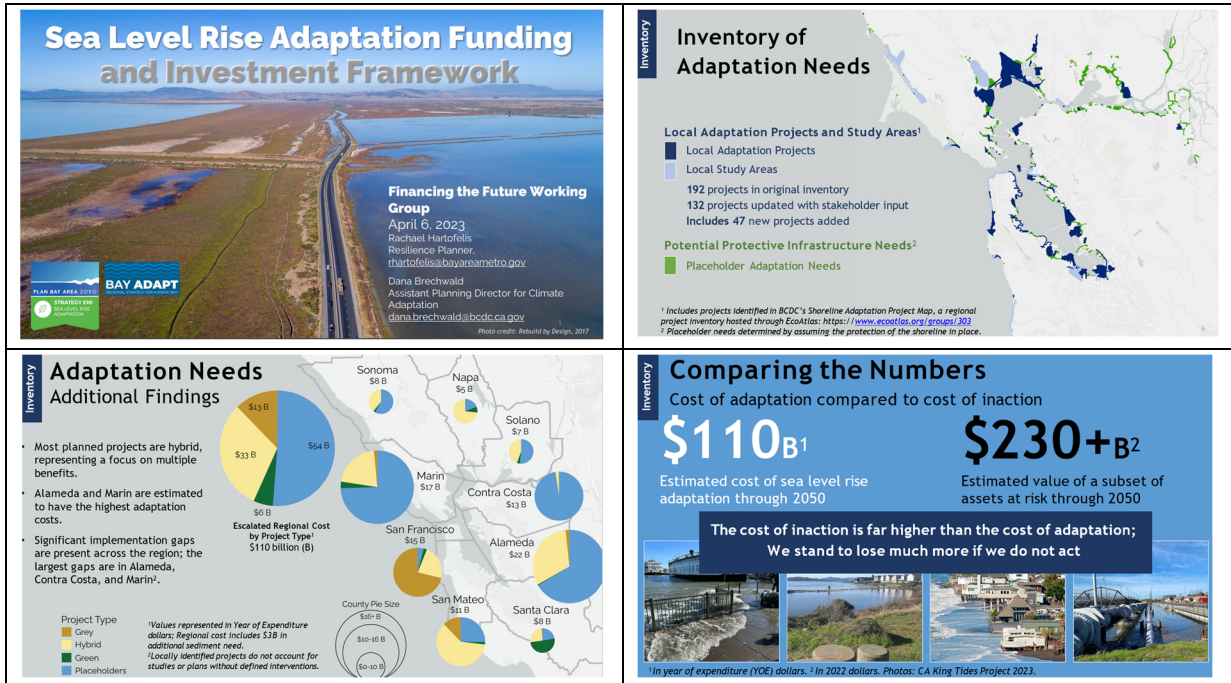
Inventory Map – Sea Level Rise Adaptation Funding and Investment Framework

This (BCDC & MTC/ABAG) map visualizes the inventory of planned SLR adaptation projects in the region **and** where new plans may be needed. It includes estimates to help identify the regional cost of SLR adaptation projects through 2050.

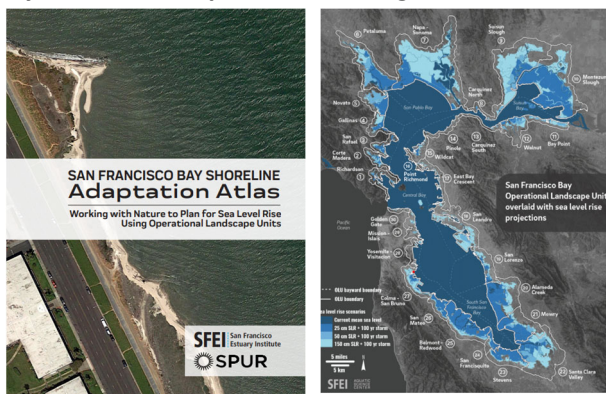


Background Material on the Bay Area SLR Adaptation Funding & Investment Framework

- **Cost Assumptions:** [Estimating Costs Spreadsheet](#): the estimated cost for different solution types
- **Revenue Assumptions:** [Existing Revenue Sources Spreadsheet](#): a resource of the full existing revenue sources identified, and the revenue assumptions used in the analysis.
- **3-Page Summary:** of the Report's conclusions
- **News Coverage:** Stories in the [S.F. Chronicle](#) and [S.J. Mercury News](#)
- **Slide Deck:** 15 Slides (from BCDC/MTC-ABAG), that summarizes the report. *(sample slides below)*

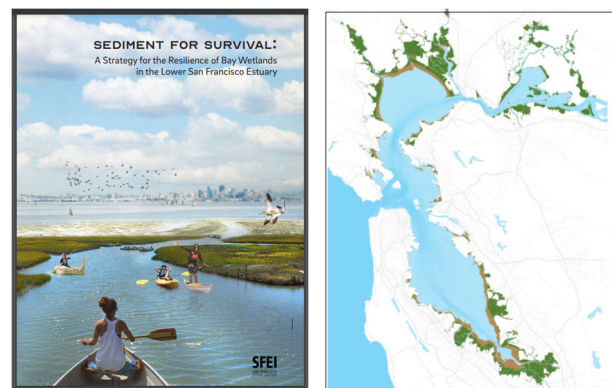


Related SFEI Reports - These two SFEI reports provide critical data and critical insights on SF Bay shoreline adaptation Planning



SF Bay Shoreline Adaptation Atlas

A comprehensive assessment of Bay shoreline ecological and urban data and maps, with green-gray and nature-based adaptation infrastructure options for 30 shoreline segments.



Sediment for Survival

An assessment of available natural sediment supply for Bay wetlands, and how much additional sediment may be needed and where it may be obtained under future climate scenarios.