



Watershed Resilience Program Implementation and Pilot Projects

Eric Tsai

Acting Division Manager, Division of
Planning

CA Department of Water Resources

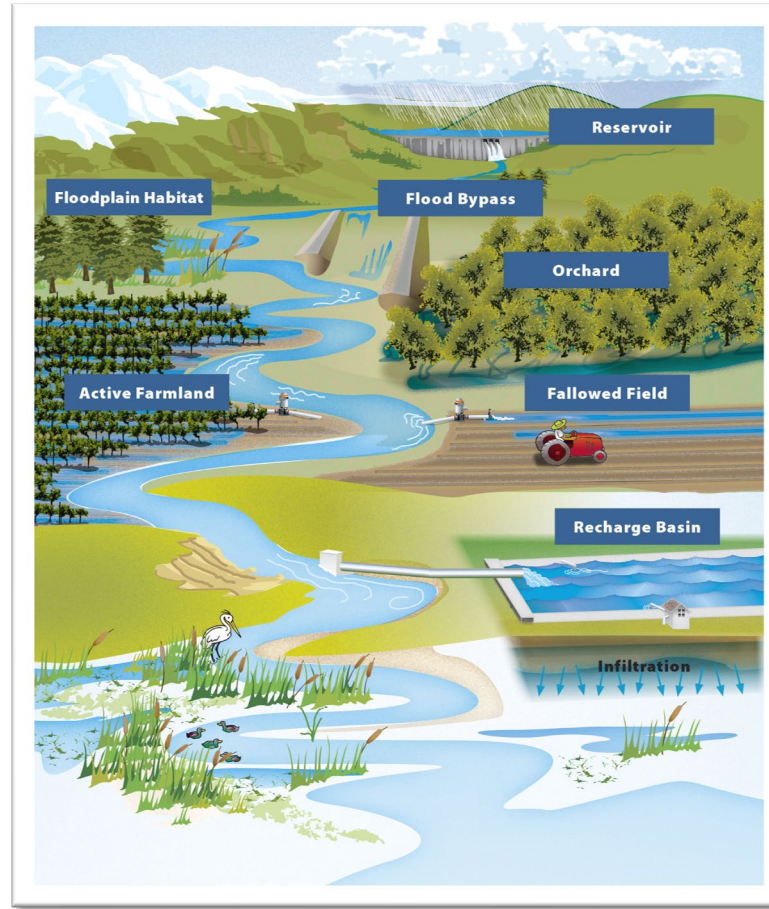
Eric.tsai@water.ca.gov

Translating the California Water Plan into Action

Climate Urgency



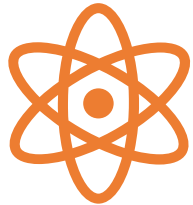
Watershed Resilience



Equity in Water Management



Watershed Resilience Program Intent and Outcomes



Program Intent

Empower local water leaders with the capacity to prepare for climate change impacts across water sectors at the watershed scale



Equity

Build and support inclusive and diverse watershed networks



Climate Science

Inform sound resilience planning with quantitative climate vulnerability and adaptation analysis

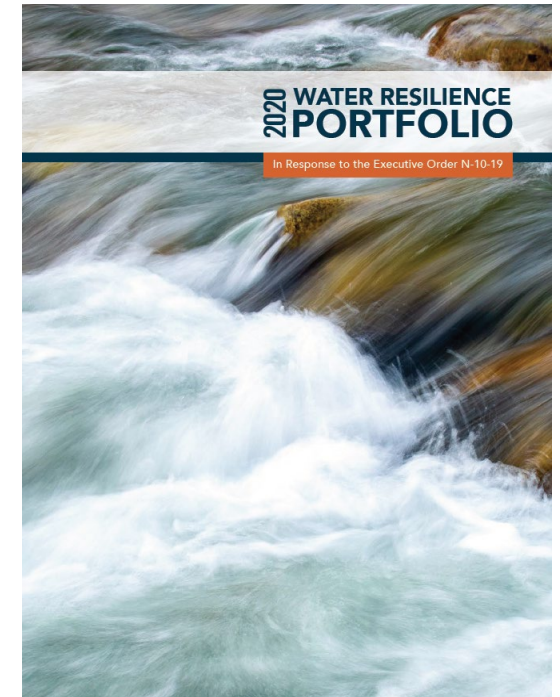


Scale

Incentivize planning on a hydrologically appropriate scale, from headwaters to groundwater basins

Statewide Vision for Watershed Resilience

- EO N-10-19 Principle - “Encourage **regional approaches** among water users sharing **watersheds**”
- Action 20 - Support groups and leaders in each of the state’s **regions** to develop and execute **integrated water resilience strategies**
 - Action 20.1 **Build on the Integrated Regional Water Management Program** and other regional efforts to align climate scenarios and expand watershed-scale coordination and investments that contribute to water resilience. Emphasize **integrated, multi-sector, and outcome-based planning, action, and monitoring.**
- Action 27.1- Support regional decision making with watershed-scale climate vulnerability and adaptation assessments...

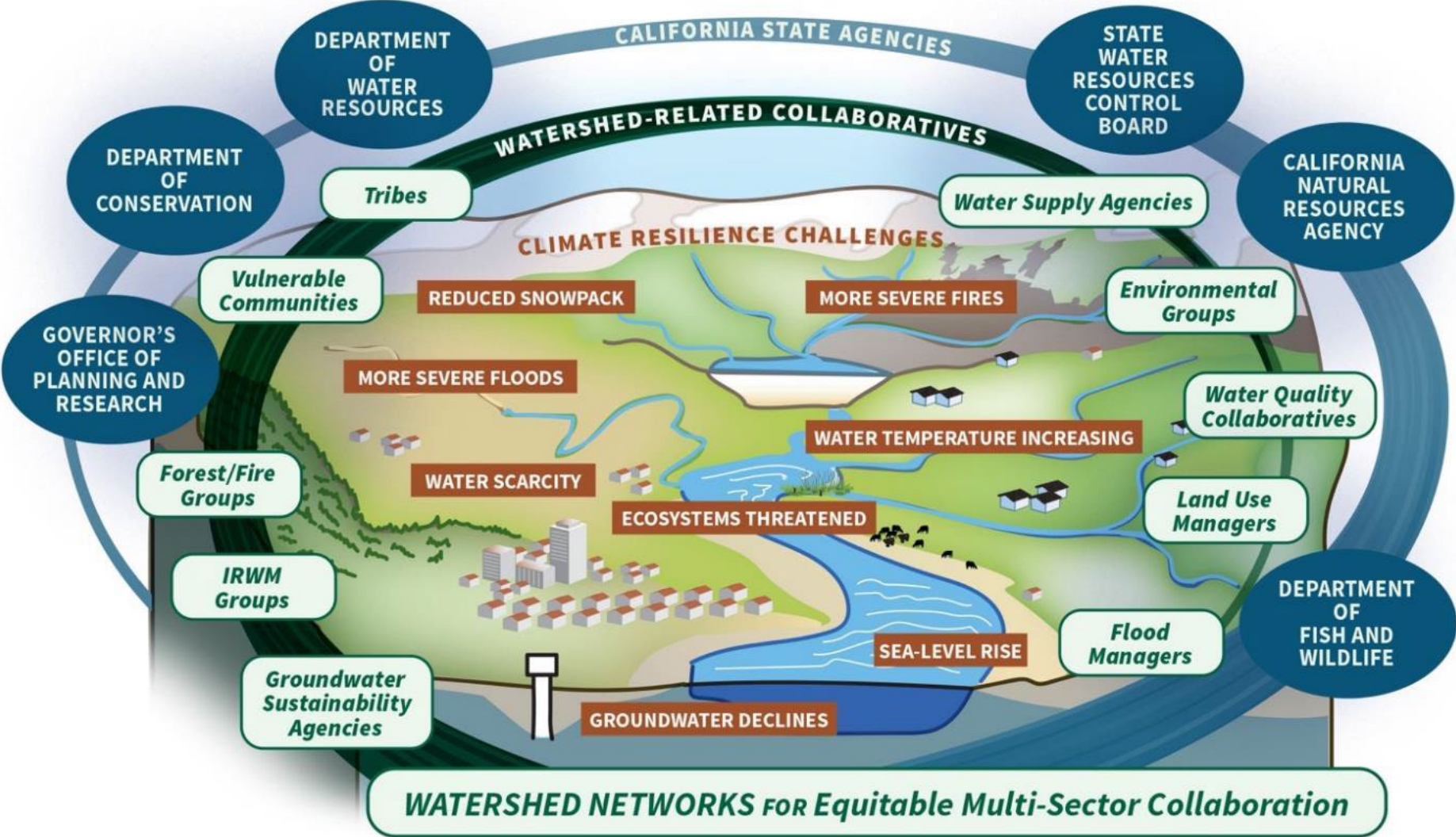


DWR is orienting our data/analytics, technical support, and outcomes tracking with a focus on watersheds.

Watershed Resilience Principles

- Promote Multi-Sectoral, Multi-Benefit Resilience Strategies
- Integrate and Prioritize Equity and Inclusiveness
- Focus on Watersheds and Interdependencies of Natural and Engineered Systems
- Build and Strengthen Watershed Networks
- Apply Best Available Science and Promote Best Practices, Approaches and Tools for Climate Resilience Planning
- Build a Robust Understanding of Climate Risks and Embrace Uncertainty
- Promote Outcomes-Based Management
- Move the Needle

Watershed Networks



Watershed Resilience Program Vision

To encourage and support locally-led watershed networks to:

- Assess and understand multi-sector climate vulnerabilities at the watershed scale
- Increase coordination across all water-related sectors
- Incorporate equity throughout the process
- Increase regional climate resilience

Legislation

- Budget Act of 2021 and 2022 provided funding for DWR to implement program
- Funding to be provided as grants for drought resilience and identification and assessment of climate risks on a watershed basis
- Funds prioritized in areas with greatest risk or potential to reduce environmental conflicts

Financial Assistance Program

In January, DWR released guidelines for current funding. Funding will be distributed via direct assistance to:

- Develop watershed-scale climate change vulnerability assessments and adaptation strategies
- Build cross sector networks
- Incorporate strong equity requirements
- Provide feedback to DWR

Pilot Projects



What are we trying to achieve with these pilot projects?

Use limited State funds to incentivize diverse, inclusive watershed networks to understand climate vulnerabilities, formulate adaptation strategies, and track outcomes to improve regional climate resilience.

Pilot projects would implement the policies described in the Water Plan and help refine a watershed resilience approach that builds off of IRWM.

Pilot Project Scope of Work Template

Task 1a: Define Watershed



Task 1b: Identify Community Participation Gaps

Task 1c: Build Inclusive Networks



Task 2: Explore Climate Hazards



Task 3: Assess Climate Vulnerabilities and Risks



Task 4: Develop and Evaluate Adaptation Strategies for Projects



Task 5: Develop Implementation Strategy



Task 6: Develop Performance Tracking Metrics



Task 7: Develop Watershed Resilience Plan

Questions?

