

# San Francisco Bay Regional Water Board Strategic Workplan Overview & North Bay Priorities

North Bay Watershed Association

March 1, 2024



Eileen White, Executive Officer



**San Francisco Bay  
Regional Water Quality  
Control Board  
Strategic Workplan**

2023

# Purpose

- Describe what we do
- Create transparency
- Communicate priorities
- Engagement and recruitment tool

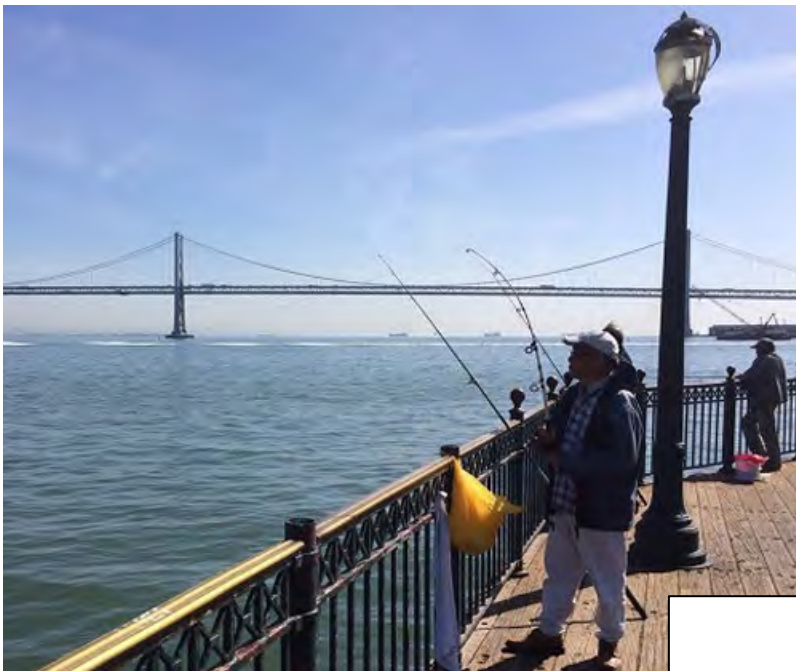




# Our Mission

To preserve, enhance, and restore the quality of the San Francisco Bay Region's water resources for the protection of the environment, public health, and all beneficial water uses





Serving the public



# Our Organizational Priorities



Climate Action



Racial Equity and Environmental Justice



Workforce Planning and Development



# What we do



PLAN & ASSESS



REGULATE



CLEAN UP



ENFORCE



# North Bay Highlights



## **PLAN & ASSESS**

Riparian & Climate Change Basin Planning Project

---

Petaluma River Pathogen TMDL Implementation

---



## **REGULATE**

Grazing Waiver Reissuance

---


Winery General Order Implementation

---

Stormwater Management

---



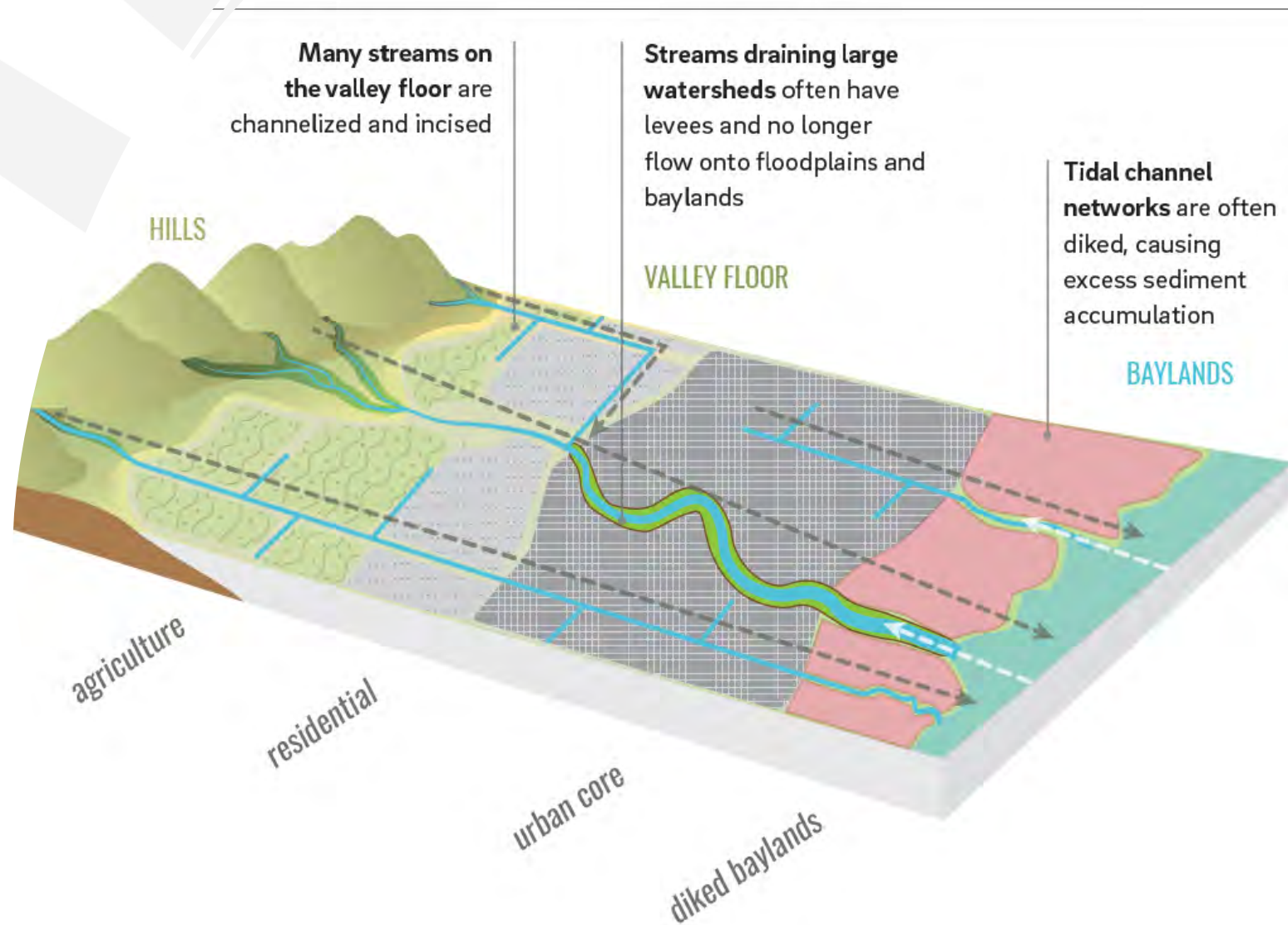


# Riparian and Climate Change Basin Planning Project



# Early Stages

- Evaluating Climate Change Effects
- Assessing Current Policies and Permits
- Petaluma River Watershed Pilot Project



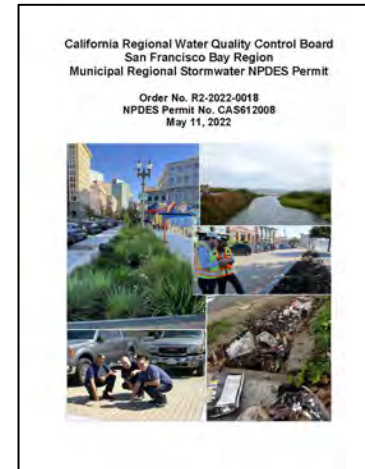
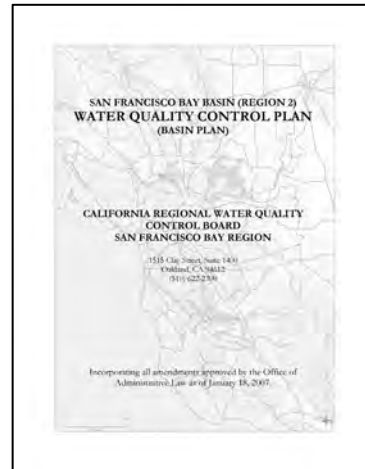
# Climate Change Effects

- Higher Frequency/Intensity of Extreme Storm Events
  - Intense flooding/scouring
- Longer and Hotter Dry Season
  - Higher water temperatures
  - Drying creeks - less vegetation, less habitat
- Higher Frequency/Intensity of Fires
  - Increased pollutant loadings

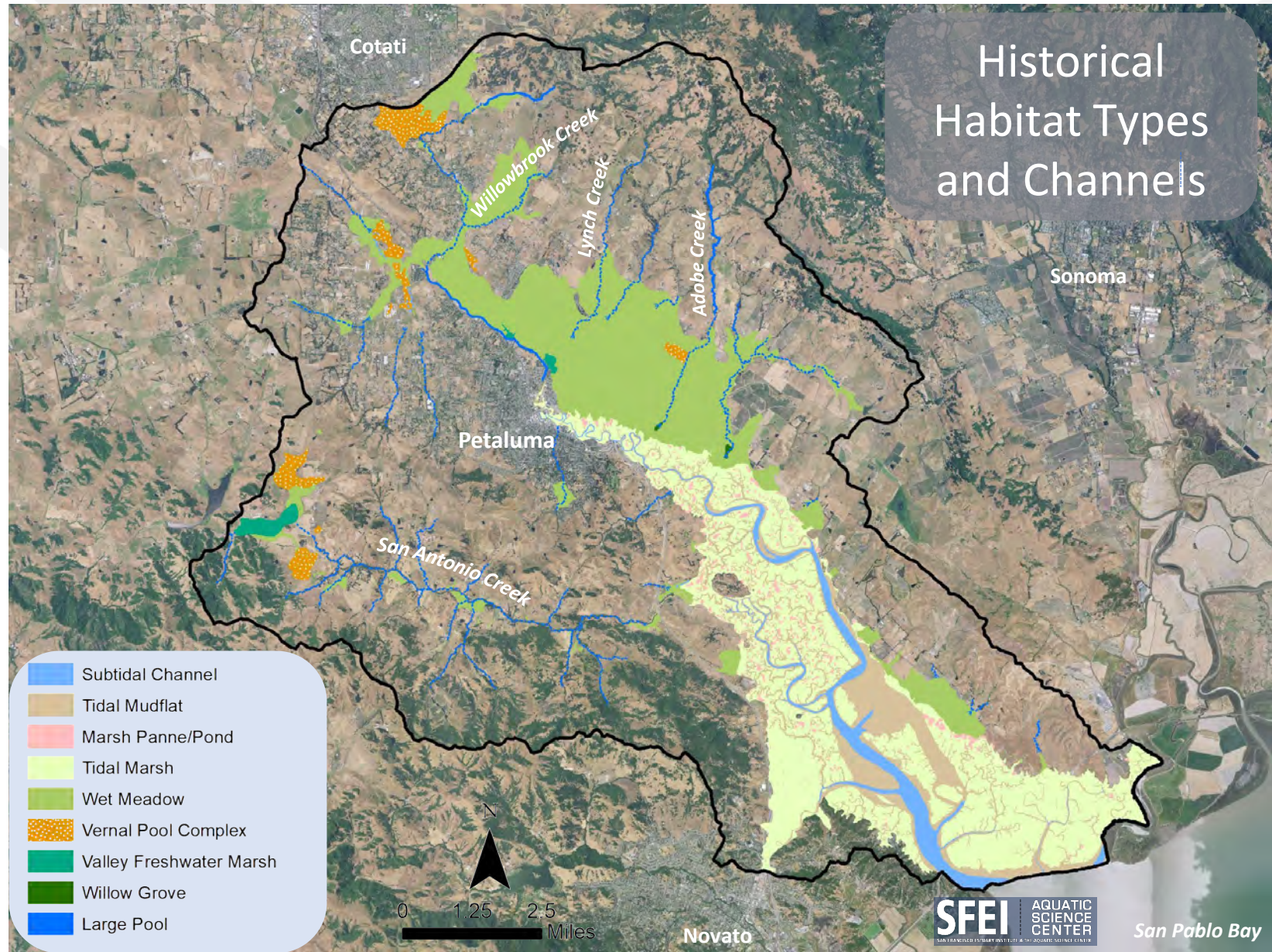


# Assessing Current Policies and Permits

- Statewide Dredge and Fill Procedures
- Water Quality Control Plan for the San Francisco Bay Basin
- Stormwater Program
- Grazing Permitting Program



# Petaluma River Pilot Project

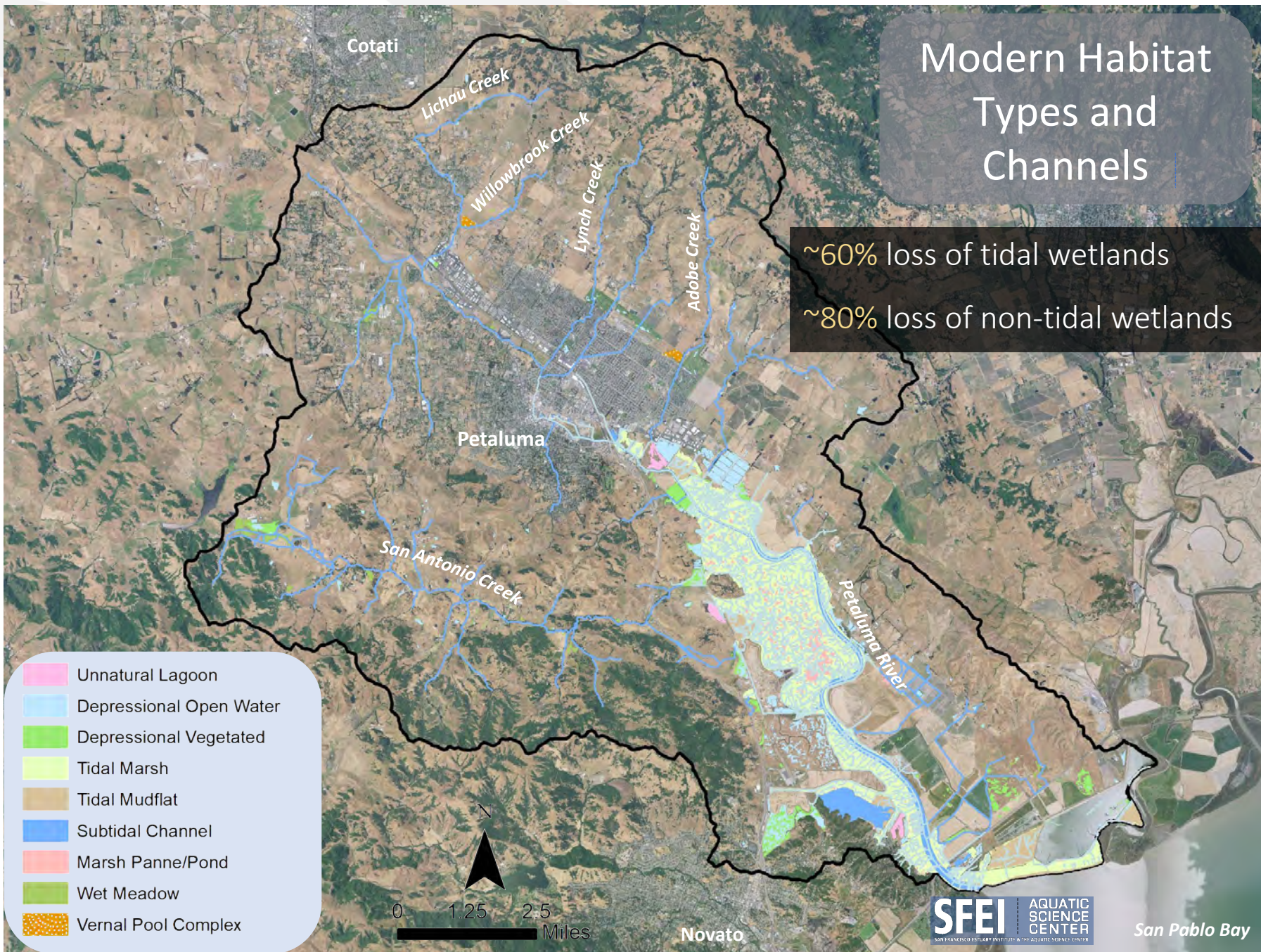




# Modern Habitat Types and Channels

~60% loss of tidal wetlands

~80% loss of non-tidal wetlands





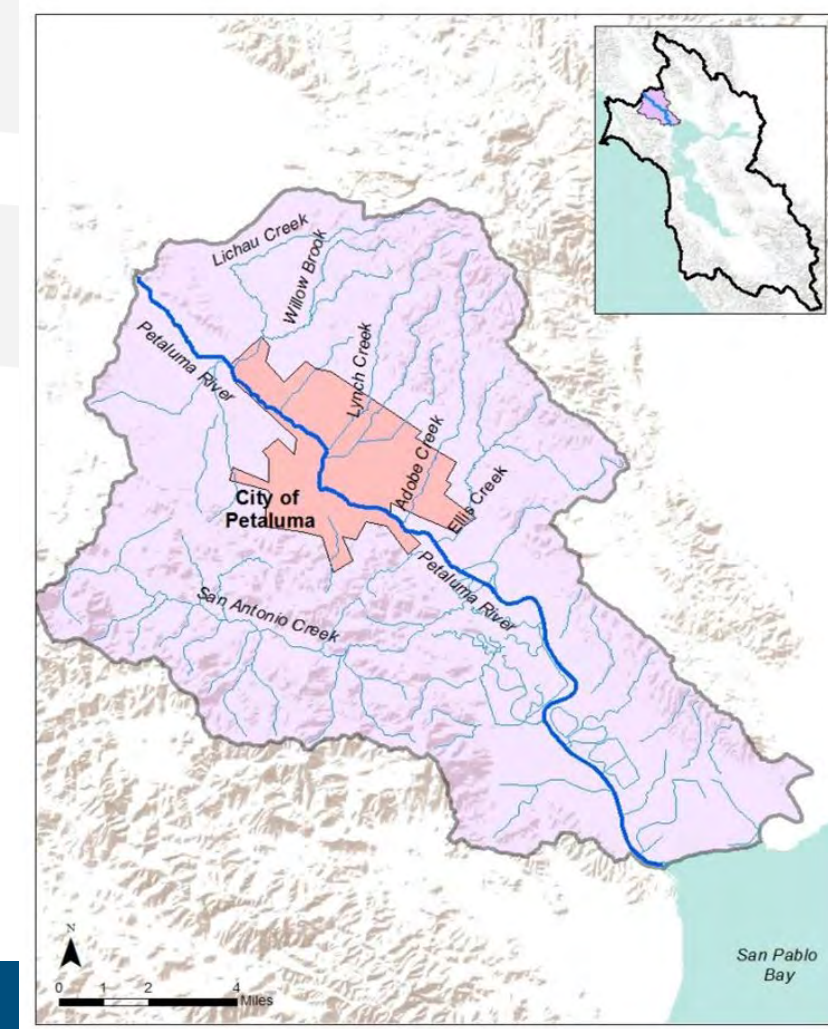


# Petaluma River Pathogen TMDL Implementation



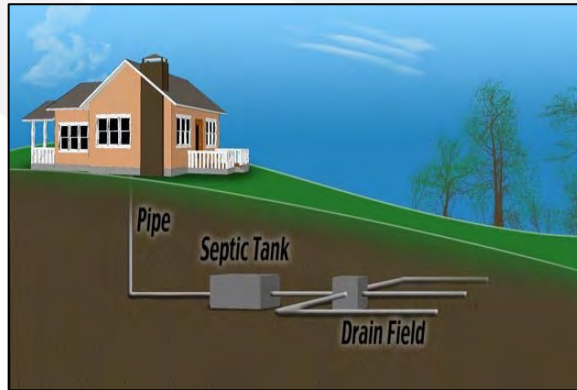
# Petaluma River Bacteria Total Maximum Daily Load (TMDL)

- Adopted by Regional Water Board on November 13, 2019
- Approved by State Water Board on June 2, 2020
- Approved by Office of Administrative Law on October 26, 2020
- Approved by U.S. EPA on May 10, 2021



# Petaluma River Bacteria TMDL Implementation Actions

- Onsite Wastewater Treatment Systems
- Stormwater
- Confined Animal Facilities
- Grazing Operations







# Grazing Permitting Program



# Grazing Permit Program

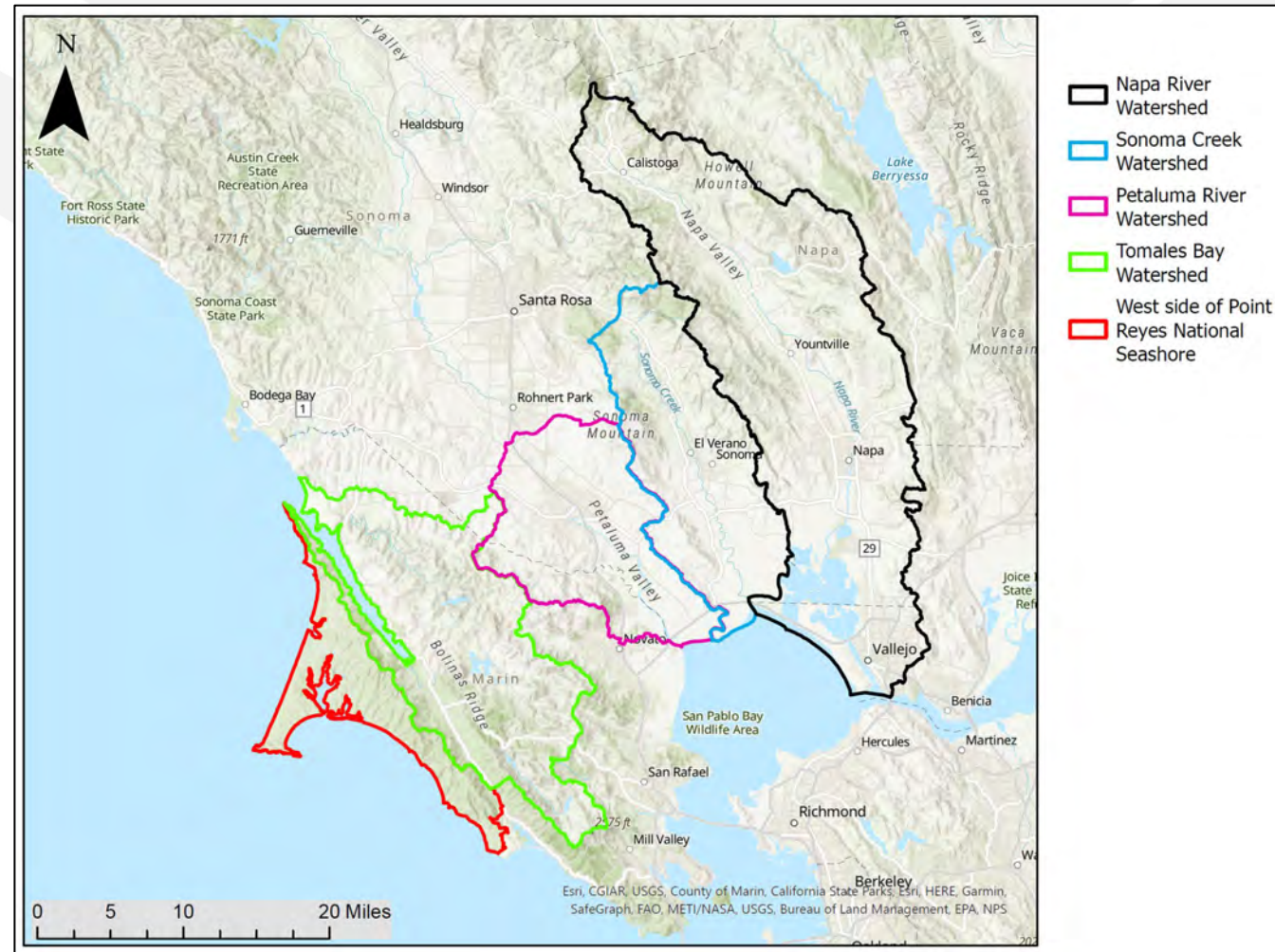
- Currently two grazing waivers
- Cover grazing operations in Tomales Bay, Sonoma Creek, and Napa River watersheds
- Initiated to implement pathogen and sediment TMDLs





# Grazing Permit Reissuance

- Combine into single permit
- Add Petaluma River watershed and watersheds in west side of Point Reyes National Seashore
- Cover grazing operations of 100 acres or more
- Propose new riparian performance standard



# Winery General Order

- Protect groundwater
- Streamline winery permitting statewide
- Provide consistent requirements
- Address constituents of concern
  - Salts
  - Nitrogen
  - Biochemical oxygen demand (BOD)

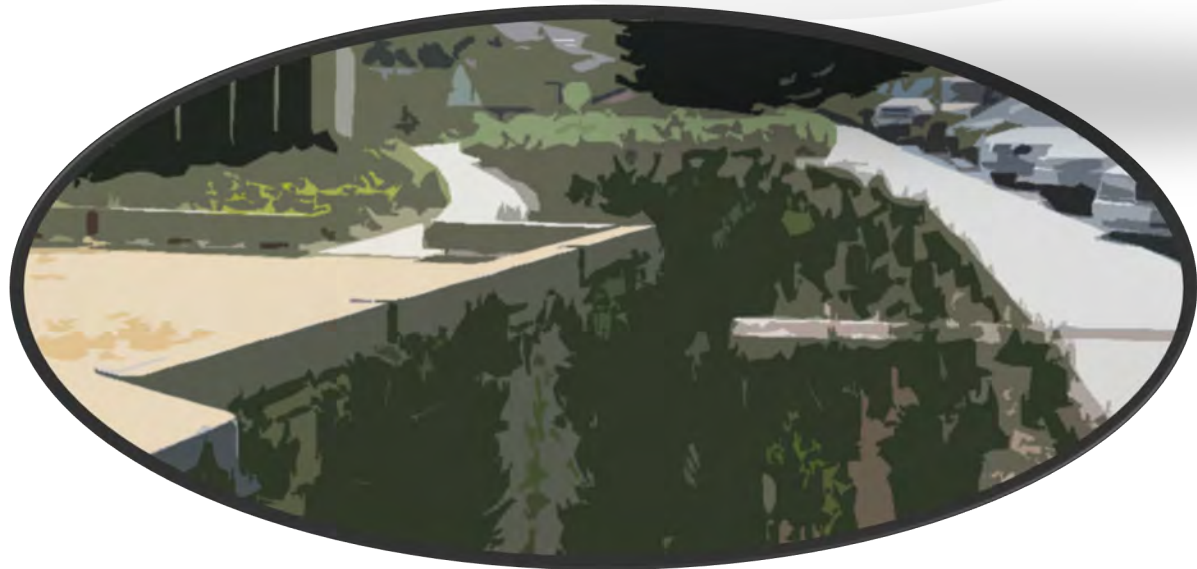




# Stormwater Permit Reissuance

Coming soon

- Trash Controls
- TMDL implementation language
- Green Infrastructure Plan



A wide, flat landscape with a narrow waterway on the left, under a hazy sky. The foreground is dominated by dense, green grasses. The waterway is a thin, dark line that curves slightly to the left. In the distance, there are some low hills or mountains under a pale, overcast sky.

# Summary

- Set priorities on bi-annually
- Track progress throughout the year
- Report outcomes annually