

The background of the slide is a satellite map of a coastal region. The map shows a large body of water on the left, with a dark blue overlay in the bottom left corner. The land is a mix of brown, tan, and green, indicating a mix of urban, agricultural, and natural areas. A prominent green waterway or estuary runs through the center of the land.

Regional Shoreline Adaptation Plan

An implementing project of **BAY ADAPT**

SB 272

Requirements for Local Government RSL Adaptation Planning

Spring 2024

No matter where you live, shoreline flooding will impact everyone in the Bay Area

What's at risk? (40-100 years)

5 million
daily highway
vehicle trips

60,000 daily
rail commuters

28,000 socially
vulnerable
residents

13,000 existing
housing units

104,000
existing jobs

20,000 acres
of depressional
wetlands,
lagoon and tidal
marsh habitat

70,000 new,
planned housing
units

85,000 new,
planned jobs

12 wastewater
treatment plants

1 According to California State Guidance, under the H++ scenario which represents the highest risk and least likely scenario, sea level rise could reach 46.8" by 2060. Under the Likely Range, or Low-Risk Aversion high-emissions scenario, 48" of sea level rise will not occur until 2120.

2/3 of California's sea level rise impacts will be felt in the Bay Area

No matter where you live,
shoreline flooding will
impact everyone in the
Bay Area

How Much **Will it Cost?**

Adaptation Needs

\$110 billion¹

Estimated cost of sea level rise adaptation through 2050² (in Year of Expenditure dollars)

- **\$52 billion:** Estimated cost for known or planned projects
- **\$54 billion:** Estimated placeholder cost for areas with adaptation needs
- **\$3 billion:** Estimated additional sediment management needs⁴

Cost of Inaction

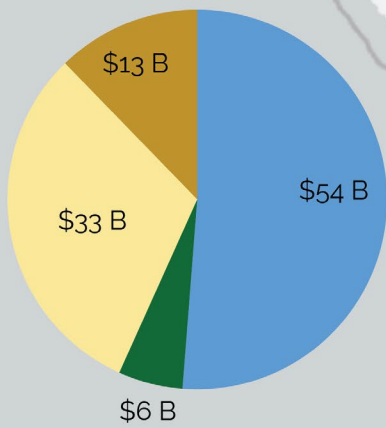
\$230+ billion³

Estimated value of a subset of assets at risk through 2050

**The cost of inaction is far higher than the cost of adaptation.
We stand to lose much more if we do not act**

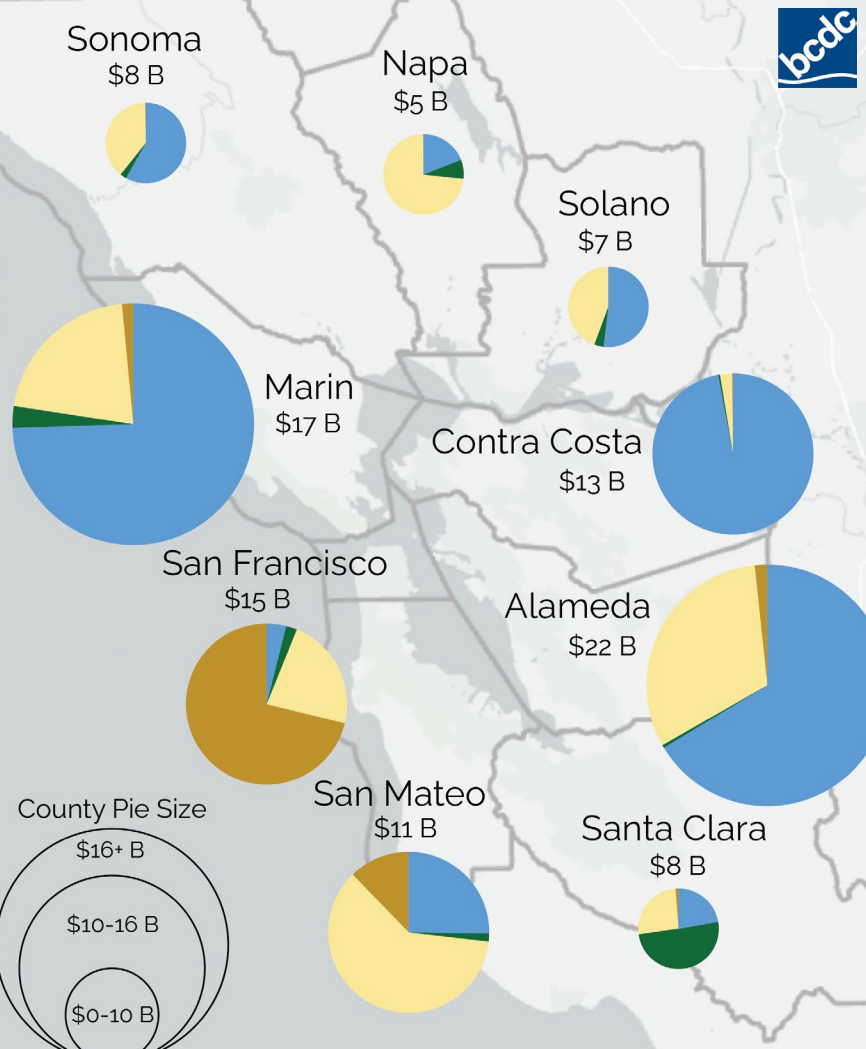
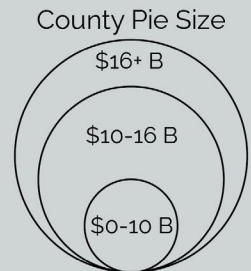
¹ In year of expenditure (YOE) dollars. ² 4.9 ft of flooding, including 1.4 ft SLR and 3.5 ft 100-yr storm ³ In 2022 dollars. ⁴ Estimate developed by BCDC and SFEI analysis.

Regional Adaptation Needs



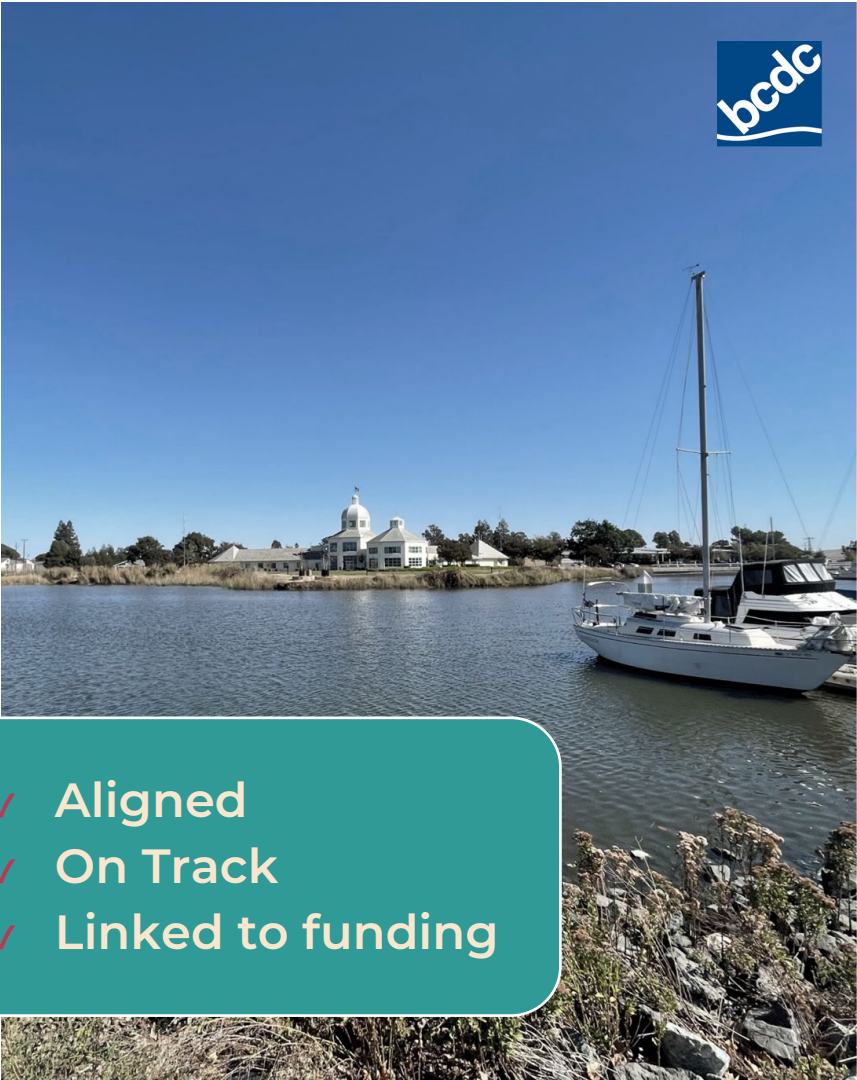
- Project Type
- Grey
 - Hybrid
 - Green
 - Placeholders

¹Values represented in Year of Expenditure dollars; Regional cost includes \$3B in additional sediment need.
²Locally identified projects do not account for studies or plans without defined interventions.



New legislation to support sea level rise adaptation (SB 272, 2023)

- Mandates local jurisdictions to develop **subregional resiliency plans** and for BCDC to develop guidelines that those plans must follow
- Requires BCDC to review - and **approve or deny** - plans based on consistency with guidelines
- **Prioritizes State funding** to create plans and for projects in approved plan jurisdictions
- Guidelines to be adopted by BCDC by **12/31/2024**

- 
- The background of the slide is a photograph of a waterfront scene. In the foreground, there is a rocky shoreline with some dry grass. A large white sailboat is docked in the water. In the background, across the water, there is a large white building with a prominent dome, likely a church or a government building. The sky is clear and blue.
- ✓ Aligned
 - ✓ On Track
 - ✓ Linked to funding

Why do we need a Regional Shoreline Adaptation Plan?

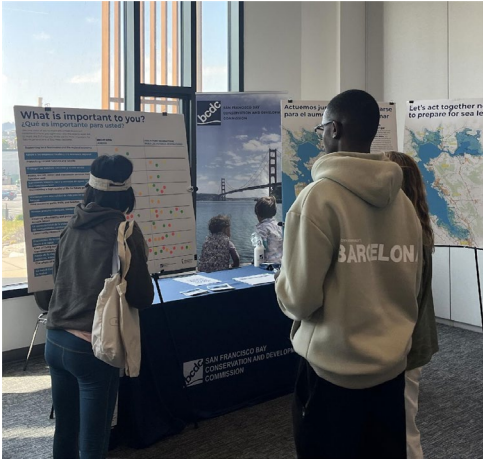
- **Coordinated** adaptation
- Priority resources to **frontline communities**
- Long-term **health of wetlands**
- **Strategic** implementation
- Common **standards and methods**
- Pipeline of **funding**
- Track and **measure progress**



**Regional Shoreline
Adaptation Plan**

An implementing project of **BAY ADAPT**

Working With And Listening To The Region



North Bay Electeds Engaged with BCDC

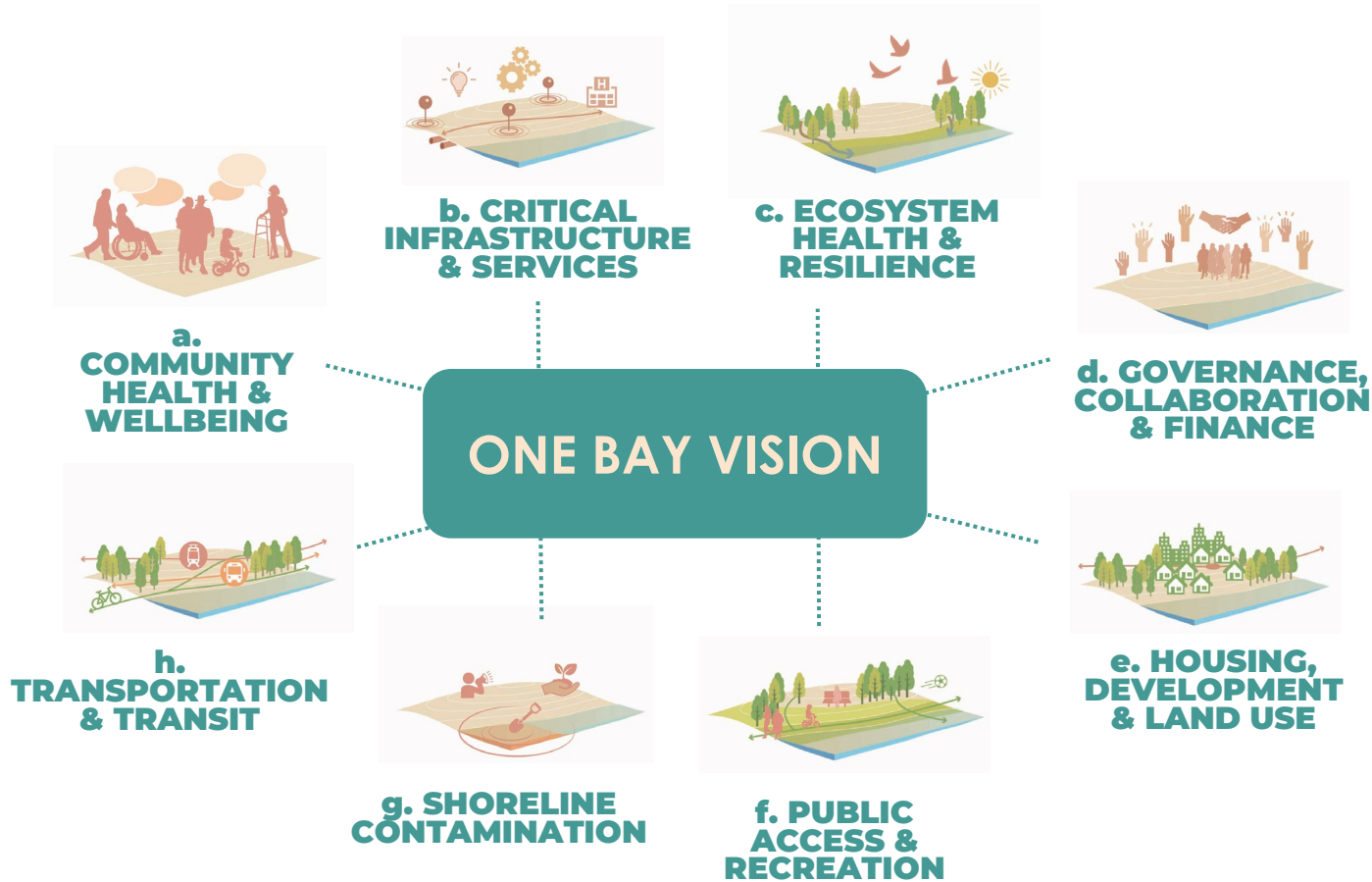
Commissioners and Alternates

- Stephanie Moulton-Peters, Marin County Board of Supervisors (Commissioner)
- Pat Eklund, City of Novato (Commissioner)
- Nancy Kemnitzer, City of Belvedere (Alternate to Eklund)
- Susan Gorin, Sonoma County (Commissioner)
- David Rabbitt, Sonoma County (Alternate to Gorin)
- Belia Ramos, Napa County (Commissioner)
- Joelle Gallagher, Napa County (Alternate to Ramos)

Local Electeds Task Force

- Janelle Kellman, City of Sausalito
- Kate Colin, City of San Rafael
- Janice Cader Thompson, City of Petaluma
- Sandra Lowe, City of Sonoma
- Ana Chretien, Napa River Reclamation District
- Mark Joseph, City of American Canyon

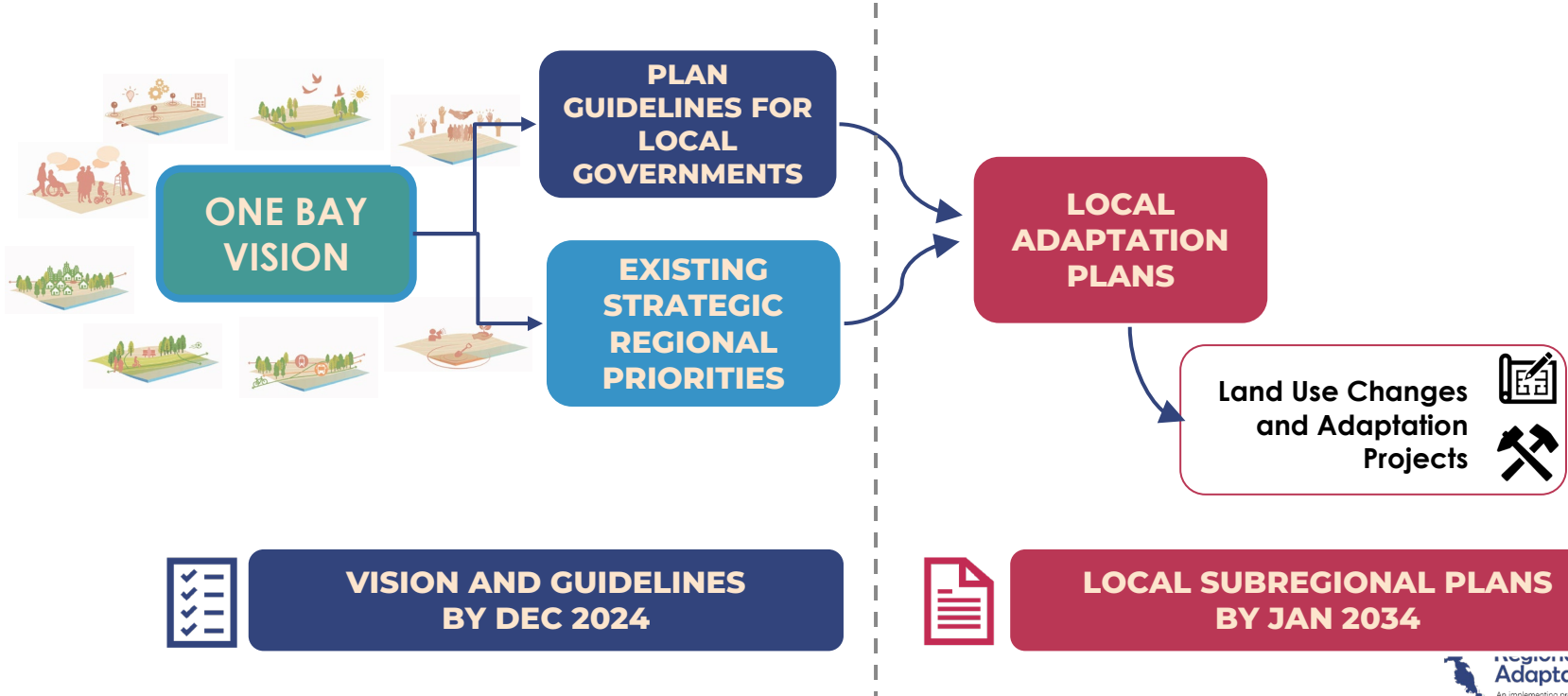
How do we start developing guidelines?



What Constitutes The Regional Shoreline Adaptation Plan?



**REGIONAL
ADAPTATION
ONLINE MAP**



**VISION AND GUIDELINES
BY DEC 2024**



**LOCAL SUBREGIONAL PLANS
BY JAN 2024**

Where are we now?

WHAT IS A SUBREGIONAL PLAN?

Possible Scale and Leads

- County Plan
- Single Jurisdiction Local Plan
- Multi-Jurisdictional Local Plan
- Combo

Plan Contents

- Vulnerability Assessment
- Adaptation Pathways
- Project List
- Land Use Plan
- Implementation Plan

Submission and Adoption

- Submit to BCDC for approval
- Local adoption
- Incorporated into local plans
- Eligible for prioritized funding for projects after adoption

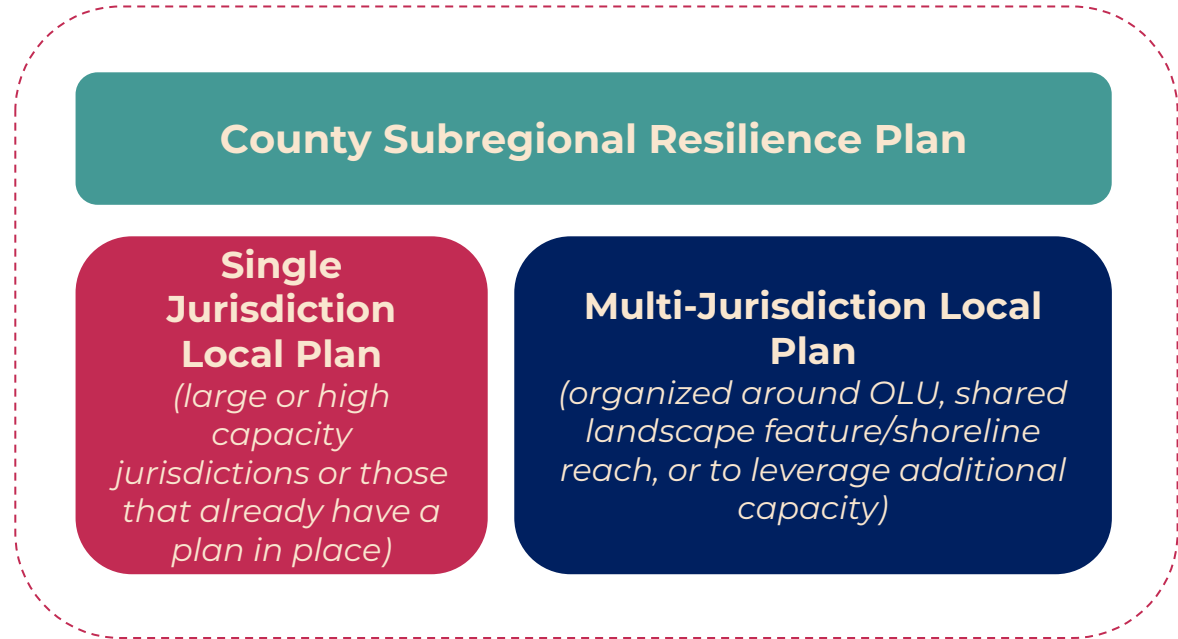
Subregional Plan Requirements Key Concepts

County Plan

- Covers unincorporated parts of the county
- Coordinates and organizes local plans

Local Plans

- Jurisdictions may submit **either** a single jurisdiction local plan or partner with their neighbors to submit a multi-jurisdiction local plan



Subregional Shoreline Resiliency Plan

Draft Guidelines Key Elements

Plan Element Guidelines

1. Element A: Overview of Planning Process
2. Element B: Existing Conditions
3. Element C: Vulnerability Assessment
4. Element D: Adaptation Strategies and Pathways
5. Element E: Project List
6. Element F: Land Use Plan
7. Element G: Implementation Plan

Minimum Standards and Considerations

1. Equitable Engagement and Participation Standards
2. Time Horizons Standards
3. Flood Hazard Standards
4. Minimum Assessment Categories
5. Vulnerability Assessment Standards
6. Adaptation Strategy Standards

How can the RSAP assist local governments?

- ✓ **Reduce uncertainty** surrounding climate change adaptation plans and projects
- ✓ Provide **needed resources** for planning and projects
- ✓ Plan in an **integrated way**
- ✓ **Prioritize** EJ communities, local and regionally-significant infrastructure, habitats, and areas most at risk into a cohesive planning process
- ✓ Require **collaboration** for multi-benefit and multi-jurisdictional adaptation projects

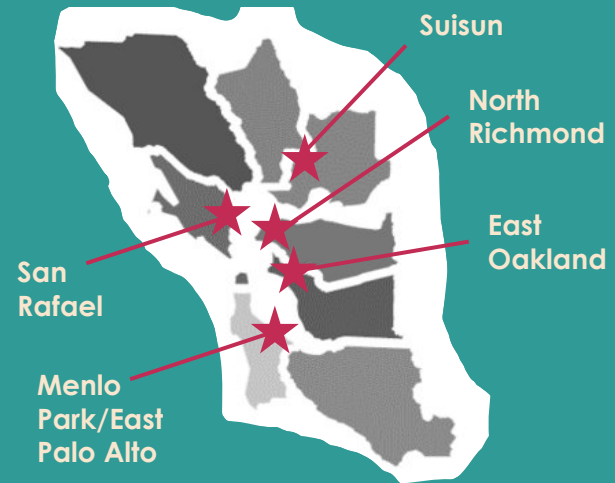


Come Join Us:

Local Workshops in May/June 2024

- Local workshops hosted **in partnership with Community-Based Organizations (CBOs)** in five vulnerable shoreline communities
- Bring together local community members **with local government** and stakeholders
- Focus on local and regional risks and opportunities to help **co-develop the new RSAP Guidelines**

Five Workshops Locations Hosted in Vulnerable Shoreline Communities



RSAP – What’s Next

- Sea Level Rise **Planning Grants available now** from Ocean Protection Council!
- **Local Electeds Task Force** meeting on May 1
- Launching a **Shoreline Leadership Academy** to build capacity for community-driven planning
- **Public review and Commission approval** of RSAP guidelines in December 2024
- **Technical and policy assistance** program to help plans get developed in 2025
- Long-term **funding strategy** – how will the region pay for this and decide what to fund first?
- **Aligning permitting** with innovative planning



Stay Involved

Learn more & sign up for our newsletter at www.bayadapt.org

Dana Brechwald

Assistant Planning Director for Climate Adaptation

Dana.brechwald@bcd.ca.gov



OCEAN
PROTECTION
COUNCIL

