



San Francisco Bay Conservation and Development Commission (BCDC)

# Accelerating Local Adaptation through the **Regional Shoreline Adaptation Plan (RSAP)**

North Bay Watershed Association | June 6, 2025

Jaclyn Perrin-Martinez, Climate Adaptation Planning Manager

[Jaclyn.perrin-martinez@bcdc.ca.gov](mailto:Jaclyn.perrin-martinez@bcdc.ca.gov)





# Agenda

- **Introduction:** Regional sea level rise challenges, SB 272, & BCDC's role
- **Subregional Plans:** Purpose of the Regional Shoreline Adaptation Plan (RSAP) and creating Subregional Plans
- **Getting Started on Plans:** BCDC's approval process and resources for support
- **Take-aways and Next Steps:** Webinars and resources coming this summer!

# Regional sea level rise risks

- **Flooding** of homes & businesses
- **Loss** of Baylands habitats
- **Damage** to infrastructure & utilities
- **Competition** for limited resources
- **Ineffective adaptation** from lack of coordinated planning
- **Economic costs** are immense\*
  - ~\$97 billion to adapt
  - \$230 billion assets at risk if no action is taken to adapt

\*Funding and Investment Framework, 2023, costs include assessed property values and select transportation infrastructure at 4.9' SLR

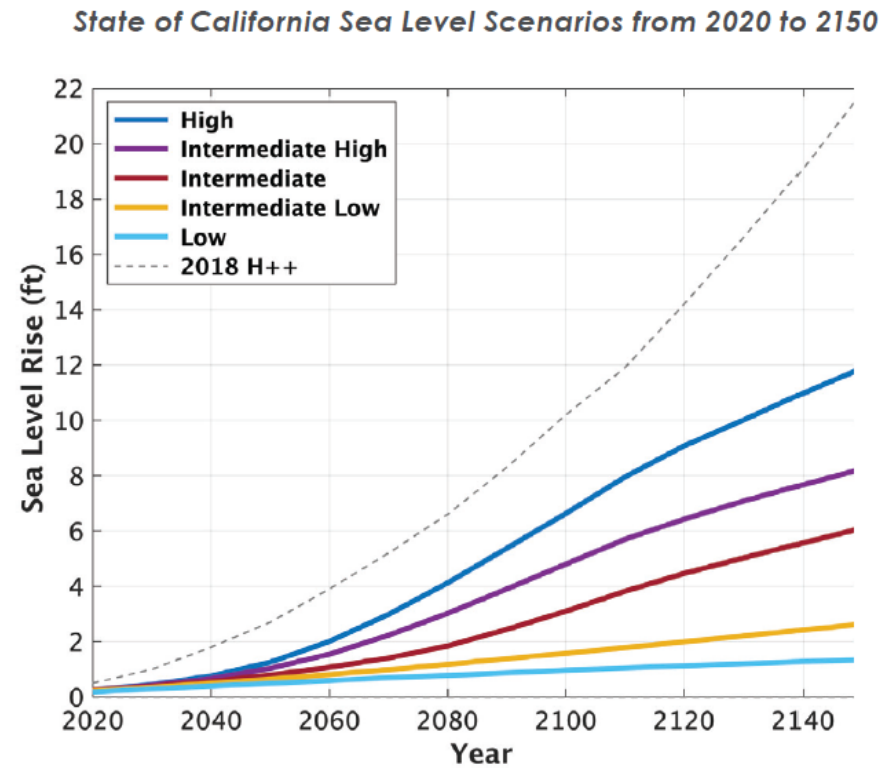
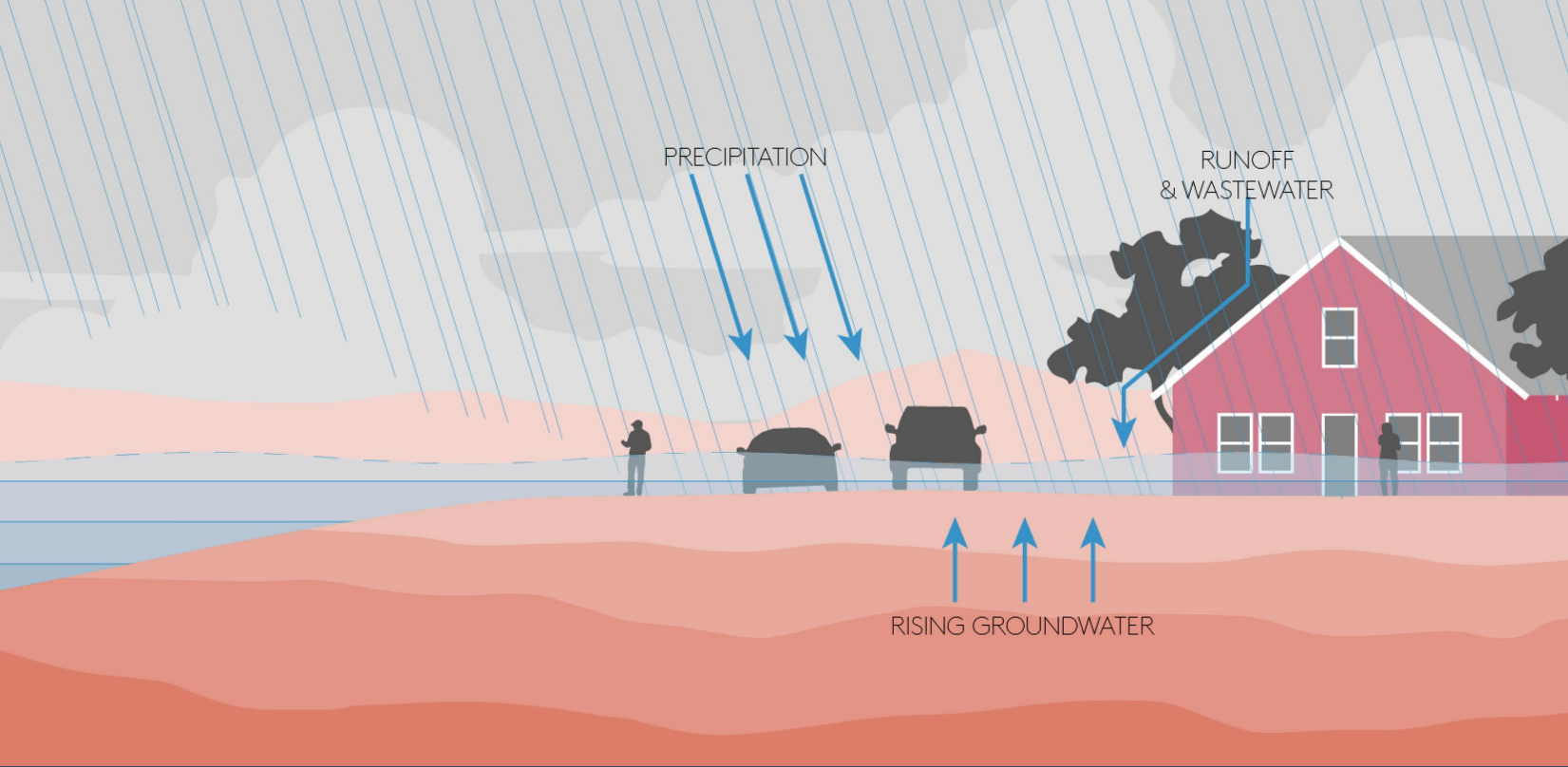
## Disproportionate risk:

**1/3** of California's coastline,  
But **2/3** of the state's economic damages from sea level rise



Regional Shoreline  
Adaptation Plan  
An implementing project of BAY ADAPT





# Sea level rise worsens flood hazards

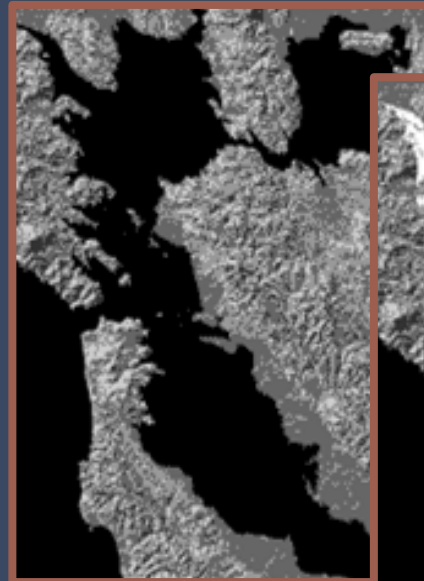
- Sea level rise is the increase in ocean (and Bay) water levels caused by climate change
- 0.8 ft is expected by 2050; 3.1 – 6.6 ft expected by 2100
- Sea level rise worsens existing hazards: high tides, storm surge, and rising groundwater

# BCDC and sea level rise

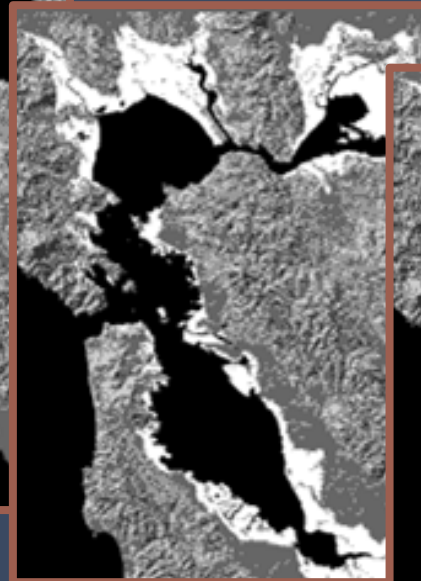


## Our Mission

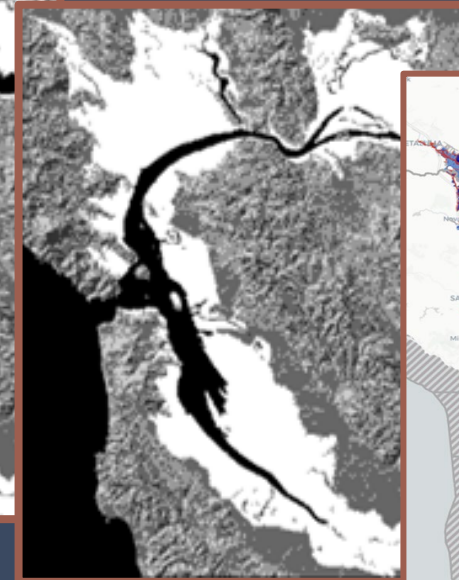
Protect and enhance San Francisco Bay and advance the Bay's responsible, productive, and equitable use for this and future generations as we face a changing climate and rising sea levels.



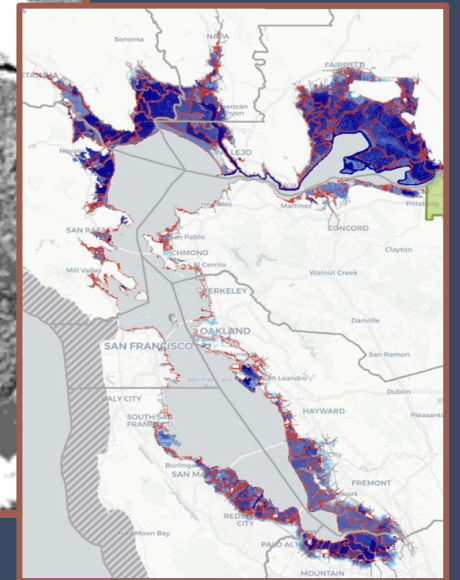
*The Bay in  
1849*



*Bay fill in  
1965*



*Estimate of  
fill that could  
be placed*



*Sea level rise  
of 6 feet by...*

# BCDC permitting and planning



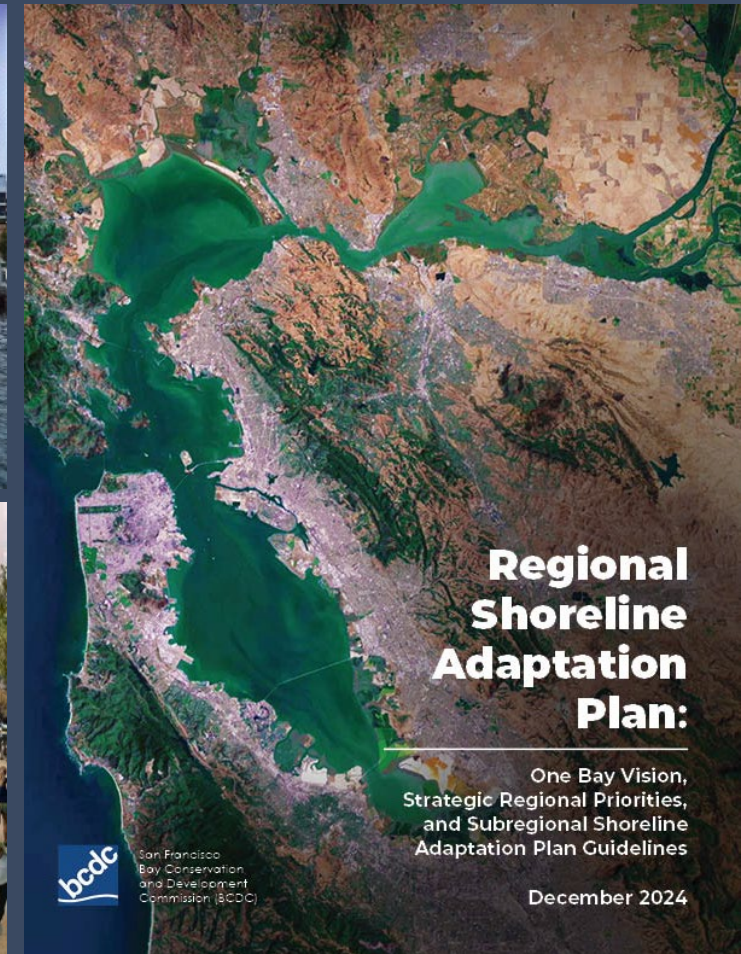
## Regulatory

- Shoreline development
- Bay resources
- Dredging and sediment

## Planning

- Long-range planning
- Local sea level rise Plans\*
- Environmental justice

*\*BCDC's new requirements under SB 272, including review and approval for Subregional Shoreline Adaptation Plans (Plans)*



# SB 272: Sea Level Rise Planning and Adaptation (Laird, 2023)\*



## For the Bay Area:

- Local governments are required to develop Subregional Shoreline Adaptation Plans (Plans) by Jan 1, 2034.
- BCDC required to create Guidelines for developing Plans → **within the Regional Shoreline Adaptation Plan**
- BCDC required to review and approve or deny Plans
- Adaptation projects in approved Plans are prioritized for State funding

*\*SB 272 is statewide legislation with requirements for local governments in the California Coastal Commission and BCDC's respective jurisdictions.*

*Coastal Commission adopted its Sea Level Rise Policy Guidance Nov 13, 2024, to incorporate SB 272 requirements for Local Coastal Programs (LCPs)*  
<https://www.coastal.ca.gov/climate/slrguidance.html>

# What is the Regional Shoreline Adaptation Plan?

A regional plan to address rising sea levels in the Bay and guides the creation of Subregional Plans

- ✓ One Bay Vision
- ✓ Strategic Regional Priorities
- ✓ Guidelines for Subregional Shoreline Adaptation Plans

## **Regional Shoreline Adaptation Plan:**

One Bay Vision,  
Strategic Regional Priorities,  
and Subregional Shoreline  
Adaptation Plan Guidelines

December 2024



San Francisco  
Bay Conservation  
and Development  
Commission (BCDC)



OCEAN  
PROTECTION  
COUNCIL



Regional Shoreline  
Adaptation Plan  
An implementing project of BAY ADAPT



# RSAP Subregional Plan Guidelines

## Plan Element Requirements

- A** Planning Process
- B** Existing Conditions
- C** Vulnerability Assessment
- D** Adaptation Strategies and Pathways
- E** Land Use and Policy Plan
- F** Project Implementation and Funding
- G** Project List

## Minimum Standards



Coastal Flood Hazards  
and Sea Level Rise  
Scenarios



Minimum Categories  
and Assets



Equity Assessment



Adaptation Strategy  
Standards

# Strategic Regional Priorities

Key **regional** challenges to be addressed **locally** in Plans to support effective outcomes for regional networks, infrastructure, values, and priorities

Reduced involuntary displacement risk

Complete and connected ecosystems

Safe and strategic growth and density

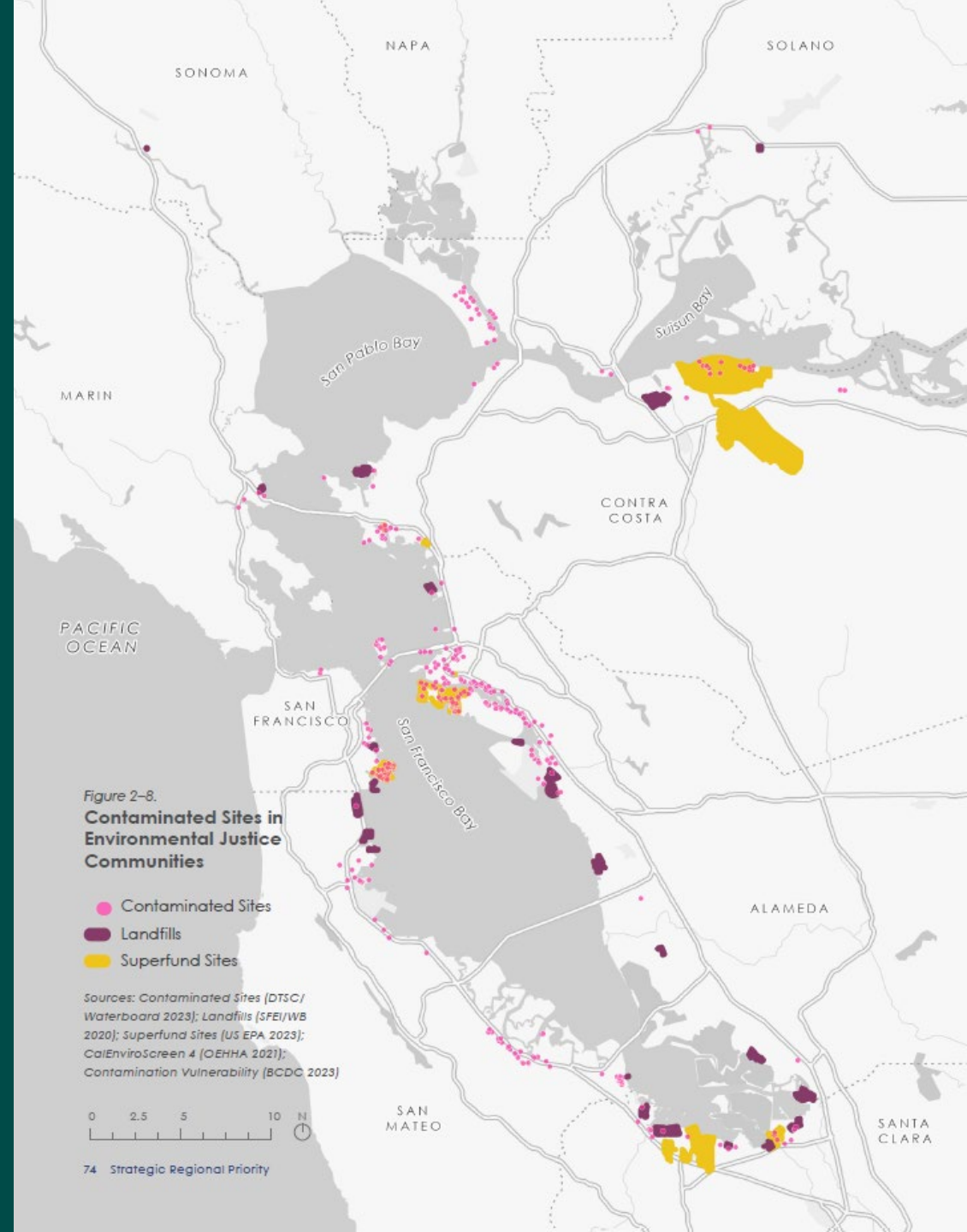
Reliable critical and emergency services

Connected regional shoreline access

Regional movement of goods and people

Clean communities to promote Environmental Justice

Cross-jurisdictional flood risk reduction



- Lots of flexibility in how to create plans with and across jurisdictions
- Build upon past and existing research and decisions at the local and regional level
- Talk to BCDC early about existing work to discuss a satisfactory approach to meeting the Plan requirements

An aerial photograph of a port facility. In the foreground, a large body of water (likely a bay or harbor) is visible. A bridge or pier structure extends into the water. To the left, a large white ship is docked at a pier. In the background, there are several industrial buildings, including a prominent one with a colorful, abstract mural. The sky is clear and blue. The overall scene depicts a busy port area with various maritime and industrial activities.

Plans should build upon  
existing efforts

# Who is required to create a Subregional Plan?

- Cities and counties within BCDC's jurisdiction
- \*Jurisdictions not in BCDC's jurisdiction but impacted by short-term coastal flood hazards and therefore likely planning partners

Counties with BCDC Jurisdiction	Cities with BCDC Jurisdiction or impacted by short-term coastal hazards	
Alameda	Alameda Albany Berkeley Emeryville Fremont	Hayward Newark Oakland San Leandro Union City
Contra Costa	Concord* El Cerrito* Hercules Martinez	Pinole Pittsburg* Pleasant Hill* Richmond
Marin	Belvedere Corte Madera Larkspur Mill Valley Novato	Ross* San Rafael Sausalito Tiburon
Napa	American Canyon	Napa*
San Francisco	San Francisco	
San Mateo	Belmont Brisbane Burlingame East Palo Alto Foster City Menlo Park	Millbrae Redwood City San Bruno* San Carlos San Mateo South San Francisco
Santa Clara	Milpitas* Mountain View Palo Alto	San Jose Santa Clara* Sunnyvale
Solano	Benicia Fairfield*	Suisun City Vallejo
Sonoma	Petaluma	

An aerial photograph of a coastal city, likely San Francisco, showing a dense urban area with a large stadium (SAP Center) and a body of water (San Francisco Bay) in the foreground. The image is used as a background for the slide.

# Subregional Plans: who's involved?

- May include a single city or county, multiple jurisdictions, or an Operational Landscape Unit (OLU)
- Encourage – but don't require – jurisdictions to create a Plan together
- Special districts and other entities should be partners and include their assets and strategies in Plans for funding
- Plans should include and connect existing efforts where possible



# Getting started on a Plan



To with neighboring jurisdictions and partners



Meet with BCDC Subregional liaisons



Explore funding opportunities

- Grants to develop SLR adaptation plans and projects
- Applications accepted on a quarterly rolling basis
- Technical Assistance for SB1

Email [OPCSB1TA@coastal-quest.org](mailto:OPCSB1TA@coastal-quest.org)



See OPC  
funding  
program  
and  
technical  
assistance  
←

ional Shoreline  
Adaptation Plan  
COASTAL-QUEST  
— BAY ADAPT



# BCDC's Plan Approval Process

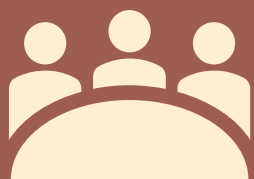
- ✓ Submit a **notice of intent** to BCDC to kick off the process.
- ✓ Hold at least **three consultations** to discuss and consult on progress.
- ✓ **Adopt Plans locally** – including for each participating jurisdiction.
- ✓ **Submit to BCDC** for review and approval with



See  
BCDC's  
website  
on **Local  
Sea Level  
Rise Plans**



# BCDC's role and resources



Consultation  
meetings



Subregional  
liaisons



Office  
hours



BCDC  
website



RSAP  
Atlas  
(coming soon)



Bay Adapt  
Currents

Photo by Karl Nielson.



Regional Shoreline  
Adaptation Plan  
An implementation project of BAY ADAPT



# The takeaways

1. Local governments have key responsibilities for sea level rise planning and should partner with special districts and their communities!
2. The RSAP lays out a path for how to create local Plans and comply with SB 272.
3. BCDC is here to help as a partner, convener, and resource for your adaptation efforts.

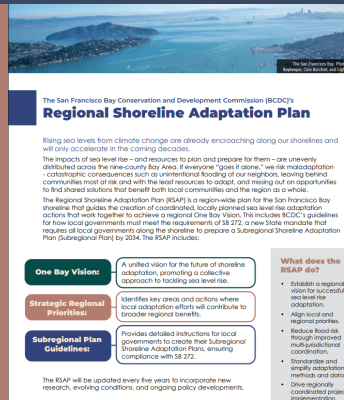


# Stay engaged with us this summer!

## 1. BCDC Website

**NEW page!**  
**Local Sea Level Rise Plans**  
[www.bcdc.ca.gov/local-sea-level-rise-plans/](http://www.bcdc.ca.gov/local-sea-level-rise-plans/)

- RSAP 2-page overview



## 2. Join our next webinar!

**June 25 1-2pm**  
**RSAP Webinar #1**  
**Series: Introducing the RSAP**  
Register to attend →



## 3. Meet your BCDC liaison. [www.bcdc.ca.gov/local-sea-level-rise-plans/required-jurisdictions-and-their-subregional-liaisons/](http://www.bcdc.ca.gov/local-sea-level-rise-plans/required-jurisdictions-and-their-subregional-liaisons/)



**Jackie Perrin-Martinez**  
Climate Adaptation Planning Manager  
[jaclyn.perrin-martinez@bcdc.ca.gov](mailto:jaclyn.perrin-martinez@bcdc.ca.gov)  
(415) 352-3631



**Danielle Flanagan**  
Climate Adaptation Planning Specialist  
[Danielle.Flanagan@bcdc.ca.gov](mailto:Danielle.Flanagan@bcdc.ca.gov)  
(415) 352-3646